

MICHIGAN
DEPARTMENT OF CONSERVATION
FORESTRY DIVISION

LAND CORNER RECORD

T. 43 N.R. 7 W

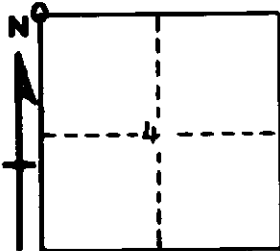
Mackinac COUNTY

DESCRIPTION OF CORNER Closing Corner for Sections 4 and 5 on North Boundary of Township

CORNER MONUMENT 1" Pipe with 4" Brass Cap

DATE MONUMENT PLACED AND WITNESSED 6/21/61

WITNESSES TO CORNER... 5" Cedar (CC S 5 NBT) S 57° W 19 Links



CIRCLE CORNER REGISTERED

AND

DESCRIPTION IN DETAIL AS TO HOW CORNER WAS LOCATED AND IDENTIFIED OR RESTORED.

This corner was replaced at Cedar Post set by Marcus Schaaf, Registered Land Surveyor, from two Tamarack B.T.'s bearing S 47° E, 17 Links and S 6° W, 14 Links. Both B.T.'s still in place in fair condition. Note: This corner lies 16 Links West of Section Corner for 32 and 33, T44N, R7W.

SURVEYOR'S SEAL

SIGNED Billy D. Buckler DATE July 26, 1961
REGISTERED LAND SURVEYOR
Billy D. Buckler