

MICHIGAN
DEPARTMENT OF CONSERVATION
FORESTRY DIVISION

LAND CORNER RECORD

T. 43 N.R. 7 W.

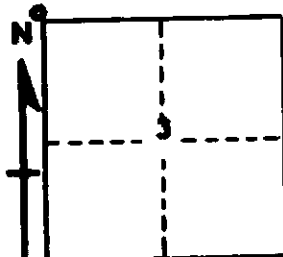
Mackinac COUNTY

DESCRIPTION OF CORNER Closing Corner between Sections 3-4 on North Boundary of Township

CORNER MONUMENT 1/2" x 14" Iron Nail buried on South edge of E-W Road D.N.R. Monu

DATE MONUMENT PLACED AND WITNESSED 9/25/63

WITNESSES TO CORNER..... Iron Fence Post E. 45° E., 74 1/2 Lks.



CIRCLE CORNER REGISTERED

12" R. PINE S 54° E 94.4'

AND

DESCRIPTION IN DETAIL AS TO HOW CORNER WAS LOCATED AND IDENTIFIED OR RESTORED.

This Corner was placed 46 Links West of Section Corner between 33-34, T. 44 N., R. 7 W.

Corner lies 36 Lks. West of Road ^CE to South.

SURVEYOR'S SEAL

SIGNED _____

REGISTERED LAND SURVEYOR

DATE _____