

LAND CORNER RECORDATION CERTIFICATE
Filing Requirement of Act 74, Mich. P.A. 1970

For corners in
Mackinac

(County)

Located In:

Corner Code #

1. Public Land Survey	T <u>43N</u> R <u>7W</u>	<u>18</u>
	T <u> </u> R <u> </u>	<u> </u>
	T <u> </u> R <u> </u>	<u> </u>
	T <u> </u> R <u> </u>	<u> </u>
2. Property Controlling in Section	S <u>23</u> T <u>43N</u> R <u>7W</u>	<u>7</u>
	S <u> </u> T <u> </u> R <u> </u>	<u> </u>
3. Miscellaneous Property in Sec.	S <u> </u> T <u> </u> R <u> </u>	<u> </u>
	S <u> </u> T <u> </u> R <u> </u>	<u> </u>

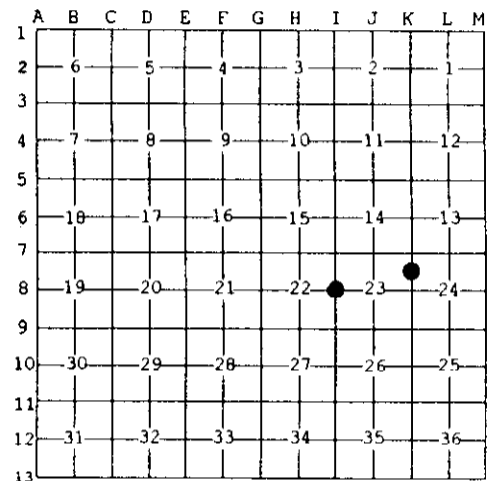
Register of Deeds Stamp & File Number

4. Lot No. _____, Recorded Plat _____
 5. Private Claims _____

Mar 23 2004

I, Stephan J. Szyszkoski, in a field survey on _____, 19____ do hereby state that under requirements of P.A. 74, Michigan P.A. of 1970, the corner points mentioned in lines 1 and 2 above were in conformance with regulations and rules therefore as required in the current manual of survey instructions of the United States Department of the Interior, Bureau of Land Management or by a decree of a Court of Law and /or that the corner points mentioned in lines 3, 4 and 5 above were in conformance with the rules of the Michigan Board of Land Surveyors or by a Decree of a Court of Law; established, re-established, monumented, recovered, found as expressed below:

NOTE: Not more than 2 corners, all in the same town and range, may be recorded on this certificate.



A. Description of original monument and accessories and/or subsequent restoration:

(18) Quarter corner common to Sections 22-23. Reestablished in 1966 by F.J.Bray, RLS, midway between Section corners. Set 1" iron pipe with 4" aluminum cap. 9" H.Maple N09W 12.5 links, 12" H.Maple S56W 21.5 links, 7" Beech S34E 17.5 links.
 (7-Sec. 23) North 1/16 corner between Sections 23-24. Established in 1966 by F.J.Bray, RLS, midway between Section and Quarter corners. Set 1" iron pipe with 4" aluminum cap. 9" Cedar N52W 19 links, 8" Cedar N55E 26.5 links.

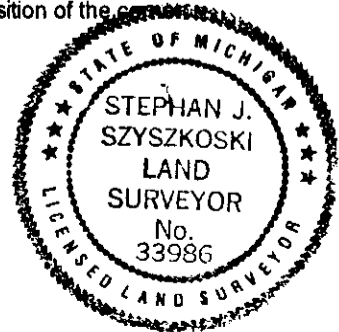
B. Description of corner evidence found and/or method applied in restoring or reestablishing corner:

(18) Recovered the 1966 monument (cap is broken) at record bearing and distance from the two remaining N8Ts: H.Maple SW and Beech. the H.Maple NW is gone. I used this monument to control a subdivision of Section 23 this date.
 (7-Sec. 23) Recovered the 1966 monument, in position but leaning. Plumbed the monument to be in accord with the 1966 witnesses, the Cedar NW in good condition, and the Cedar NE standing dead. I used this monument to control a subdivision of Section 23 this date.

C. Description of monument for corner and accessories established to perpetuate locating the position of the corner:

(18) Found 1" ID I.pipe with broken alum. cap. Blazed, scribed, and set measuring nails in:	"1/4S N8T"	(7) Found 1" ID Iron pipe with 4" alum. MDNR cap. Blazed, scribed, and set measuring nails in:	"N1/16 BT"
12" Maple N54W 19.3'	do	6" Cedar S21E 7.3'	do
9" Maple N05E 34.25'	do	5" Cedar S47W 12.45'	do
the 1966 N8Ts:		7" Cedar S79W 6.5'	do
10" Beech S28E 11.8'	"1/4S"	the 1966 BT:	
14" Maple S59W 14.95'	do	11" Cedar N44W 13.45'	"N1/16"

Bearings are magnetic. Distances are to nail with tag.



Signed by Stephan J. Szyszkoski
 Surveyor's Michigan License No. 33986

Date 4/6/04