

LAND CORNER RECORDATION CERTIFICATE
Filing Requirement of Act 74, Mich. P.A. 1970

For corners in
Mackinac

_____	Located in:	Corner Code #
(County)		
1. Public Land Survey	T 43N R 7W	J8
	T _____ R _____	_____
	T _____ R _____	_____
	T _____ R _____	_____
2. Property Controlling in Section	S 23 T 43N R 7W	5
	S _____ T _____ R _____	_____
3. Miscellaneous Property in Sec.	S _____ T _____ R _____	_____
	S _____ T _____ R _____	_____

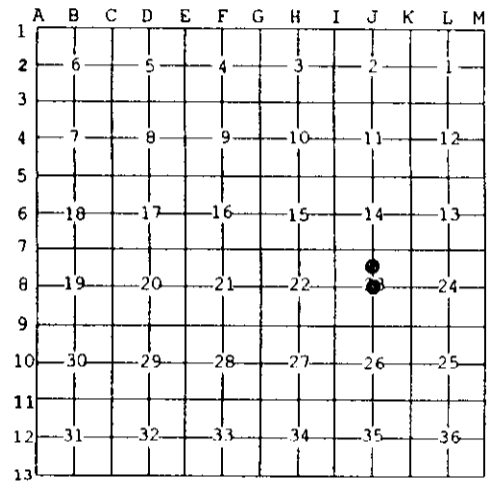
Register of Deeds Stamp & File Number

4. Lot No. _____, Recorded Plat _____
5. Private Claims _____

Mar 11 2004

I, Stephan J. Szyszkoski, in a field survey on _____, 19____ do hereby state that under requirements of P.A. 74, Michigan P.A. of 1970, the corner points mentioned in lines 1 and 2 above were in conformance with regulations and rules therefore as required in the current manual of survey instructions of the United States Department of the Interior, Bureau of Land Management or by a decree of a Court of Law and /or that the corner points mentioned in lines 3, 4 and 5 above were in conformance with the rules of the Michigan Board of Land Surveyors or by a Decree of a Court of Law; established, re-established, monumented, recovered, found as expressed below:

NOTE: Not more than 2 corners, all in the same town and range, may be recorded on this certificate.



A. Description of original monument and accessories and/or subsequent restoration:
(J8) Center of Section 23. Not established in the original survey.
(5-Sec. 23) North 1/16 corner, Section 23. Not established in the original survey.

B. Description of corner evidence found and/or method applied in restoring or reestablishing corner:
(J8) Established the corner at the intersection of straight lines connecting opposite 1/4 corners.
(5-Sec. 23) Established the corner midway and on a straight line between 1/4 corner 1326.16' north and Center of Section 1326.16' south.

C. Description of monument for corner and accessories established to perpetuate locating the position of the corner:

(J8) Set 1"IDx36" I.pipe with 4" dia. alum. MDNR cap. Blazed, scribed, and set measuring nails in:	(5) Set 1"IDx36" I.pipe with 4" alum. MDNR cap. Blazed, scribed, and set measuring nails in:
20" Hemlock N05W 24.8' CS BT	8" Cedar S65W 22.4' N1/16 BT
16" Spruce S87E 13.25' do	6" Cedar N67W 19.95' do
5" Maple S40E 9.8' do	6" Cedar N39W 13.35' do
14" Cedar S83W 12.45' do	5" Cedar N17E 30.8' do
Bearings are magnetic. Distances are to nail with tag.	Bearings are magnetic. Distances are to nail with tag.



Signed by Stephan J. Szyszkoski
Surveyor's Michigan License No. 33986

Date 4/6/04