

MICHIGAN
DEPARTMENT OF CONSERVATION
FORESTRY DIVISION

LAND CORNER RECORD

T. 43 N.R. 8W

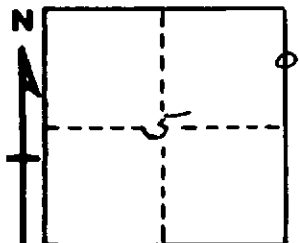
Mackinac COUNTY

DESCRIPTION OF CORNER North 1/16 Corner between sections 4-5

CORNER MONUMENT 1" Iron pipe, buried in road.

DATE MONUMENT PLACED AND WITNESSED 5/8/68

WITNESSES TO CORNER..... 12" Jack Pine (NBT) S53°E 73.0'



CIRCLE CORNER REGISTERED

AND

DESCRIPTION IN DETAIL AS TO HOW CORNER WAS LOCATED AND IDENTIFIED OR RESTORED.

This corner re-witnessed as recorded by D. A. Brotherton,
R.L.S., 1917.

Found, 1" Iron Pipe buried 6.0' East of road intersection.
Corner lies 33.0' East of N.-S. fenceline and equidistant
between fence lines to west, which are 66.0' apart.

SURVEYOR'S SEAL

SIGNED Billy D. Buckler
Billy D. Buckler, R.L.S. DATE 9/25/68
REGISTERED LAND SURVEYOR