

MICHIGAN
DEPARTMENT OF CONSERVATION
FORESTRY DIVISION

LAND CORNER RECORD

T. 43 N.R. 8W

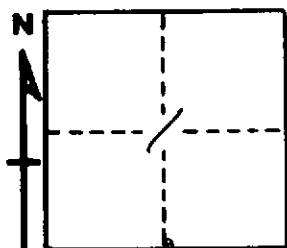
Mackinac COUNTY

DESCRIPTION OF CORNER 1/2 Corner between Secs. 1-12

CORNER MONUMENT 1" Pipe with 4" Aluminum Cap, buried in Road

DATE MONUMENT PLACED AND WITNESSED 6-4-68

WITNESSES TO CORNER..... 6" Hard Maple (1/2S NBT) S16°W 13.7'



6" Hard Maple (1/2S NBT) N19°W 19.7'

AND

CIRCLE CORNER REGISTERED

DESCRIPTION IN DETAIL AS TO HOW CORNER WAS LOCATED AND IDENTIFIED OR RESTORED.

This corner re-established midway between two Sec. Corners and in East-West Road.

No evidence of original corner.

SURVEYOR'S SEAL

SIGNED *Billy D. Buckler*
Billy D. Buckler, R.L.S. DATE 10-8-68
REGISTERED LAND SURVEYOR