

LAND CORNER RECORDATION CERTIFICATE
Filing Requirement of Act 74, Mich. P.A. 1970

For corners in

Mackinac

(County)

Located In:

Corner Code #

1. Public Land Survey

T 43N R 8W F5

T _____ R _____

T _____ R _____

T _____ R _____

2. Property Controlling in Section

S 16 T 43N R 8W 2

S _____ T _____ R _____

3. Miscellaneous Property in Sec.

S _____ T _____ R _____

S _____ T _____ R _____

Register of Deeds Stamp & File Number

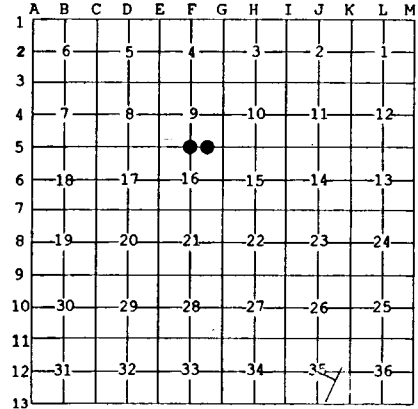
4. Lot No. _____, Recorded Plat _____

5. Private Claims _____

Jul 07 1999

I, Stephan J. Szyszkoski, in a field survey on _____, 19____ do hereby state that under requirements of P.A. 74, Michigan P.A. of 1970, the corner points mentioned in lines 1 and 2 above were in conformance with regulations and rules therefore as required in the current manual of survey instructions of the United States Department of the Interior, Bureau of Land Management or by a decree of a Court of Law and/or that the corner points mentioned in lines 3, 4 and 5 above were in conformance with the rules of the Michigan Board of Land Surveyors or by a Decree of a Court of Law; established, re-established, monumented, recovered, found as expressed below:

NOTE: Not more than 2 corners, all in the same town and range, may be recorded on this certificate.



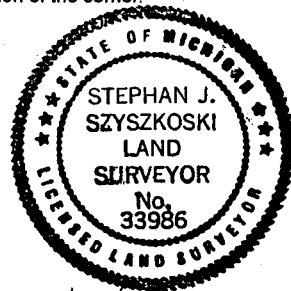
A. Description of original monument and accessories and/or subsequent restoration:
 (F5) Quarter corner common to Sections 9-16. Established in 1845 by H.Brevoort: "West corrected between Secs. 9&16...40.205 Set quarter section post. Maple 4 N86E 13, Birch 14 N2W 31 ...80.41 Section corner".
 (2-Sec. 16) East 1/16 corner between Sections 9-16. Corner not established in the original survey.

B. Description of corner evidence found and/or method applied in restoring or reestablishing corner:

(F5) The original post and accessories were not recovered. Found no acceptable evidence of the position of the original corner on the ground. I note that the mile measures 78.362 chains, 2.048 chains shorter than the record. I consider the original corner lost and reestablish same midway and on a line of mean true bearing between the section corners east and west. At the position for the corner, I place a 1" ID x 36" iron pipe capped with a 4" dia. cast aluminum MDNR tablet, appropriately stamped.
 (2-Sec. 16) Established the corner midway and on a line of mean true bearing between Quarter corner 1292.98' West and Section corner 1292.98' East. Placed a 1" ID x 36" iron pipe capped with a 4" dia. cast aluminum MDNR tablet, appropriately stamped, at the corner.

C. Description of monument for corner and accessories established to perpetuate locating the position of the corner:

(F5) Set 1" pipe with 4" MDNR cap.	(2) Set 1" pipe with 4" MDNR cap.
Blazed, scribed, and set measuring nails in the following:	Blazed, scribed, and set measuring nails in the following:
10" Spruce N38W 9.45' "1/4S N8T"	6" Balsam S74W 11.0' "E1/16 BT"
14" Spruce S53W 15.6' do	5" Balsam M62E 8.1' do
10" Spruce S10W 9.25' do	5" Cherry (clump) S62E 12.65' do
10" Spruce S24E 10.25' do	6" Balsam S39W 8.3' do
Placed a 4" cedar post adjacent.	Placed a 4" cedar post adjacent.
Bearings are magnetic. Distances are to nail with tag.	Bearings are magnetic. Distances to nail with tag.



Signed by Stephan J. Szyszkoski
 Surveyor's Michigan License No. 33986

Date 8/29/00

For the Michigan Department of Natural Resources - Forest Management Division