

LAND CORNER RECORDATION CERTIFICATE
Filing Requirement of Act 74, Mich. P.A. 1970

For corners in

Mackinac

(County)

Located In:

Corner Code #

1. Public Land Survey	T <u>43N</u> R <u>8W</u>	<u>C5</u>
	T <u> </u> R <u> </u>	<u> </u>
	T <u> </u> R <u> </u>	<u> </u>
	T <u> </u> R <u> </u>	<u> </u>
2. Property Controlling in Section	S <u>7</u> T <u>43N</u> R <u>8W</u>	<u>11</u>
	S <u> </u> T <u> </u> R <u> </u>	<u> </u>
3. Miscellaneous Property in Sec.	S <u> </u> T <u> </u> R <u> </u>	<u> </u>
	S <u> </u> T <u> </u> R <u> </u>	<u> </u>

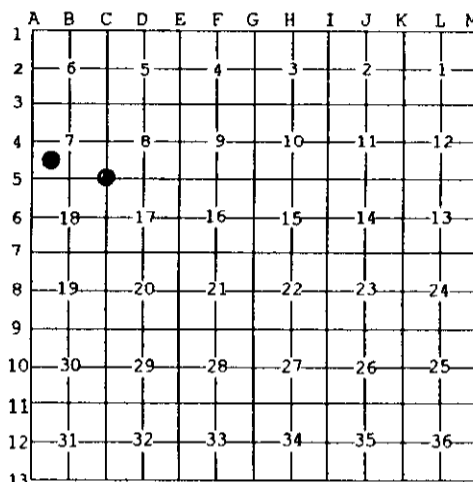
Register of Deeds Stamp & File Number

4. Lot No. _____, Recorded Plat _____
 5. Private Claims _____

11 Oct 19 2004
 C5 Oct 20 2004

I, Stephan J. Szyszkoski, in a field survey on _____, 19____ do hereby state that under requirements of P.A. 74, Michigan P.A. of 1970, the corner points mentioned in lines 1 and 2 above were in conformance with regulations and rules therefore as required in the current manual of survey instructions of the United States Department of the Interior, Bureau of Land Management or by a decree of a Court of Law and /or that the corner points mentioned in lines 3, 4 and 5 above were in conformance with the rules of the Michigan Board of Land Surveyors or by a Decree of a Court of Law; established, re-established, monumented, recovered, found as expressed below:

NOTE: Not more than 2 corners, all in the same town and range, may be recorded on this certificate.



A. Description of original monument and accessories and/or subsequent restoration:
 (C5) Corner common to Sections 7-8-17-18. 1968 - Billy D. Buckler RLS reestablished the corner by proportionate measurement between corners east and west and between swamp edges to north and south. Set 1" pipe with 4" aluminum cap. 7" B.Spruce N01W 15.0', 7" B.Spruce S82E 18.8'.
 (11-Sec. 7) Southwest 1/16 corner, Section 7. Not established in the original survey.

B. Description of corner evidence found and/or method applied in restoring or reestablishing corner:

(C5) Recovered the 1968 monument in good condition and at record bearing and distance from both 1968 NBTS, recovered in good condition with open blazes. Left the monument in place and made new witnesses as described below.
 (11-Sec. 7) Established the corner at the intersection of straight lines connecting opposite 1/16 corners.

C. Description of monument for corner and accessories established to perpetuate locating the position of the corner:

(C5) Found 1" ID iron pipe with 4" alum. MDNR cap. Set measuring nails w/ tags in the following marked trees: 8" B.Spruce N02E 15.2' old blazes * 8" B.Spruce S78E 19.05' do * 9" W.Birch N39W 25.0' "S7 NBT" 7" B.Spruce S43W 28.8' "S18 NBT" Bearings are magnetic. Distances are to nail with tag. * denotes 1968 NBT.	(11) Set 1" IDx36" I.pipe with 4" alum. MDNR cap. Set measuring nails with tags in the following marked trees: 8" Maple N22W 32.65' "SW1/16 BT" 10" Spruce N24E 17.55' do 8" Spruce S82E 10.35' do 14" Maple N63E 21.35' do A steel fence post is S72E 43.5' Bearings are magnetic. Distances are to nail with tag. Set cedar post adjacent.
--	--



Signed by Stephan J. Szyszkoski Date 10/26/04
 Surveyor's Michigan License No. 33986