

MICHIGAN
DEPARTMENT OF CONSERVATION
FORESTRY DIVISION

LAND CORNER RECORD

T. 44 N.R. 7 W

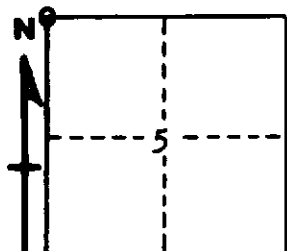
Mackinac COUNTY

DESCRIPTION OF CORNER Closing Corner for Sections 5 and 6

CORNER MONUMENT Wood Post

DATE MONUMENT PLACED AND WITNESSED 10/28/60

WITNESSES TO CORNER.....6" W. Birch (CC S 6 NBT) S 28° W 21 Links



6" Aspen (CC S 5 NBT) S 48° E 49 1/2 Links

AND

CIRCLE CORNER REGISTERED

DESCRIPTION IN DETAIL AS TO HOW CORNER WAS LOCATED AND IDENTIFIED OR RESTORED.

This corner was re-established by placing it 41 Links east of Section Corner for Sections 31 and 32, T 45 N, R 7 W, which was recorded distance in field notes. Corner lies 41 Links east of Corner for Sections 31 and 32, T 45 N, R 7 W.

SURVEYOR'S SEAL

SIGNED Billy D. Buckler DATE 5/25/61
REGISTERED LAND SURVEYOR
Billy D. Buckler