

**LAND CORNER RECORDATION CERTIFICATE**  
**Filing Requirement of Act 74, Mich. P.A. 1970**

For corners in

Mackinac

(County)

Located in:

Corner Code #

1. Public Land Survey	T <u>44N</u> R <u>8W</u>	<u>D11</u>
	T <u>    </u> R <u>    </u>	<u>    </u>
	T <u>    </u> R <u>    </u>	<u>    </u>
	T <u>    </u> R <u>    </u>	<u>    </u>
2. Property Controlling in Section	S <u>32</u> T <u>44N</u> R <u>8W</u>	<u>8</u>
	S <u>    </u> T <u>    </u> R <u>    </u>	<u>    </u>
3. Miscellaneous Property in Sec.	S <u>    </u> T <u>    </u> R <u>    </u>	<u>    </u>
	S <u>    </u> T <u>    </u> R <u>    </u>	<u>    </u>

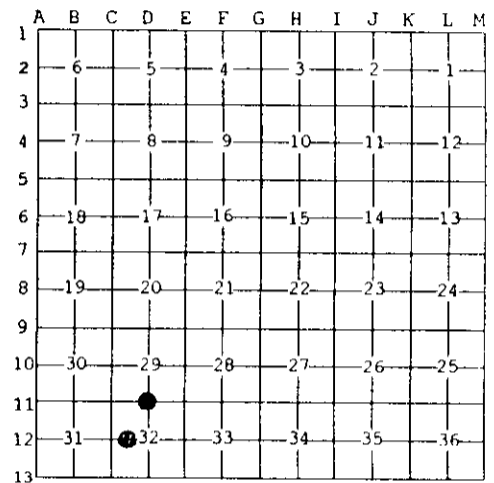
Register of Deeds Stamp & File Number

4. Lot No. \_\_\_\_\_, Recorded Plat \_\_\_\_\_  
 5. Private Claims \_\_\_\_\_

Sep 28 2004

I, Stephan J. Szyszkoski, in a field survey on \_\_\_\_\_, 19\_\_\_\_ do hereby state that under requirements of P.A. 74, Michigan P.A. of 1970, the corner points mentioned in lines 1 and 2 above were in conformance with regulations and rules therefore as required in the current manual of survey instructions of the United States Department of the Interior, Bureau of Land Management or by a decree of a Court of Law and /or that the corner points mentioned in lines 3, 4 and 5 above were in conformance with the rules of the Michigan Board of Land Surveyors or by a Decree of a Court of Law; established, re-established, monumented, recovered, found as expressed below:

NOTE: Not more than 2 corners, all in the same town and range, may be recorded on this certificate.



A. Description of original monument and accessories and/or subsequent restoration:  
 (D11) Quarter corner common to Sections 29-32. 1968 --Reestablished midway and on line between Section corners by Billy D. Buckler RLS. Set 1" pipe with 4" alum. cap. 8" Soft Maple S74E 19.8', 9" Soft Maple N21W 21.7'.  
 (8-Sec. 32) West 1/16 corner, Sec. 32. Not established in the original survey.

B. Description of corner evidence found and/or method applied in restoring or reestablishing corner:  
 (D11) Found but did not accept the 1968 monument, which was recovered in good condition but is located 54' East of the record position. A review of the field notes of the 1968 survey revealed that Mr. Buckler made an arithmetic error in his calculation of the distance from C11 to E11, which resulted in an erroneous position for this corner. I destroyed the 1968 monument (the 1968 NBTs were not found) and reestablished the corner according to the 1968 method - midway and on line between Section corners 2654.76' east and west.  
 (8-Sec. 32) Established the corner midway and on a straight line between Quarter corner 1325.42' West and Center of Section (unmonumented) 1325.42' East. From the corner thus established, a N-S fence line is West 48' distant. It does not appear to run very straight through the wooded area adjacent to the corner.

C. Description of monument for corner and accessories established to perpetuate locating the position of the corner.

(D11) Set 1"IDx36" I.pipe with 4" alum. MDNR cap. Set measuring nails with tags in: 12" Maple N22W 15.95'    mrdk "1/4S NBT" 10" Cedar N40W 14.9'     do 8" Cedar N15E 12.85'    do 6" Cherry S63W 13.2'    do Set cedar post adjacent. Bearings are magnetic.	(8) Set 1"IDx36" I.pipe with 4" alum. MDNR cap. Set measuring nails with tags in: 6" Balsam S18E 36.6'    mrdk "W1/16 BT" 6" W. Birch S46E 60.65'    do 4" Maple N29W 5.75'     do 5" Maple N62W 28.5'     do Set a cedar post adjacent. Bearings are magnetic.
---	--



Signed by Stephan J. Szyszkoski  
 Surveyor's Michigan License No. 33986

Date 10/27/04