

MICHIGAN
DEPARTMENT OF CONSERVATION
FORESTRY DIVISION

LAND CORNER RECORD

T. 44N N.R. 10W

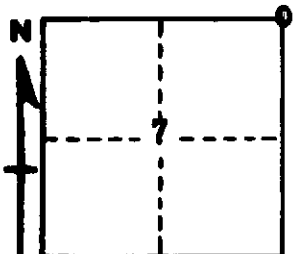
Mackinac COUNTY

DESCRIPTION OF CORNER Sec. Cor. common to Secs. 5-6-7-8

CORNER MONUMENT 1" pipe with 4" aluminum cap

DATE MONUMENT PLACED AND WITNESSED 10-31-69

WITNESSES TO CORNER..... 8" B. Cherry (S6 NBT) N54°W 41.7'



5" Hard Maple (NBT) S81°E 29.3'

AND

CIRCLE CORNER REGISTERED

DESCRIPTION IN DETAIL AS TO HOW CORNER WAS LOCATED AND IDENTIFIED OR RESTORED.

This corner re-established at record distance and in linewith an old fence line to west. Found fence corner, $\frac{1}{2}$ mile west and $\frac{1}{4}$ mile west. Found no evidence of original corner. Corner lies 66' north of an old E-W railroad grade.

SURVEYOR'S SEAL

Billy D. Buckler
SIGNED Billy D. Buckler DATE 3-2-70
REGISTERED LAND SURVEYOR