

MICHIGAN  
DEPARTMENT OF CONSERVATION  
FORESTRY DIVISION

LAND CORNER RECORD

T. 44N R. 10W

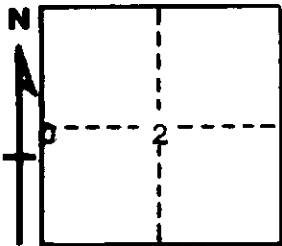
Mackinac COUNTY

DESCRIPTION OF CORNER ¼ Cor. bet. Secs. 2-3

CORNER MONUMENT Wood Post

DATE MONUMENT PLACED AND WITNESSED 12-9-69

WITNESSES TO CORNER..... 12" W. Spruce (2S NBT) S25°E 5.9'



10" W. Spruce (2S NBT) N55°W 20.0'

AND

CIRCLE CORNER REGISTERED

DESCRIPTION IN DETAIL AS TO HOW CORNER WAS LOCATED AND IDENTIFIED OR RESTORED.

This corner replaced from probable witnesses; two hemlock stumps, bearing N45°W, 04 links and S40°E 10 links. Found no evidence of blazes but did find scars which could possibly have been blazes. Distance north to stream in deep gully is 1¼ chains; record indicates 85 links. Position fits well with corners ½ mile to north and south.

SURVEYOR'S SEAL

SIGNED Billy D. Buckler DATE 12-3-70  
REGISTERED LAND SURVEYOR