

MICHIGAN
DEPARTMENT OF CONSERVATION
FORESTRY DIVISION

LAND CORNER RECORD

T. 44N N. R. 10W

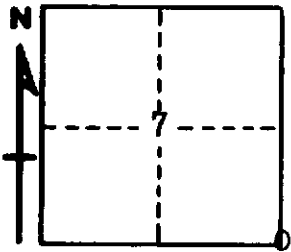
Mackinac COUNTY

DESCRIPTION OF CORNER Sec. Cor. common to Secs. 7-8-17-18

CORNER MONUMENT Cedar Post

DATE MONUMENT PLACED AND WITNESSED 12-11-69

WITNESSES TO CORNER..... 8" B. Cherry (S8 NBT) N40°E 32.6'



6" B. Cherry (NBT) S8°W 21.7'

AND

CIRCLE CORNER REGISTERED

DESCRIPTION IN DETAIL AS TO HOW CORNER WAS LOCATED AND IDENTIFIED OR RESTORED.

This corner re-established on line bet. a Sec. Cor., one mile west and a Sec. Cor., one mile east. Found no evidence of original corner.
Found a 1/16 corner, 1/4 mile to east, placed by T. L. Jackson, R.L.S., St. Ignace.

Corner lies 85' south of a woods road.

SURVEYOR'S SEAL

Billy D. Buckler
SIGNED Billy D. Buckler DATE 12-3-70
REGISTERED LAND SURVEYOR