

34

**LAND CORNER RECORDATION CERTIFICATE**  
Filing Requirement of Act 74, Mich. P.A. 1970

For corners in

Mackinac

(County)

Located in:

Corner Code #

1. Public Land Survey

T 44N R 10W

C4

T 44N R 10W

D3

T R

T R

2. Property Controlling  
in Section

S T R

S T R

3. Miscellaneous  
Property in Sec.

S T R

S T R

Register of Deeds Stamp & File Number

4. Lot No. \_\_\_\_\_, Recorded Plat \_\_\_\_\_

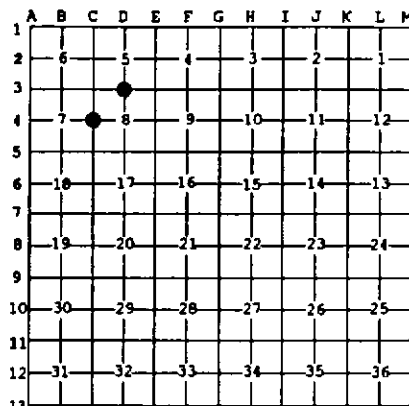
5. Private Claims \_\_\_\_\_

D3 Jul 22 1997

C4 Jul 21 1997

I, Stephan J. Szyszkoski, in a field survey on \_\_\_\_\_, 19\_\_\_\_ do hereby state that under requirements of P.A. 74, Michigan P.A. of 1970, the corner points mentioned in lines 1 and 2 above were in conformance with regulations and rules therefore as required in the current manual of survey instructions of the United States Department of the Interior, Bureau of Land Management or by a decree of a Court of Law and for that the corner points mentioned in lines 3, 4 and 5 above were in conformance with the rules of the Michigan Board of Land Surveyors or by a Decree of a Court of Law, established, re-established, monumented, recovered, found as expressed below:

NOTE: Not more than 2 corners, all in the same town and range, may be recorded on this certificate.



A. Description of original monument and accessories and/or subsequent restoration:

(C4) Quarter corner common to Sections 7-8. 1976 record by Billy D. Buckler, RLS: "Corner reestablished by single proportionate measure, between two Section Corners. Found no evidence of original corner. Placed 1" pipe with 4" aluminum cap at corner. New Bearings 5' Soft Maple N21W 33.0', 6' Soft Maple S12E 26.7'. Corner lies 13' North of an old RR grade".

(D3) Quarter corner common to Sections 5-8. 1976 record by Billy D. Buckler, RLS: "Corner reestablished by single proportionate measure between Sec. Cor. 1/2 mile West and an original W. Pine line tree 2332.4' East. Corner lies in a green Cedar Swp. Placed 1" pipe with 4" aluminum cap at corner. New Bearings 16" Cedar S84W 19.5', 16" Hemlock S47E 37.9'".

B. Description of corner evidence found and/or method applied in restoring or reestablishing corner:

(C4) Recovered the 1976 monument, a 1" ID iron pipe capped with a 4" dia. cast aluminum MDNR tablet, in good condition, and at record bearing and distance from the 1976 witness trees, both recovered in good condition. The RR grade has been pretty much obliterated by logging traffic. Left the monument in place, marked new top blazes on the 1976 trees, and marked two new accessories as described below. Corner recovered and re-witnessed by T. Stark, Newberry District Office.

(D3) Recovered the 1976 monument as described, a 1" ID iron pipe capped with a 4" dia. cast aluminum MDNR tablet, in good condition, and at record bearing and distance from the remaining witness Hemlock which is dead but standing. The cedar has been cut. Left the monument in place and marked four new accessories as described below. Corner recovered and re-witnessed by T. Stark, Newberry District Office.

C. Description of monument for corner and accessories established to perpetuate locating the position of the corner:

(C4) Found 1" pipe with 4" MDNR cap.  
Blazed, scribed, and set measuring nails  
in the following:

8" Maple N22W 33.3' "1/4S"  
10" Maple S11E 26.6' "1/4S"  
Twin 8" Maple S29E 21.1' "1/4S NBT"  
4" Balsam N14W 8.65' "1/4S NBT"

Placed a 3" squared and scribed cedar  
post adjacent. Bearings are magnetic.

(D3) Found 1" pipe with 4" MDNR cap.  
Blazed, scribed, and set measuring nails  
in the following:

3" W. Birch S23N 19.2' "1/4S NBT"  
4" W. Birch S44E 14.15' "1/4S NBT"  
5" Cedar N35E 33.4' "1/4S NBT"  
5" Balsam N12W 22.7' "1/4S NBT"

Placed a 4" squared and scribed cedar  
post adjacent. Bearings are magnetic.



Signed by

Stephan J. Szyszkoski

Date

4-21-98

Surveyor's Michigan License No.

33986

For the Michigan Department of Natural Resources - Forest Management Division