

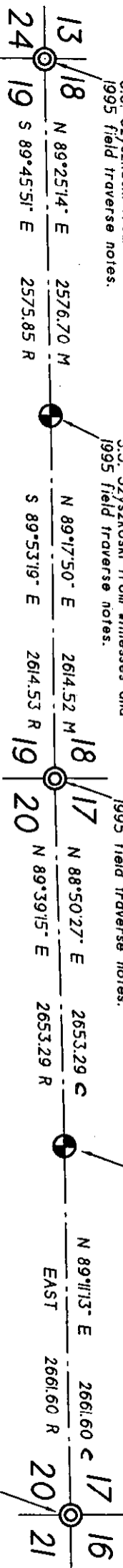
Reestablished 14 Aug 2002 by
S.J. Szyzskowski from witnesses and
1995 field traverse notes.

Reestablished 14 Aug 2002 by
S.J. Szyzskowski from witnesses and
1995 field traverse notes.

Reestablished 14 Aug 2002 by
S.J. Szyzskowski from witnesses and
1995 field traverse notes.

1995 monument not recovered.
No monument set.

Recovered County monument
as described in Book D of LCRC
Page 0375.



- R - 1995 Remonumentation Program measurement by David B. Guthrie, PS 22435
- M - 2002 Michigan D.N.R. measurement between reestablished corners
S.J. Szyzskowski, PS 33986 (Bearings are MCS83)
- C - 2002 Michigan D.N.R. calculation to 1995 record position of D7, not recovered.

