

MICHIGAN
DEPARTMENT OF CONSERVATION
FORESTRY DIVISION

LAND CORNER RECORD

T. 44N N.R. 11W

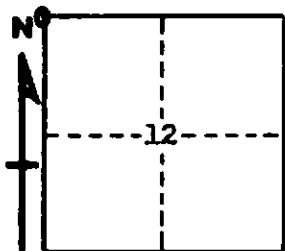
Mackinac COUNTY

DESCRIPTION OF CORNER Sec. Cor. common to Secs. 1-2-11-12

CORNER MONUMENT 1 1/2" x 30" iron pipe, buried in road intersection

DATE MONUMENT PLACED AND WITNESSED 8-27-69

WITNESSES TO CORNER..... 12" Hard Maple (S11 NBT) S44°W 22.7'



8" Hard Maple (S12 NBT) S59°E 25.7'

AND

CIRCLE CORNER REGISTERED

DESCRIPTION IN DETAIL AS TO HOW CORNER WAS LOCATED AND IDENTIFIED OR RESTORED.

This corner placed in intersection of an old road east and west; an old RR Grade north and south. This position is nearly equi-distant between Sec. Cors., one mile to east and to west.

SURVEYOR'S SEAL

SIGNED *Billy D. Buckler.*
Billy D. Buckler DATE 3-6-70
REGISTERED LAND SURVEYOR