

SURVEY & REMONUMENTATION

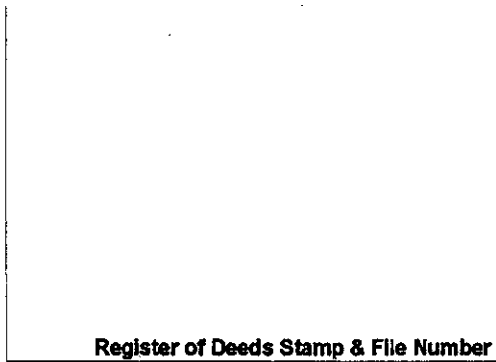
APR 29 1996

COMMISSION

LAND CORNER RECORDATION CERTIFICATE Filing Requirement of Act 74, Mich. P.A. 1970

For corners in

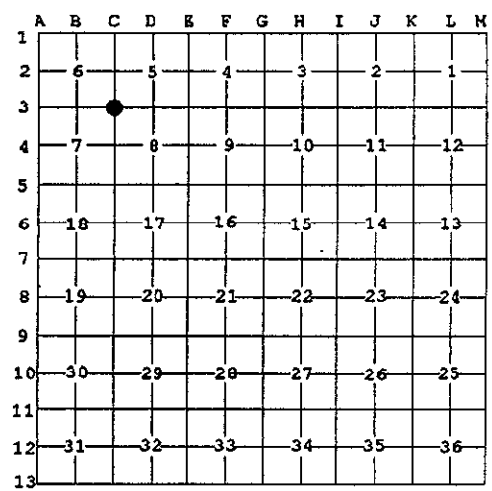
<u>Macomb</u> <small>(County)</small>	Located In: <u>Erin/Lake Township</u>	Corner Code # <u>C3</u>
1. Public Land Survey	T <u>1N</u> R <u>13E</u>	<u>C3</u>
	T _____ R _____	_____
	T _____ R _____	_____
	T _____ R _____	_____
2. Property Controlling in Section	S _____ T _____ R _____	_____
	S _____ T _____ R _____	_____
3. Miscellaneous Property in Sec.	S _____ T _____ R _____	_____
	S _____ T _____ R _____	_____



4. Lot No. _____, Recorded Plat _____
5. Private Claims _____

I, Craig P. Amey, in a field survey on August 7, 1995 do hereby certify that under requirements of P.A. 74, Michigan P.A. of 1970, the corner points mentioned in lines 1 and 2 above were in conformance with regulations and rules therefore as required in the current manual of survey instructions of the United States Department of the Interior, Bureau of Land Management or by a decree of a Court of Law and /or that the corner points mentioned in lines 3, 4 and 5 above were in conformance with the rules of the Michigan Board of Land Surveyors or by a Decree of a Court of Law; established, re-established, monumented, re-monumented, recovered, found as expressed below:

NOTE: Not more than 4 corners, all in the same town and range, may be recorded on this certificate.



A. Description of original monument and accessories and/or subsequent restoration:

1818	GLO		William Preston	No witnesses remain
1987	LCRC	L4241 P429	Daniel Sandomierski	Found 3/8" iron as per MCRC
1990	Cert. of Survey		William E. Soderberg	Found 3/8" iron in mon box
1994	Cert. of Survey		Raymond J. Donnelly	Found 1/2" iron in mon box

B. Description of corner evidence found and/or method applied in restoring or reestablishing corner:

Found 3/8" iron in mon box in the centerline of 13 Mile Road (concrete)
This corner verified by:

Witnesses from LCRC L4241 P429

N22°E	59.44	PK in E side of utility pole
N05°E	48.72	Nail and MCRC tag in W face of a utility pole
N41°W	40.03	"X" on the SE bolt in RR signal post
S34°W	43.50	Nail and MCRC tag in SE face of a utility pole

Witnesses from Cert. of Survey, William E. Soderberg

NE	48.72	Nail and MCRC tag in W face of a utility pole
NE	59.44	PK in east face of a utility pole
SW	43.50	Nail and MCRC tag in SE face of a utility pole
NW	40.03	"X" on SE bolt of RR signal

Witnesses from Cert. of Survey, Raymond J. Donnelly

10°	48.73	PK and MCRC tag in E face of a utility pole
26°	59.26	Spike with RJD tag in SW face of a utility pole
115°	109.58	Centerline of a hydrant
323°	43.45	Nail and MCRC tag in S face of a utility pole

ACCEPTED BY THE MACOMB COUNTY SURVEY PE GROUP AS THE OFFICIAL CORNER UNDER MICHIGAN PUBLIC ACT 345 OF 1990 AT A MEETING HELD ON 8-15-95

William E. Soderberg
WILLIAM E. SODERBERG, P.S., CHAIRMAN



E 2726.60 South quarter post of section 5 (D3) (GLO distance =40ch)

C. Description of monument for corner and accessories established to perpetuate locating the position of the corner:

REPLACED 3/8" IRON WITH 3/4" X 24" IRON WITH MCR CAP #34970 IN EXISTING MONUMENT BOX

AZ 10°	48.73	PK and MCRC tag in E face of a utility pole
AZ 26°	59.26	Spike with RJD tag in SW face of a utility pole
AZ 115°	109.58	Centerline of a hydrant
AZ 323°	43.45	Nail and MCRC tag in S face of a utility pole

The selected location is accepted by me and is generally accepted by professional surveyors as the best available evidence of the position of the original corner.

Signed by *C. P. Amey* Date 12-15-95
Surveyor's Michigan License No. 34970

FORM APPROVED BY MICHIGAN STATE BOARD OF LAND SURVEYORS, JAN. 28,

1971 REVISED MAY 14, 1975
REVISED JAN., 1983