

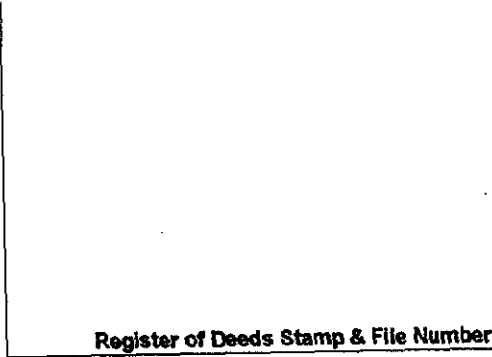
# SURVEY & REMONUMENTATION

APR 29 1996

## COMMISSION LAND CORNER RECORDATION CERTIFICATE Filing Requirement of Act 74, Mich. P.A. 1970

For corners in

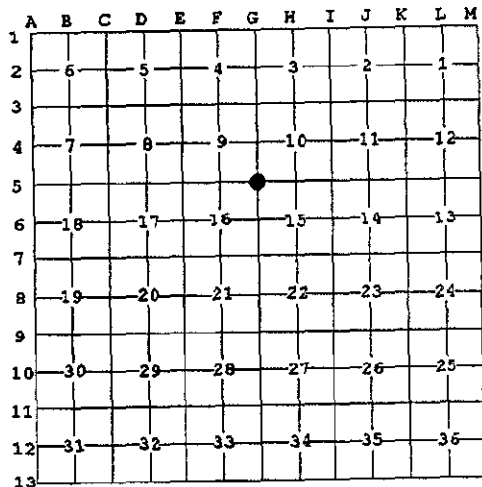
Macomb	Located In:	Corner Code #G5
(County)	ErinLake Township	
1. Public Land Survey	T <u>1N</u> R <u>13E</u>	<u>G5</u>
	T ___ R ___	_____
	T ___ R ___	_____
	T ___ R ___	_____
2. Property Controlling in Section	S ___ T ___ R ___	_____
	S ___ T ___ R ___	_____
3. Miscellaneous Property in Sec.	S ___ T ___ R ___	_____
	S ___ T ___ R ___	_____



4. Lot No. \_\_\_\_\_, Recorded Plat \_\_\_\_\_  
5. Private Claims \_\_\_\_\_

I, Craig P. Amey, in a field survey on August 8, 1995 do hereby certify that under requirements of P.A. 74, Michigan P.A. of 1970, the corner points mentioned in lines 1 and 2 above were in conformance with regulations and rules therefore as required in the current manual of survey instructions of the United States Department of the Interior, Bureau of Land Management or by a decree of a Court of Law and /or that the corner points mentioned in lines 3, 4 and 5 above were in conformance with the rules of the Michigan Board of Land Surveyors or by a Decree of a Court of Law; established, re-established, monumented, re-monumented, recovered, found as expressed below:

**NOTE: Not more than 4 corners, all in the same town and range, may be recorded on this certificate.**



A. Description of original monument and accessories and/or subsequent restoration:  
1818 GLO William Preston No witnesses remain

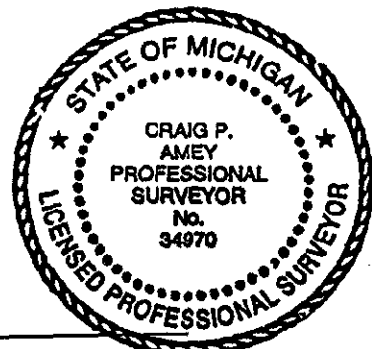
B. Description of corner evidence found and/or method applied in restoring or reestablishing corner:  
No evidence of the corner was found. Due to the widening of 12 Mile Road and Little Mack Road, there was no existing monumentation in subdivisions adjacent to the corner. "Mack Avenue Farms No. 2" is located in the northwest quadrant of this corner, and it has interior roads from which the corner could be reestablished. Irons found at the intersections of Harding, Coolidge, Congress and Washington fit the centerline of the roads. Irons found at the intersection of Harding, Coolidge, Congress and 12 Mile also fit the centerline of the roads. The south line of section 9 was established by extending the centerlines of Harding, Coolidge and Congress record distance to the section line. The centerline of Washington was extended to the east establishing the east line of section 9. Record distance along the south line of section 9 fit the existing centerline of Little Mack. This position is also within 0.12' of the record distance to Washington (1332.50R 1332.38R).

N 2683.22 East quarter post of section 9 (G4) (GLO = 40ch)  
S 2688.21 East quarter post of section 16 (G6) (GLO = 40 ch)  
C. Description of monument for corner and accessories established to perpetuate locating the position of the corner:

- SET A 3/4" X 24" IRON WITH MCR CAP #34970 IN A NEW MONUMENT BOX
- 150° 72.48 Set PK and Tag #17365 in the southwest face of a utility pole
- 228° 68.32 Set PK and Tag #17365 in the northwest face of a utility pole
- 314° 75.72 Set PK and Tag #17365 in the southwest face of a utility pole
- 43° 60.62 Set PK and Tag #17365 in the northwest face of a utility pole

The selected location is accepted by me and is generally accepted by professional surveyors as the best available evidence of the position of the original corner.

ACCEPTED BY THE MACOMB COUNTY SURVEY PEER GROUP AS THE OFFICIAL CORNER UNDER MICHIGAN PUBLIC ACT 345 OF 1990 AT A MEETING HELD ON 8-15-95  
*William E. Soderberg*  
WILLIAM E. SODERBERG, P.S., CHAIRMAN



Signed by *C. P. Amey* Date 12.15.95  
Surveyor's Michigan License No. 34970

FORM APPROVED BY MICHIGAN STATE BOARD OF LAND SURVEYORS, JAN. 28, 1971  
REVISED MAY 14, 1976  
REVISED JAN, 1983