

LAND CORNER RECORDATION CERTIFICATE
 Filing Requirement of Act 74, Mich. P.A. 1970

For corners in

<u>MACOMB</u> (County)	Located in: City of Sterling Heights	Corner Code #
1. Public Land Survey	T <u>2N</u> R <u>12E</u>	<u>B-11</u>
	T _____ R _____	_____
	T _____ R _____	_____
	T _____ R _____	_____
2. Property Controlling in Section	S _____ T _____ R _____	_____
	S _____ T _____ R _____	_____
3. Miscellaneous Property in Sec.	S _____ T _____ R _____	_____
	S _____ T _____ R _____	_____

SURVEY &
 REMONUMENTATION

APR 07 1998

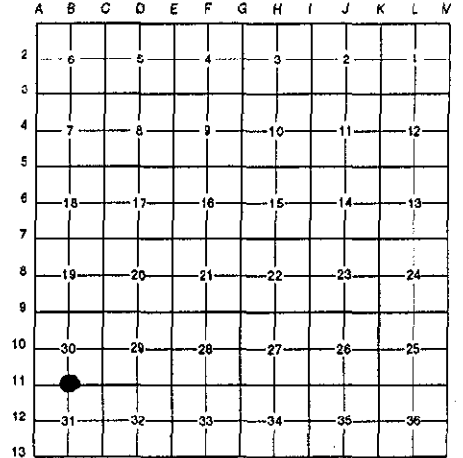
SECTION

Register of Deeds Stamp & File Number

4. Lot No. _____, Recorded Plat _____
 5. Private Claims _____

I, Randy Kolehouse, in a field survey on July 19 97, do hereby certify that under requirements of P.A. 74 Michigan P.A. of 1970, the corner points mentioned in lines 1 and 2 above were in conformance with regulations and rules therefore as required in the current manual of survey instructions of the United States Department of the Interior, Bureau of Land Management or by a decree of a Court of Law and/or that the corner points mentioned in lines 3, 4 and 5 above were in conformance with the rules of the Michigan Board of Land Surveyors or by a Decree of a Court of Law; established, re-established, monumented, re-monumented, recovered, found as expressed below:

NOTE: Not more than 4 corners, all in the same town and range, may be recorded on this certificate.



A. Description of original monument and accessories and/or subsequent restoration:

B-11	1817	G.L.O. Notes	Wampler	N/A	Post
	1995	L.C.R.C. L. 06679 P. 621	Higgins	#21570	Corner Monument
	1937	Supervisor's Plat No. 8 L. 13 P. 39	Beckley	N/A	N/A
	N/A	M.C. Tax Maps	N/A	N/A	N/A
	N/A	R/W Drawing #303	N/A	N/A	N/A

B. Description of corner evidence found and/or method applied in restoring or reestablishing corner:

B-11 L.C.R.C. L. 06679 P. 621 is recorded for the incorrect township. Found no monumentation for this corner in the field. Reset corner using right-of-way drawings for 15 Mile Road, Job No. 303, City of Sterling Heights, and Supervisors Plat No. 8 L. 13 P. 39.

ACCEPTED BY THE MACOMB COUNTY SURVEY PEER GROUP AS THE OFFICIAL CORNER UNDER MICHIGAN PUBLIC ACT 345 OF 1990 AT A MEETING HELD ON 11/14/97

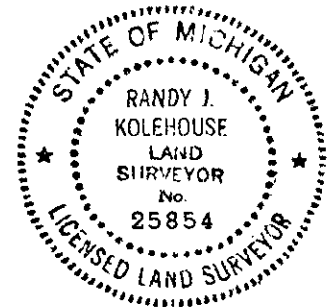
William E. Soderberg
 WILLIAM E. SODERBERG, P.S., CHAIRMAN

Measure East 2482.21' to C-11 (G.L.O. = 2640.0')
 Measure West 2611.59' to A-11 (G.L.O. = 2605.0') (Supervisors Plat No. 8 = 2611.0' ±)

C. Description of monument for corner and accessories established to perpetuate locating the position of the corner:

B-11 I set a 4" x 36" concrete monument with a 1/2" x 36" rebar w/2" diameter aluminum cap stamped "Macomb County Monument MI Act 345 #25854."

- N 10° E 99.50' - Set P.K. Nail & Macomb Co. Remon. Tag in W Side Light Pole
- N 50° E 29.26' - Set P.K. Nail & Macomb Co. Remon. Tag in NW Side 18" Box Elder
- S 23° E 32.33' - Set P.K. Nail & Macomb Co. Remon. Tag in NE Side 15" Box Elder
- S 33° W 32.77' - Set P.K. Nail & Macomb Co. Remon. Tag in SE Side 15" Box Elder
- C/L 15 Mile Road North 146' ±



The selected location is accepted by me and is generally accepted by professional surveyors as the best available evidence of the position of the original corner.

Signed by Randy J. Kolehouse Date 11/14/97

Surveyor's Michigan License No. 25854

742