

LAND CORNER RECORDATION CERTIFICATE  
 Filing Requirement of Act 74, Mich. P.A. 1970

For corners in

<u>MACOMB</u> (County)	Located in: City of Sterling Heights	Corner Code # C-11
1. Public Land Survey	T <u>2N</u> R <u>12E</u>	_____
	T _____ R _____	_____
	T _____ R _____	_____
	T _____ R _____	_____
2. Property Controlling in Section	S _____ T _____ R _____	_____
	S _____ T _____ R _____	_____
3. Miscellaneous Property in Sec.	S _____ T _____ R _____	_____
	S _____ T _____ R _____	_____
4. Lot No. _____, Recorded Plat _____		
5. Private Claims _____		

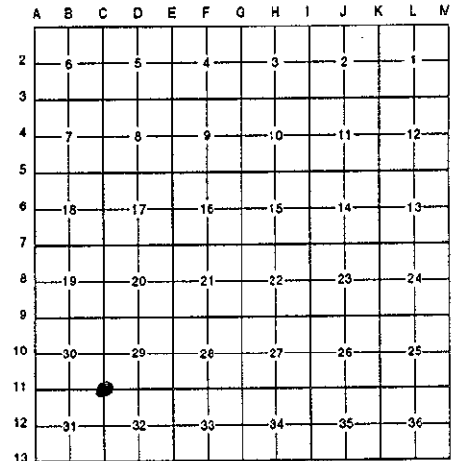
SURVEY &  
 REMONUMENTATION

APR 07 1998

SECTION

Register of Deeds Stamp & File Number

I, Randy Kolehouse, in a field survey on July 23 19 97, do hereby certify that under requirements of P.A. 74 Michigan P.A. of 1970, the corner points mentioned in lines 1 and 2 above were in conformance with regulations and rules therefore as required in the current manual of survey instructions of the United States Department of the interior, Bureau of Land Management or by a decree of a Court of Law and/or that the corner points mentioned in lines 3, 4 and 5 above were in conformance with the rules of the Michigan Board of Land Surveyors or by a Decree of a Court of Law; established, re-established, monumented, re-monumented, recovered, found as expressed below:



NOTE: Not more than 4 corners, all in the same town and range, may be recorded on this certificate.

A. Description of original monument and accessories and/or subsequent restoration:

C-11	1817	G.L.O. Notes	Wampler	N/A	Post
	1967	Miracle Homes Sub. L. 58 P. 19-21	N/A	N/A	N/A
	1991	L.C.R.C. L. 5280 P. 017	Fenn	#23505	1/2" Iron
	N/A	M.C. Tax Maps	N/A	N/A	N/A

B. Description of corner evidence found and/or method applied in restoring or reestablishing corner:

C-11 I found a 1/2" rebar in a monument box 145' ± South of the C/L intersection of Ryan Road (conc.) running North and South and 15 Mile Road (conc.) running East and West which checks with witnesses listed below.

- L.C.R.C. L. 05280 P. 017 (1991)
- S.E. 59.91 to Nail & Cap in N.E. Face U. Pole
- N.W. 153.09 to P.K. Nail & Washer in N.E. Face Wood Traffic Signal Pole
- N.E. 141.03 to P.K. Nail & Washer in N.W. Face of Light Pole

ACCEPTED BY THE MACOMB COUNTY SURVEY PEER GROUP AS THE OFFICIAL CORNER UNDER MICHIGAN PUBLIC ACT 345 OF 1990 AT A MEETING HELD ON 11/14/97  
  
 WILLIAM E. SODERBERG, P.S., CHAIRMAN

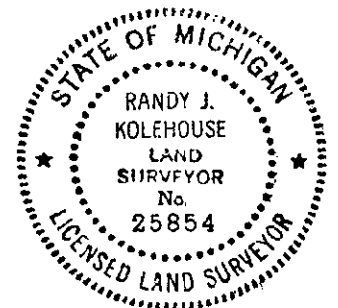
- Measure North 2652.53' to C-10 (G.L.O. = 2640.0') (Miracle Homes Sub. = 2652.9')
- Measure South 2645.26' to C-12 (G.L.O. = 2640.0')
- Measure East 2811.51' to D-11 (G.L.O. = 2659.5')
- Measure West 2482.21' to B-11 (G.L.O. = 2640.0')

C. Description of monument for corner and accessories established to perpetuate locating the position of the corner:

C-11 I replaced the found 1/2" rebar with a 3/4" x 24" iron rod w/2" diameter aluminum cap stamped "Macomb County Monument MI Act 345 #25854" in an existing monument box.

- S 45° E 59.85' - Set P.K. Nail & Macomb Co. Remon. Tag in NE Side Util. Pole
- N 15° W 153.16' - Set P.K. Nail & Macomb Co. Remon. Tag in NE Side Wood Traffic Lt. Pole
- N 29° E 141.07' - Set P.K. Nail & Macomb Co. Remon. Tag in NW Side Lt. Pole
- S 68° W 66.05' - Set C/L Most N'ly Steel Fence Post

The selected location is accepted by me and is generally accepted by professional surveyors as the best available evidence of the position of the original corner.



Signed by Randy J. Kolehouse Date 11/14/97  
 Surveyor's Michigan License No. 25854

746