

**SURVEY &
REMONUMENTATION**

C152243

APR 28 1995

LAND CORNER RECORDATION CERTIFICATE
Filing Requirement of Act 74, Mich. P.A. 1970

94 DEC 14 AM 10:53

For corners in **COMMISSION**

MACOMB COUNTY
REGISTERED
DEEDS
MICHIGAN

MACOMB (County)
Located In: **Sterling Township** Corner Code **E-3**

1. Public Land Survey T 2N R 12E _____
T _____ R _____
T _____ R _____
T _____ R _____

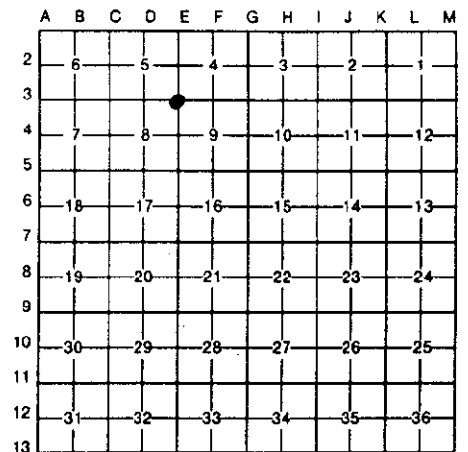
2. Property Controlling S _____ T _____ R _____
in Section S _____ T _____ R _____

3. Miscellaneous S _____ T _____ R _____
Property in Sec. S _____ T _____ R _____

LIBER **6527** PAGE **820**

Register of Deeds Stamp & File Number

4. Lot No. _____, Recorded Plat _____
5. Private Claims _____



Randy Kolehouse, in a field survey on June 28, 19 94, do hereby certify that under requirements of P.A. 74, Michigan P.A. of 1970, the corner points mentioned in lines 1 and 2 above were in conformance with regulations and rules therefore as required in the current manual of survey instructions of the United States Department of the Interior, Bureau of Land Management or by a decree of a Court of Law and/or that the corner points mentioned in lines 3, 4 and 5 above were in conformance with the rules of the Michigan Board of Land Surveyors or by a Decree of a Court of Law; established, re-established, monumented, re-monumented, recovered, found as expressed below:

NOTE: Not more than 4 corners, all in the same town and range, may be recorded on this certificate.

1. Description of original monument and accessories and/or subsequent restoration:

E-3	1817	G.L.O.	Notes	Wampler	NA	Post
	1974	L.C.R.C.	L. 2472 P. 797	Patterson	#17631	Steel Spike
	1976	L.C.R.C.	L. 2703 P. 226	Hooth	#7966	Rod with Disc. in Mon. Box
	1985	L.C.R.C.	L. 3836 P. 266	Ward	#22445	Iron in Mon. Box
	1986	L.C.R.C.	L. 3945 P. 713	Avey	#30076	Iron in Mon. Box
	1986	L.C.R.C.	L. 4077 P. 542	Kobs	#14097	Iron in Mon. Box

2. Description of corner evidence found and/or method applied in restoring or reestablishing corner:

E-3 Found 5/8" rebar in monument box at center line intersection Mound and 19 Mile Roads.

All witnesses from previous L.C.R.C.'s have been destroyed.

ACCEPTED BY THE MACOMB COUNTY SURVEY PEER GROUP AS THE OFFICIAL CORNER UNDER MICHIGAN PUBLIC ACT 345 OF 1990 AT A MEETING HELD ON 10-4-94

William E. Soderberg
WILLIAM E. SODERBERG, P.S., CHAIRMAN

Measure S. 2692.4 to E-4 (Heins Gardens = 2692.4 ±) (G.L.O. 2640)
Measure E. 2649.5 to F-3 (G.L.O. 2673)
Measure N. 2613.13 to E-2 (Supervisor's Plat of Eyster's Mound Road Farm #2 = 2614.8) (G.L.O. 2640)
Measure W. 2715.66 to D-3 (G.L.O. 2658.5)

3. Description of monument for corner and accessories established to perpetuate locating the position of the corner:

E-3 I replaced the found 5/8" Rebar with a 3/4" x 24" Iron Rod w/2" diameter aluminum cap stamped "Macomb County Monument MI Act 345 #25854" in an existing Monument Box.

PK SW'ly Face P. Pole N 70° W 141.29'
"+ Center Line Top Nut of Hydrant S 67° W 109.83'
PK with Tag SW Face Util. Pole S 55° E 107.88'
PK with Tag NW'ly Face P. Pole N 73° E 104.03'

The selected location is accepted by me and is generally accepted by professional surveyors as the best available evidence of the position of the original corner.

igned by Randy J. Kolehouse Date 10/14/94
urveyor's Michigan License No. 25854

