

SURVEY & REMONUMENTATION

APR 28 1995

C152244

LAND CORNER RECORDATION CERTIFICATE COMMISSION Filing Requirement of Act 74, Mich. P.A. 1970

94 DEC 14 AM 10:53

or corners in

MACOMB
(County)

Located In: Sterling Township Corner Code #

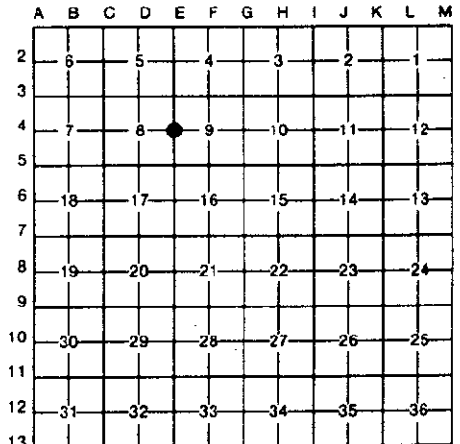
Public Land Survey	T <u>2N</u> R <u>12E</u>	<u>E-4</u>
	T _____ R _____	_____
	T _____ R _____	_____
	T _____ R _____	_____
Property Controlling in Section	S _____ T _____ R _____	_____
Miscellaneous	S _____ T _____ R _____	_____
Property in Sec.	S _____ T _____ R _____	_____

REGISTER OF DEEDS
MACOMB COUNTY

LIBER **6527** PAGE **821**

Register of Deeds Stamp & File Number

Lot No. _____, Recorded Plat _____
Private Claims _____



Randy Kolehouse, in a field survey on June 28, 1994, hereby certify that under requirements of P.A. 74, Michigan P.A. of 1970, the corner points mentioned in lines 1 and 2 above were in conformance with regulations and rules therefore as required in the current manual of survey instructions of the United States Department of the Interior, Bureau of Land Management or by a decree of a Court of Law and/or that the corner points mentioned in lines 3, 4 and 5 above were in conformance with the rules of the Michigan Board of Land Surveyors or by a Decree of a Court of Law; established, re-established, monumented, re-monumented, recovered, found as pressed below:

NOTE: Not more than 4 corners, all in the same town and range, may be recorded on this certificate.

Description of original monument and accessories and/or subsequent restoration:

E-4	1817	G.L.O.	Notes	Wampler	NA	Post
	1976	L.C.R.C.	L 2703 P. 227	Hooth	#7966	3/4" Rod in Mon. Box
	1977	L.C.R.C.	L 2886 P. 438	Patterson	#17631	1" Iron Mon. Box
	1986	L.C.R.C.	L 4069 P. 34 & 35	Ward	#22445	5/8" Bar in Mon. Box

Description of corner evidence found and/or method applied in restoring or reestablishing corner:

E-4 Found 5/8" rebar in monument box at center line intersection of Mound Road & 18-1/2 Mile Road.

L.C.R.C. L. 2886 P. 438 Checks Wits. ± 1'	L.C.R.C. L. 4089 P. 34 PK/W N. Side U.P. N 70° E 104.06' PK/W S. Side U.P. S 70° E 105.62'
--	--

Measure N. 2692.4 to E-3 (Heins Garden = 2692.4 ±) (G.L.O. 2640)
Measure S. 2635.25 to E-5 (MDOT 2635.20) (G.L.O. 2640)

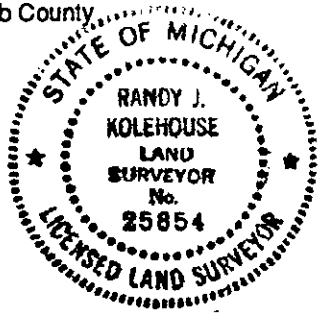
ACCEPTED BY THE MACOMB COUNTY SURVEY PEER GROUP AS THE OFFICIAL CORNER UNDER MICHIGAN PUBLIC ACT 345 OF 1990 AT A MEETING HELD ON 12-16-94

William E. Soderberg
WILLIAM E. SODERBERG, P.S., CHAIRMAN

Description of monument for corner and accessories established to perpetuate locating the position of the corner:

E-4 I replaced the found 5/8" Rebar with a 3/4" x 24" Iron Rod w/2" diameter aluminum cap stamped "Macomb County Monument MI Act 345 #25854" in an existing Monument Box.

PK NW Face P. Pole N 66° E 104.07'
Center Line Top Nut Hyd. N 78° E 147.19'
PK SW Face P. Pole S 60° E 105.62'
Center Line Top Nut Hyd. S 64° E 110.87'
PK NE Face P. Pole N 61° W 102.72'
Center Line Top Nut Hyd. N 61° W 110.01'



The selected location is accepted by me and is generally accepted by professional surveyors as the best available evidence of the position of the original corner.

Signed by Randy J. Kolehouse Date 10/14/94
Surveyor's Michigan License No. 25854