

**SURVEY & REMONUMENTATION**  
**LAND CORNER RECORDATION CERTIFICATE**  
 Filing Requirement of Act 74, Mich. P.A. 1970

APR 07 1998

For corners in

<u>MACOMB</u> (County)	Located in: City of Sterling Heights	Corner Code # E-8
1. Public Land Survey	T <u>2N</u> R <u>12E</u>	_____
	T _____ R _____	_____
	T _____ R _____	_____
	T _____ R _____	_____
2. Property Controlling in Section	S _____ T _____ R _____	_____
	S _____ T _____ R _____	_____
3. Miscellaneous Property in Sec.	S _____ T _____ R _____	_____
	S _____ T _____ R _____	_____

**SECTION**  
 ACCEPTED BY THE MACOMB COUNTY SURVEY PEER GROUP AS THE OFFICIAL CORNER UNDER MICHIGAN PUBLIC ACT 345 OF 1990 AT A MEETING HELD ON 11/14/97

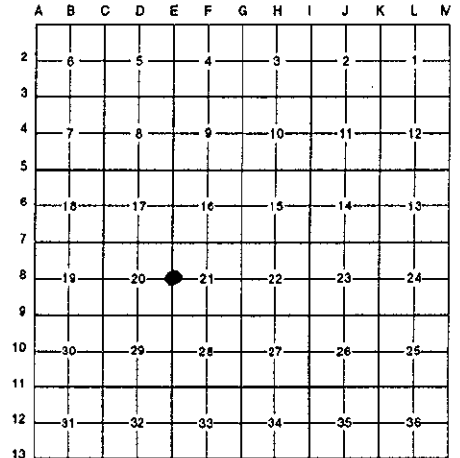
*William E. Soderberg*  
 WILLIAM E. SODERBERG, P.S., CHAIRMAN

Register of Deeds Stamp & File Number

4. Lot No. \_\_\_\_\_, Recorded Plat \_\_\_\_\_  
 5. Private Claims \_\_\_\_\_

I, Randy Kolehouse, in a field survey on July 24 19 97, do hereby certify that under requirements of P.A. 74 Michigan P.A. of 1970, the corner points mentioned in lines 1 and 2 above were in conformance with regulations and rules therefore as required in the current manual of survey instructions of the United States Department of the interior, Bureau of Land Management or by a decree of a Court of Law and/or that the corner points mentioned in lines 3, 4 and 5 above were in conformance with the rules of the Michigan Board of Land Surveyors or by a Decree of a Court of Law; established, re-established, monumented, re-monumented, recovered, found as expressed below:

**NOTE: Not more than 4 corners, all in the same town and range, may be recorded on this certificate.**



A. Description of original monument and accessories and/or subsequent restoration:

E-8	1817	G.L.O. Notes	Wampler	N/A	Post
	1943	Victory Garden Farms L. 22 P. 46	Giffels	N/A	N/A
	N/A	MCRC Wit. File No. 96	N/A	N/A	N/A
	1973	L.C.R.C. L. 2358, P. 934-935	Cantrell	#5782	5/8" Iron Pipe
	1980	Mound-Commerce Ind. Park L. 77 P. 20	Donnelly	#21563	N/A
	1989	M.C. Road Plans #1702	N/A	N/A	N/A
	N/A	M.C. Tax Maps	N/A	N/A	N/A

B. Description of corner evidence found and/or method applied in restoring or reestablishing corner:

E-8 I found a 1/2" rebar in the center median between the northbound and southbound lanes of Mound Road (conc.) running North and South and the C/L of Foxhill Road (conc.) extended running West which checks with witnesses listed below and Macomb Co. Road Commission Plans #1702.

MCRC Witness File No. 96	L.C.R.C. L. 2358 P. 934 (1973)
E 100.25' P.K. in D.E.P. (m. 101.08')	East 101.52' P.K. Nail in D.E. Pole (m. 101.08')

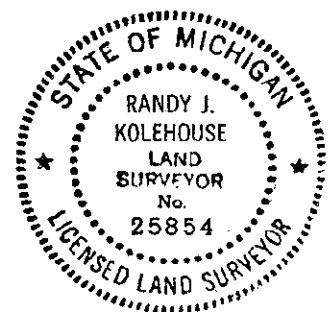
Measure North 2673.82' to E-7 (G.L.O. = 2640.0') (Victory Garden Farms = 2673.73') (MCRC Plans = 2674.25')  
 Measure South 2677.98' to E-9 (G.L.O. = 2640.0') (MCRC Plans = 2679.0')

C. Description of monument for corner and accessories established to perpetuate locating the position of the corner:

E-8 I replaced the found 1/2" rebar with a 4" x 36" concrete monument w/2" diameter aluminum cap stamped "Macomb County Monument MI Act 345 #25854."

- S 76° E 101.08' - Set P.K. Nail & Macomb Co. Remon. Tag in S Side D.E. Pole
- N 44° E 18.33' - Set P.K. Nail & Macomb Co. Remon. Tag in SE Side P. Pole
- N 66° W 99.95' - Set P.K. Nail & Macomb Co. Remon. Tag in SE Side P. Pole
- S 72° W 98.22' - Set P.K. Nail & Macomb Co. Remon. Tag in SE Side P. Pole
- S 38° E 4.95' - Set C/L NE Side 3" PVC Pipe 4.5' above Gnd. Ameritec Underground Pole

The selected location is accepted by me and is generally accepted by professional surveyors as the best available evidence of the position of the original corner.



Signed by Randy J. Kolehouse Date 11/14/97

Surveyor's Michigan License No. 25854

750