

LAND CORNER RECORDATION CERTIFICATE
 Filing Requirement of Act 74, Mich. P.A. 1970

SURVEY &
 REMONUMENTATION

APR 07 1998

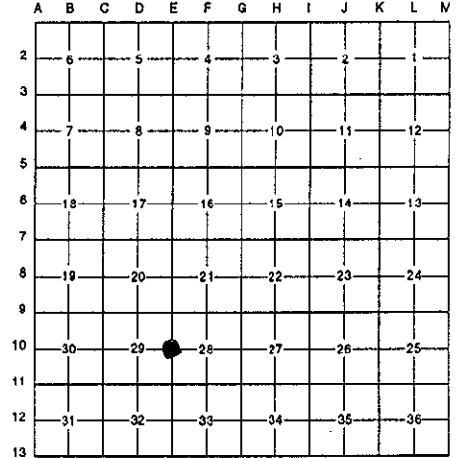
For corners in

MACOMB (County)	Located in: City of Sterling Heights	Corner Code #
1. Public Land Survey	T <u>2N</u> R <u>12E</u>	<u>E-10</u>
	T _____ R _____	_____
	T _____ R _____	_____
	T _____ R _____	_____
2. Property Controlling in Section	S _____ T _____ R _____	_____
	S _____ T _____ R _____	_____
3. Miscellaneous Property in Sec.	S _____ T _____ R _____	_____
	S _____ T _____ R _____	_____

SECTION
 ACCEPTED BY THE MACOMB COUNTY SURVEY PEER
 GROUP AS THE OFFICIAL CORNER UNDER MICHIGAN
 PUBLIC ACT 345 OF 1990 AT A MEETING HELD
 ON 11/4/97
William E. Soderberg
 WILLIAM E. SODERBERG, P.S., CHAIRMAN

Register of Deeds Stamp & File Number

4. Lot No. _____, Recorded Plat _____
 5. Private Claims _____



I, Randy Kolehouse, in a field survey on July 24 19 97, do hereby certify that under requirements of P.A. 74 Michigan P.A. of 1970, the corner points mentioned in lines 1 and 2 above were in conformance with regulations and rules therefore as required in the current manual of survey instructions of the United States Department of the interior, Bureau of Land Management or by a decree of a Court of Law and/or that the corner points mentioned in lines 3, 4 and 5 above were in conformance with the rules of the Michigan Board of Land Surveyors or by a Decree of a Court of Law; established, re-established, monumented, re-monumented, recovered, found as expressed below:

NOTE: Not more than 4 corners, all in the same town and range, may be recorded on this certificate.

A. Description of original monument and accessories and/or subsequent restoration:

E-10	1817	G.L.O. Notes	Wampler	N/A	Post
	1973	L.C.R.C. L. 2358 P. 936-937	Cantrell	#5782	5/8" Iron Pipe
	1973	Cert. Survey L. 2358 P. 925	Cantrell	#5782	N/A
	N/A	Supervisors Plat No. 6	N/A	N/A	N/A
	1993	MCRC Wit. File No. 122	Campbell	N/A	1/2" Iron
	N/A	M.C. Road Plans	N/A	N/A	N/A
	N/A	M.C. Tax Maps	N/A	N/A	N/A

B. Description of corner evidence found and/or method applied in restoring or reestablishing corner:

E-10 I found a 5/8" rebar in the center median between the northbound and southbound lanes of Mound Road (conc.) on line of a fence line running East and West which checks with witnesses listed below.

L.C.R.C. L. 2358 P. 936-937 (1973)	MCRC Witness File No. 122 (1993)
N 89° 35' W 92.33' Nail & Cap S Side D.E. Pole (m. 91.78')	91.83' West Nail & Cap in S. Side D.E. Pole
S 89° 25' W 102.00' Monument (m. 101.61')	12.70' East P.K. Nail in N. Side D.E. Pole
N 86° 25' East 12.08 P.K. Nail in Side of D.E. Pole (m. 12.62')	144.42' South Nail E. Side D.E. Pole
S 5° 35' E 132.40' Nail East Side D.E. Pole (m. 132.40')	

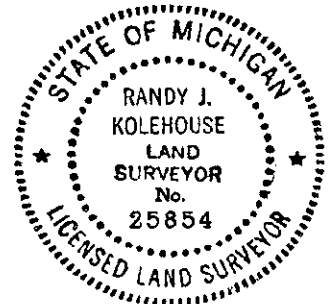
Measure North 2644.50' to E-9 (G.L.O. = 2640.0')
 Measure South 2655.86' to E-11 (G.L.O. = 2640.0') (Supervisors Plat No. 6 = 2655.4') (MCRC Plans = 2656.0')

C. Description of monument for corner and accessories established to perpetuate locating the position of the corner:

E-10 I replaced the found 5/8" rebar with a 4" x 36" concrete monument w/2" diameter aluminum cap stamped "Macomb County Monument MI Act 345 #25854."

- N 90° E 12.73' - Set P.K. Nail & Macomb Co. Remon. Tag in S Side P. Pole
- S 02° E 132.40' - Set P.K. Nail & Macomb Co. Remon. Tag in E Side P. Pole
- N 27° W 21.55' - Set Chiseled "X" on SE Side M.H. Rim
- N 86° W 91.78' - Set P.K. Nail & Macomb Co. Remon. Tag in S Side P. Pole

The selected location is accepted by me and is generally accepted by professional surveyors as the best available evidence of the position of the original corner.



Signed by Randy J. Kolehouse Date 11/14/97
 Surveyor's Michigan License No. 25854

752