

SURVEY & REMONUMENTATION

APR 28 1995

C152253

COMMISSION

LAND CORNER RECORDATION CERTIFICATE

Filing Requirement of Act 74, Mich. P.A. 1970

94 DEC 14 AM 10: 54

corners in

MACOMB

(County)

Located In:

Sterling
Township

Corner Code ##

Public Land Survey

T 2N R 12E G-5

T _____ R _____

T _____ R _____

T _____ R _____

Property Controlling
in Section

S _____ T _____ R _____

S _____ T _____ R _____

Miscellaneous

S _____ T _____ R _____

Property in Sec.

S _____ T _____ R _____

MACOMB COUNTY REGISTER OF DEEDS
MACOMB COUNTY, MI

LIBER **6527** PAGE **830**

Register of Deeds Stamp & File Number

Lot No. _____, Recorded Plat _____

Private Claims _____

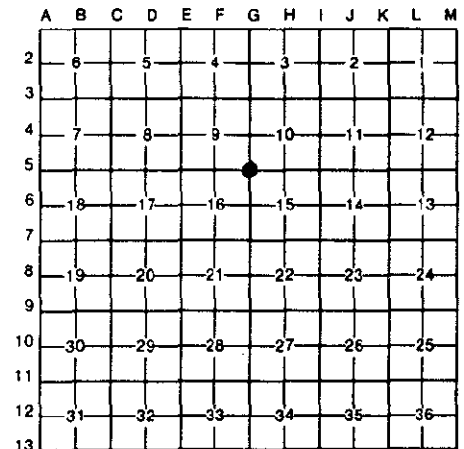
Randy Kolehouse in a field survey on June 28, 19 94

hereby certify that under requirements of P.A. 74, Michigan P.A. of 1970, the corner points mentioned in lines 1 and 2 above were in conformance with regulations and rules therefore as required in the current manual of survey instructions of the United States Department of the Interior, Bureau of Land Management or by a decree of a Court of Law and/or that the corner points mentioned in lines 3, 4 and 5 above were in conformance with the rules of the Michigan Board of Land Surveyors or by a Decree of a Court of Law; established, re-established, monumented, re-monumented, recovered, found as pressed below:

NOTE: Not more than 4 corners, all in the same town and range, may be recorded on this certificate.

Description of original monument and accessories and/or subsequent restoration:

Year	Notes	Wampler	NA	Post	
1817	G.L.O.	Notes	NA	Post	
1972	Survey	L. 2285 P. 811	Patterson	#17631	Fnd. Mon. in "Pot"
1978	L.C.R.C.	L. 2936 P. 224	Hooth	#7966	Conc. Mon. in Mon. Box
1992	MCRC	NA	Cambell, R.	NA	3/4" Pipe in Mon. Box



Description of corner evidence found and/or method applied in restoring or reestablishing corner:

5 Found concrete monument in monument box at center line of intersection of Van Dyke and 18 Mile Road.

L.C.R.C. L. 2936 P. 224

Lt. Pole N 55° E 61.07'

Lt. Pole N 20° E 69.92'

Measure N. 2552.68 to G-4 (G.L.O. 2640)

Measure S. 2741.85 to G-6 (MDOT 2741.33) (G.L.O. 2640)

Measure E. 2642.54 to H-5 (G.L.O. 2640)

Measure W. 2696.20 to F-5 (G.L.O. 2672.3)

ACCEPTED BY THE MACOMB COUNTY SURVEY PEER
GROUP AS THE OFFICIAL CORNER UNDER MICHIGAN
PUBLIC ACT 345 OF 1990 AT A MEETING HELD
ON 8-16-94

William E. Soderberg
WILLIAM E. SODERBERG, P.S., CHAIRMAN

Description of monument for corner and accessories established to perpetuate locating the position of the corner:

5 I placed a 2" diameter aluminum cap stamped "Macomb County Monument MI Act 345 #25854" on the existing Concrete Monument, in an existing Monument Box.

PK SW Face Util. Pole N 40° W 101.00'

PK SW Face Util. Pole S 59° W 89.81'

Bolt for Access Cover N Side Lt. Pole S 16° E 77.10'

PK with Tag N Face Util. Pole S 70° E 138.81'

PK with Tag NW Face Lt. Pole N 53° E 61.07'

The selected location is accepted by me and is generally accepted by professional surveyors as the best available evidence of the position of the original corner.

signed by Randy J. Kolehouse

25854

Date 10/14/94

Surveyor's Michigan License No. _____

