

LAND CORNER RECORDATION CERTIFICATE
Filing Requirement of Act 74, Mich. P.A. 1970

For corners in

<u>MACOMB</u> (County)	Located in: City of	Corner Code #
	Sterling Neights	
Public Land Survey	T <u>2N</u> R <u>12E</u>	<u>H-9</u>
	T _____ R _____	_____
	T _____ R _____	_____
	T _____ R _____	_____
Property Controlling in Section	S _____ T _____ R _____	_____
Miscellaneous	S _____ T _____ R _____	_____
Property in Sec.	S _____ T _____ R _____	_____

SURVEY & REMONUMENTATION

FEB 27 1997

COMMISSION

Register of Deeds Stamp & File Number

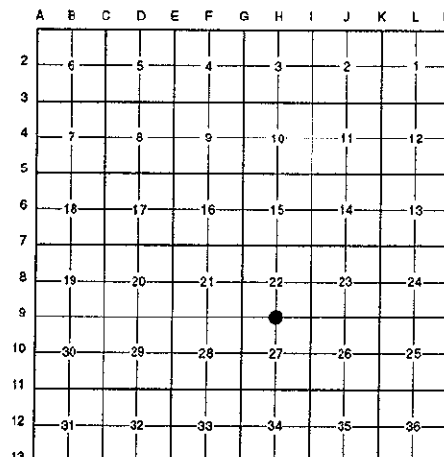
Lot No. _____, Recorded Plat _____
 Private Claims _____

Randy Kolehouse, in a field survey on May 8 19 96,
 hereby certify that under requirements of P.A. 74 Michigan P.A. of 1970, the corner points mentioned in lines 1 and 2 above were in conformance with regulations and rules therefore as required in the current manual of survey instructions of the United States Department of the interior, Bureau of Land Management or by a decree of a Court of Law and/or that the corner points mentioned in lines 3, 4 and 5 above were in conformance with the rules of the Michigan Board of Land Surveyors or by a Decree of a Court of Law; established, re-established, monumented, re-monumented, recovered, found as expressed below:

NOTE: Not more than 4 corners, all in the same town and range, may be recorded on this certificate.

Description of original monument and accessories and/or subsequent restoration:

19	1817	G.L.O. Notes	Wampler	N/A	Set Post
	1969	MCRC File No. 110	N/A	N/A	Iron in Monument Box
	1978	L.C.R.C. L. 2936 P. 229	Hooth	#7966	5/8" Iron in Monument Box



Description of corner evidence found and/or method applied in restoring or reestablishing corner:

I found a 5/8" rebar in a monument box at the C/L of the center median of 16 Mile Road which checked with the following witnesses. No witnesses remain from Wampler's G.L.O. notes or from the 1969 Macomb County Road Commission records. This point checks measurement to G-9 per MDOT Highway Plans for M-53 ± 0.60'. Accepted as corner.

L.C.R.C. L. 2936 P. 229
 S 25 W - 92.66 - Nail & Tag in West Face of Power Pole (m. 92.64')
 Due North - 105.91 - S.W. Cor of Brick Fence Post (m. 105.87')
 S 85 E - 40.60 - PK nail & Tag in X-over Pav't Joint (m. 40.57')

ACCEPTED BY THE MACOMB COUNTY SURVEY PEER GROUP AS THE OFFICIAL CORNER UNDER MICHIGAN PUBLIC ACT 345 OF 1990 AT A MEETING HELD ON 9-17-96
William E. Soderberg
 WILLIAM E. SODERBERG, P.S., CHAIRMAN

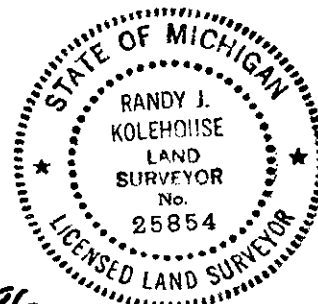
Measure East 2566.16' to I-9 (G.L.O. = 2583.9')
 Measure West 2665.82' to G-9 (G.L.O. = 2583.9') (MDOT = 2665.21')

Description of monument for corner and accessories established to perpetuate locating the position of the corner:

I replaced the found 5/8" rebar with a 3/4" x 24" iron rod w/2" diameter aluminum cap stamped "Macomb County Monument MI Act 345 #25854" in an existing monument box.

N 04° E 105.87' - Found P.K. Nail in Joint at SW Cor. Brick Fence Post
 N 59° E 152.23' - Found P.K. Nail w/Tag "WES #17635" NW Face Lt. Pole
 S 56° E 194.54' - Found P.K. Nail w/Tag "MCRC" SW Face P. Pole
 S 25° W 92.64' - Found P.K. Nail w/Tag in W Face P. Pole

The selected location is accepted by me and is generally accepted by professional surveyors as the best available evidence of the position of the original corner.



Recorded by Randy J. Kolehouse Date 11/19/96
 Surveyor's Michigan License No. 25854

FORM APPROVED BY MICHIGAN STATE BOARD OF LAND SURVEYORS, JAN. 28, 1971
 REVISED MAY 14, 1975
 REVISED JAN., 1983

638