

**LAND CORNER RECORDATION CERTIFICATE**  
**Filing Requirement of Act 74, Mich. P.A. 1970**

or corners in

<u>MACOMB</u> (County)	Located in: City of Sterling Heights	Corner Code #
Public Land Survey	T <u>2N</u> R <u>12E</u>	<u>I-8</u>
	T _____ R _____	_____
	T _____ R _____	_____
	T _____ R _____	_____
Property Controlling in Section	S _____ T _____ R _____	_____
Miscellaneous Property in Sec.	S _____ T _____ R _____	_____

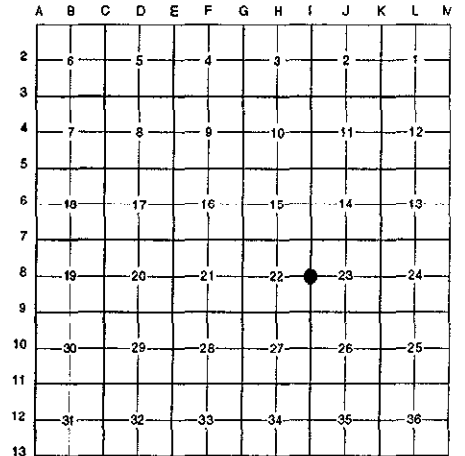
**SURVEY &  
REMONUMENTATION**

FEB 27 1997

COMMISSION

Register of Deeds Stamp & File Number

Lot No. \_\_\_\_\_, Recorded Plat \_\_\_\_\_  
 Private Claims \_\_\_\_\_



Randy Kolehouse, in a field survey on May 28 19 96, hereby certify that under requirements of P.A. 74 Michigan P.A. of 1970, the corner points mentioned lines 1 and 2 above were in conformance with regulations and rules therefore as required in the present manual of survey instructions of the United States Department of the Interior, Bureau of Land Management or by a decree of a Court of Law and/or that the corner points mentioned in lines 3, 4 and 5 above were in conformance with the rules of the Michigan Board of Land Surveyors or by a Decree of a Court of Law; established, re-established, monumented, re-monumented, recovered, found as pressed below:

**NOTE: Not more than 4 corners, all in the same town and range, may be recorded on this certificate.**

Description of original monument and accessories and/or subsequent restoration:

- 1817 G.L.O. Notes Wampler N/A Set Post
- 1928? MCRC File No. 100 N/A N/A Wood Stake 7" Down
- 1964 Grenal Subdivision L. 54 P. 13

Description of corner evidence found and/or method applied in restoring or reestablishing corner:

I found a 1/2" rebar at the C/L of Dodge Park Road (asph.) running North and South and 4' North of the C/L of 16-1/2 Mile Road (asph). Also found a P.K. nail 0.56' Southwest of this iron. Iron is 3" ± below the surface. No witnesses remain from Wampler's G.L.O. notes or from the Macomb County Road Commission records. Reestablished the NW corner of Grenal Subdivision No. 1 L. 54 P. 13 using irons found in said plat. Measure North to 1/2" rebar 325.79' (Rec. 325.79').

Measure North 2685.98' to I-7 (G.L.O. = 2640.0')  
 Measure South 2600.18' to I-9 (G.L.O. = 2640.0')

ACCEPTED BY THE MACOMB COUNTY SURVEY PEER GROUP AS THE OFFICIAL CORNER UNDER MICHIGAN PUBLIC ACT 345 OF 1990 AT A MEETING HELD ON 9-17-96

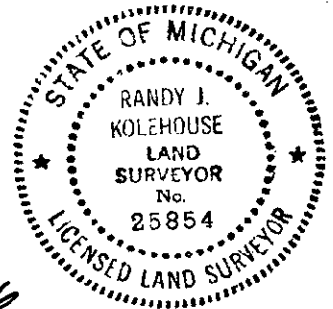
*William E. Soderberg*  
 WILLIAM E. SODERBERG, P.S., CHAIRMAN

Description of monument for corner and accessories established to perpetuate locating the position of the corner:

I replaced the 1/2" rebar with a 3/4" x 24" iron rod w/2" diameter aluminum cap stamped "Macomb County Monument MI Act 345 #25854." Also set a new monument box.

- N 30° E 74.65' - Found P.K. Nail in NW Face T. Pole
- S 40° E 45.31' - Found P.K. Nail in SW Face Utt. Pole
- S 42° W 45.85' - Found DH Nail w/Tag "#12022" in NW Face Utt. Pole
- N 26° W 50.38' - Found P.K. Nail in NE Face Guy Pole

The selected location is accepted by me and is generally accepted by professional surveyors as the best available evidence of the position of the original corner.



Recorded by Randy J. Kolehouse Date 11/19/96  
 Surveyor's Michigan License No. 25854