

LAND CORNER RECORDATION CERTIFICATE
 Filing Requirement of Act 74, Mich. P.A. 1970

For corners in

MACOMB (County)	Located in:	City of Sterling Heights	Corner Code #
1. Public Land Survey	T <u>2N</u>	R <u>12E</u>	<u>I-10</u>
	T _____	R _____	_____
	T _____	R _____	_____
	T _____	R _____	_____
2. Property Controlling in Section	S _____	T _____	R _____
	S _____	T _____	R _____
3. Miscellaneous Property in Sec.	S _____	T _____	R _____
	S _____	T _____	R _____

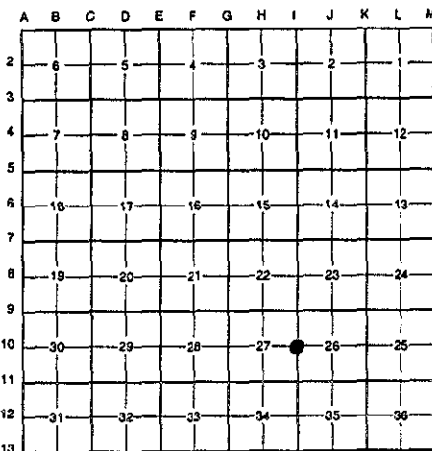
SURVEY &
 RE-MONUMENTATION

MAR 15 1999

SECTION

Register of Deeds Stamp & File Number

4. Lot No. _____, Recorded Plat _____
 5. Private Claims _____



I, Bruce Antcliff, in a field survey on July 19 98, do hereby certify that under requirements of P.A. 74 Michigan P.A. of 1970, the corner points mentioned in lines 1 and 2 above were in conformance with regulations and rules therefore as required in the current manual of survey instructions of the United States Department of the interior, Bureau of Land Management or by a decree of a Court of Law and/or that the corner points mentioned in lines 3, 4 and 5 above were in conformance with the rules of the Michigan Board of Land Surveyors or by a Decree of a Court of Law; established, re-established, monumented, re-monumented, recovered, found as expressed below:

NOTE: Not more than 4 corners, all in the same town and range, may be recorded on this certificate.

A. Description of original monument and accessories and/or subsequent restoration:

I-10	1817	G.L.O. Notes	Wampler	N/A	Post
	1926	Sterling Park Sub. L. 11, P. 47	Jerome	N/A	N/A
	1965	Sterling Knolls Sub. L. 55 P. 47	Lehner	#5787	N/A
	N/A	MCRC Witness File	N/A	N/A	3" Pipe Filled with Concrete
	1968	Francesca Sub. L. 59 P. 23	Lehner	#5787	N/A

B. Description of corner evidence found and/or method applied in restoring or reestablishing corner:

I-10 I found an empty monument box on the C/L of Dodge Park Road (conc.) running North and South on line of a fence line running East and West. No witnesses remain from the MCRC witness file. Established the C/L of Dodge Park Road using iron found along the East and West R/W line of said road. The found empty monument box is 0.74' East of this line. The C/L of empty monument box checks well North and South with all subdivisions. Held the location of the monument box North and South and set corner 0.74' West.

ACCEPTED BY THE MACOMB COUNTY SURVEY PEER GROUP AS THE OFFICIAL CORNER UNDER MICHIGAN PUBLIC ACT 345 OF 1990 AT A MEETING HELD ON 10/22/98
William E. Soderberg
 WILLIAM E. SODERBERG, P.S., CHAIRMAN

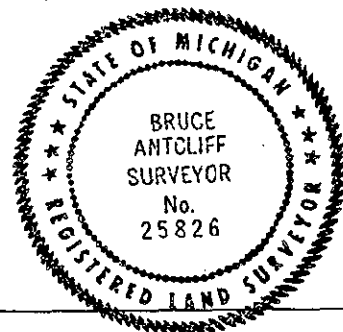
Measure North 2704.90' to I-9 (G.L.O. = 2640.0') (Francesca Sub. = 2704.72')
 Measure South 2685.06' to I-11 (G.L.O. = 2640.0') (Sterling Park Sub. = 2684.97')

C. Description of monument for corner and accessories established to perpetuate locating the position of the corner:

I-10 Removed existing monument box and set a 3/4" x 24" iron rod w/2" diameter aluminum cap stamped "Macomb County Monument MI Act 345 #25826." Also set a new monument box.

- S84°E 51.75' Set P.K. w/Macomb Remon Tag N. side utility pole
- S40°E 72.70' Set P.K. w/Macomb Remon Tag N. side utility pole
- S25°W 118.78' Center of top nut fire hydrant
- N86°W 36.92' Set P.K. w/Macomb Remon Tag N. side utility pole

The selected location is accepted by me and is generally accepted by professional surveyors as the best available evidence of the position of the original corner.



Signed by Bruce Antcliff Date 12-15-98
 EARTH TECH

Surveyor's Michigan License No. 25826

Handwritten initials

Handwritten number 803