

LAND CORNER RECORDATION CERTIFICATE
Filing Requirement of Act 74, Mich. P.A. 1970

**SURVEY &
REMONUMENTATION**

FEB 27 1997
COMMISSION

Register of Deeds Stamp & File Number

corners in

MACOMB
(County)

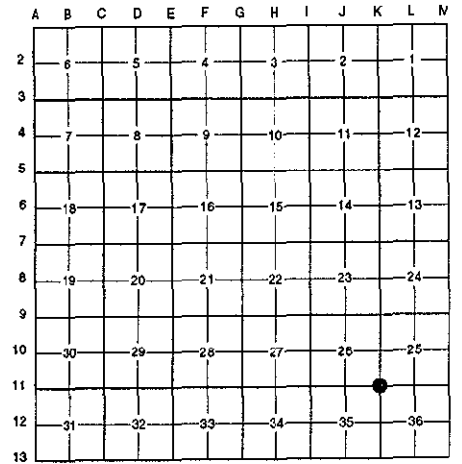
Located in: City of Sterling Heights Corner Code # _____

Public Land Survey	T <u>2N</u>	R <u>12E</u>	<u>K-11</u>
	T _____	R _____	_____
	T _____	R _____	_____
	T _____	R _____	_____
Property Controlling	S _____	T _____	R _____
in Section	S _____	T _____	R _____
Miscellaneous	S _____	T _____	R _____
Property in Sec.	S _____	T _____	R _____

Lot No. _____, Recorded Plat _____
Private Claims _____

Randy Kolehouse, in a field survey on April 23 19 96, hereby certify that under requirements of P.A. 74 Michigan P.A. of 1970, the corner points mentioned in lines 1 and 2 above were in conformance with regulations and rules therefore as required in the present manual of survey instructions of the United States Department of the Interior, Bureau of Land Management or by a decree of a Court of Law and/or that the corner points mentioned in lines 3, 4 and 5 above were in conformance with the rules of the Michigan Board of Land Surveyors or by a Decree of a Court of Law; established, re-established, monumented, re-monumented, recovered, found as pressed below:

NOTE: Not more than 4 corners, all in the same town and range, may be recorded on this certificate.



Description of original monument and accessories and/or subsequent restoration:

11	1817	G.L.O. Notes	Wampler	N/A	Set Post
	1928	MCRC File No. 11	N/A	N/A	"+" in Concrete
	1995	L.C.R.C. L. 06679 P. 620	Higgins	#21570	1/2" Rebar in Mon. Box

Description of corner evidence found and/or method applied in restoring or reestablishing corner:

11 I found a 1/2" rebar in a monument box at the C/L intersection of 15 Mile Road (conc.) running East and West and Schoenherr Road (conc.) running North and South which checks with witnesses listed below. No witnesses remain from Wampler's G.L.O. notes or from the 1928 Macomb County Road Commission records.

- L.C.R.C. L. 06679 P. 620
- S 39° E 66.06 "+" Cut in NW Side of Metal Signal Pole Base (m. 66.05')
- S 86° W 70.78 "+" Cut in N Side Concrete Base of Traffic Signal (m. 70.76')
- N 40° W 78.87 "+" Cut in SE Rim of MBT Manhole (m. 78.86')

Measure North 2722.11' to K-10 (G.L.O. = 2640.0')
Measure East 2594.53' to L-11 (G.L.O. = 2574.0') (H.R.C. = 2592.67')

ACCEPTED BY THE MACOMB COUNTY SURVEY PEER GROUP AS THE OFFICIAL CORNER UNDER MICHIGAN PUBLIC ACT 345 OF 1990 AT A MEETING HELD ON 9-17-95
William E. Soderberg
WILLIAM E. SODERBERG, P.S., CHAIRMAN

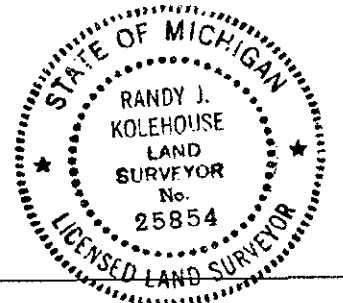
Description of monument for corner and accessories established to perpetuate locating the position of the corner:

11 I replaced the found 1/2" rebar with a 3/4" x 24" iron rod w/2" diameter aluminum cap stamped "Macomb County Monument MI Act 345 #25854" in an existing monument box.

- N 68° E 107.62' - Set Nail and Macomb Co. Remon. Tag in W Face P. Pole
- S 37° E 66.05' - Found "+" in NW Base Signal Pole
- S 48° W 70.76' - Found "+" in NW Side Signal Pole Base
- N 35° W 66.65' - Set Nail and Macomb Co. Remon. Tag in SW Face P. Pole

The selected location is accepted by me and is generally accepted by professional surveyors as the best available evidence of the position of the original corner.

Surveyed by Randy J. Kolehouse Date 11/19/96
Surveyor's Michigan License No. 25854



645