

**SURVEY &
REMONUMENTATION**

FEB 27 1997

COMMISSION

LAND CORNER RECORDATION CERTIFICATE
Filing Requirement of Act 74, Mich. P.A. 1970

For corners in

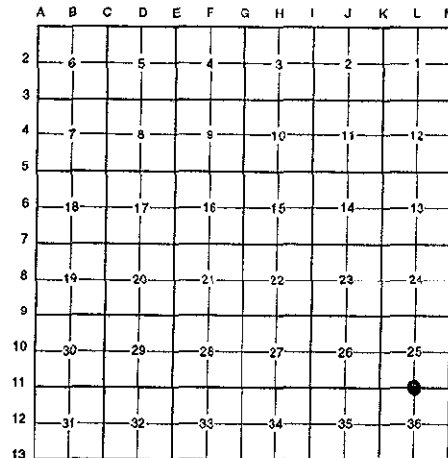
<u>MACOMB</u> (County)	Located in:	City of Sterling Heights	Corner Code #
Public Land Survey	T <u>2N</u>	R <u>12E</u>	<u>L-11</u>
	T _____	R _____	_____
	T _____	R _____	_____
	T _____	R _____	_____
Property Controlling in Section	S _____	T _____	R _____
Miscellaneous Property in Sec.	S _____	T _____	R _____

ACCEPTED BY THE MACOMB COUNTY SURVEY PEER GROUP AS THE OFFICIAL CORNER UNDER MICHIGAN PUBLIC ACT 345 OF 1990 AT A MEETING HELD ON 10-22-96.
William E. Soderberg
WILLIAM E. SODERBERG, P.S., CHAIRMAN
Register of Deeds Stamp & File Number

Lot No. _____, Recorded Plat _____
Private Claims _____

Randy Kolehouse, in a field survey on April 23 19 96, hereby certify that under requirements of P.A. 74 Michigan P.A. of 1970, the corner points mentioned in lines 1 and 2 above were in conformance with regulations and rules therefore as required in the current manual of survey instructions of the United States Department of the Interior, Bureau of Land Management or by a decree of a Court of Law and/or that the corner points mentioned in lines 3, 4 and 5 above were in conformance with the rules of the Michigan Board of Land Surveyors or by a Decree of a Court of Law; established, re-established, monumented, re-monumented, recovered, found as expressed below:

NOTE: Not more than 4 corners, all in the same town and range, may be recorded on this certificate.



Description of original monument and accessories and/or subsequent restoration:

11	1817	G.L.O. Notes	Wampler	N/A	Set Post
	1928	MCRC File No. 12	N/A	N/A	Nail in Concrete Pavement
	1974	L.C.R.C. L. 2505 P. 362	Patterson	#17631	Set P.K. Nail
	1992	L.C.R.C. L. 5304 P. 557	Newman	#24607	P.K. Nail
	1995	L.C.R.C. L. 06679 P. 620	Higgins	#21570	P.K. Nail

Description of corner evidence found and/or method applied in restoring or reestablishing corner:

11 15 Mile Road currently under construction and P.K. nail has been removed as part of repaving. Found a 7/8" bar on the C/L of 15 Mile Road 200' ± West of Moravian approximately 6" below the surface. This iron falls 1.76' ± East of the position of the P.K. nail as reconstructed from witnesses using L.C.R.C.'s shown above. No witnesses remain from Wampler's G.L.O. notes or from the 1928 Macomb County Road Commission records. Reestablished the SE corner of Moravian Village Subdivision L. 61 P. 34 using irons found along the Easterly and Westerly R/W lines of Cathedrals Drive (60' wide). Measure East from this point 999.02' to 7/8" solid iron (R. 999.71'). Reconstructed Kinsley Subdivision L. 55 P. 36 from iron found and calculated the location of L-11 as used in this subdivision to be 0.9' ± West of the 7/8" solid iron. Reestablished the NW corner of Moravian Pointe Subdivision L. 91 P. 23 using irons and monuments found along the East and West R/W lines of Morningdale Drive (60' wide). Measure 764.67' to the 7/8" iron (R. 766.66') and 766.43' to the location of the PK nail per L.C.R.C. L. 2505 P. 362 (R. 766.66'). Because the earlier Subdivision used the 7/8" solid iron, decided to hold the location of the 7/8" iron.

Measure West 2594.53" to K-11 (G.L.O. = 2574.0') (Const. Plans = 2592.67')
Measure East 2663.48' to M-11 (G.L.O. = 2574.0') (Const. Plans = 2665.17')

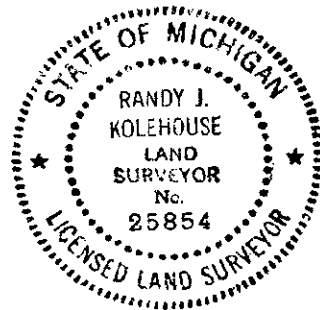
Description of monument for corner and accessories established to perpetuate locating the position of the corner:

1 I replaced the 7/8" iron with a 3/4" x 24" iron rod w/2" diameter aluminum cap stamped "Macomb County Monument MI Act 345 #25854." Also set a new monument box.

- N 41° E 84.97' - "+" South Rim Sanitary Manhole
- N 70° E 113.19' - C/L Top Nut Hydrant
- N 65° E 145.60' - Found PK Nail in SW Face P. Pole
- S 46° W 55.75' - Found PK Nail in N Face P. Pole
- S 53° W 122.72' - C/L Top Nut Hydrant
- S 57° W 90.14' - Set PK w/M.C. Tag NW Face Guy Pole
- N 49° W 84.81' - Found PK Nail in SE Face P. Pole
- N 45° W 102.95' - "+" South Rim Sanitary Manhole

The selected location is accepted by me and is generally accepted by professional surveyors as the best available evidence of the position of the original corner.

Recorded by Randy J. Kolehouse Date 11/19/96
Surveyor's Michigan License No. 25854



647