

LAND CORNER RECORDATION CERTIFICATE
 Filing Requirement of Act 74, Mich. P.A. 1970

For corners in

<u>MACOMB</u> (County)	Located in: Shelby Township	Corner Code #
1. Public Land Survey	T <u>3N</u> R <u>12E</u>	<u>I-13</u>
	T _____ R _____	_____
	T _____ R _____	_____
	T _____ R _____	_____
2. Property Controlling in Section	S _____ T _____ R _____	_____
	S _____ T _____ R _____	_____
3. Miscellaneous Property in Sec.	S _____ T _____ R _____	_____
	S _____ T _____ R _____	_____
4. Lot No. _____, Recorded Plat _____		
5. Private Claims _____		

SURVEY & REMONUMENTATION

APR 07 1998

ACCEPTED BY THE MACOMB COUNTY SURVEY PEER GROUP AS THE OFFICIAL CORNER UNDER MICHIGAN PUBLIC ACT 366 T1001 AT A MEETING HELD ON 11/14/97

William E. Soderberg
 WILLIAM E. SODERBERG, P.S., CHAIRMAN
 Register of Deeds Stamp & File Number

I, Randy Kolehouse, in a field survey on September 17 19 97, do hereby certify that under requirements of P.A. 74 Michigan P.A. of 1970, the corner points mentioned in lines 1 and 2 above were in conformance with regulations and rules therefore as required in the current manual of survey instructions of the United States Department of the Interior, Bureau of Land Management or by a decree of a Court of Law and/or that the corner points mentioned in lines 3, 4 and 5 above were in conformance with the rules of the Michigan Board of Land Surveyors or by a Decree of a Court of Law; established, re-established, monumented, re-monumented, recovered, found as expressed below:

NOTE: Not more than 4 corners, all in the same town and range, may be recorded on this certificate.

A. Description of original monument and accessories and/or subsequent restoration:

I-13 Records indicate this corner is common with I-1, T2N, R12E.

1817	G.L.O. Notes	Wampler	N/A	Post
1957-62	MDOT Road Plans	N/A	N/A	N/A
1963	MCRC Wit. File No. 161	Leser	N/A	Monument Box
1972	L.C.R.C. L. 2293 P. 268	Kobs	#14097	Monument Box
1988	L.C.R.C. L. 4507 P. 850	Spencer	#13044	Iron in Mon. Box (I-1, T2N, R12E)
N/A	M.C. Tax Maps	N/A	N/A	N/A

B. Description of corner evidence found and/or method applied in restoring or reestablishing corner:

I-13 The M-59 bridge over M-53 has been rebuilt and the monument box in the bridge deck and all witness from L.C.R.C. L. 2293 P. 268 have been removed. Found a monument box (full of concrete) in the northbound lane of M-53 as illustrated in MDOT Highway Plans for M-53. (This box was directly under the monument box in the M-59 bridge.) All witnesses from L.C.R.C. L. 4507 P. 850 are gone. Accepted monument box as the corner.

Measure South 3287.56' to I-2, T2N, R12E (G.L.O. = 3417.5')

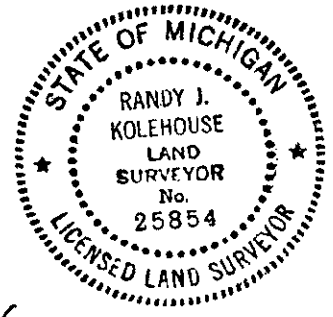
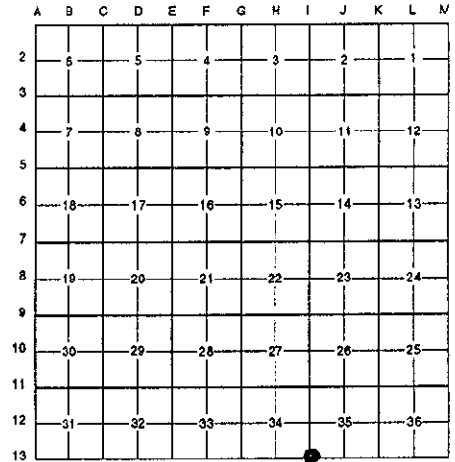
C. Description of monument for corner and accessories established to perpetuate locating the position of the corner:

I-13 C/L of an existing monument box.

- N 37° E 72.57' - Found "+" in Station 21+00 East Edge Northbound M-53 Pavement
- N 53° E 77.93' - Set P.K. Nail & Macomb Co. Remon. Tag in Concrete
- S 32° E 47.89' - Set P.K. Nail & Macomb Co. Remon. Tag in Concrete
- S 51° E 60.95' - Found "+" in Station 20+00 East Edge Northbound M-53 Pavement
- S 67° W 44.60' - Found SE Face S'ly Concrete Pillar M-59 Bridge
- N 24° W 66.91' - Found NE Face N'ly Concrete Pillar M-59 Bridge

The selected location is accepted by me and is generally accepted by professional surveyors as the best available evidence of the position of the original corner.

Signed by Randy J. Kolehouse Date 11/14/97
 Surveyor's Michigan License No. 25854



740