

SURVEY & REMONUMENTATION

APR 28 1995

LAND CORNER RECORDATION CERTIFICATE Filing Requirement of Act 74, Mich. P.A. 1970

C150769

COMMISSION

For corners in Macomb

Macomb Twp.

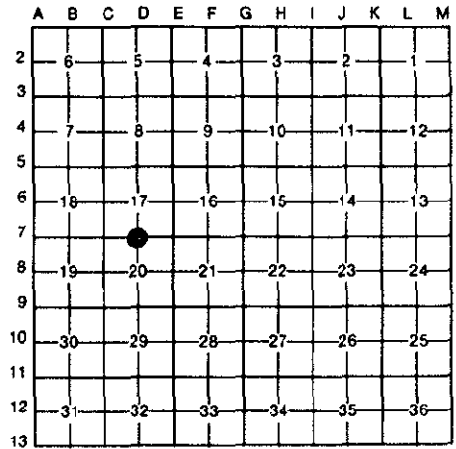
		Located In:		Corner Code #	
	(County)				
		3N	13E	D-7	
1. Public Land Survey		T	R		
		T	R		
		T	R		
		T	R		
2. Property Controlling in Section	S	T	R		
	S	T	R		
3. Miscellaneous Property in Sec.	S	T	R		
	S	T	R		
4. Lot No. _____, Recorded Plat _____					
5. Private Claims _____					

LIBER 6523 PAGE 916
94 DEC -9 PM 2:48
CARL L. GAUSH
REGISTER OF DEEDS
MACOMB COUNTY, MI

Register of Deeds Stamp & File Number

Robert D. Kohn August 15 94

I, _____, in a field survey on _____, 19____, do hereby certify that under requirements of P.A. 74, Michigan P.A. of 1970, the corner points mentioned in lines 1 and 2 above were in conformance with regulations and rules therefore as required in the current manual of survey instructions of the United States Department of the Interior, Bureau of Land Management or by a decree of a Court of Law and/or that the corner points mentioned in lines 3, 4 and 5 above were in conformance with the rules of the Michigan Board of Land Surveyors or by a Decree of a Court of Law; established, re-established, monumented, re-monumented, recovered, found as expressed below:



NOTE: Not more than 4 corners, all in the same town and range, may be recorded on this certificate.

A. Description of original monument and accessories and/or subsequent restoration:

1817	Set post	G.L.O.	W. Preston	N/A	Notes
1973	1/2" Iron bar	L.C.R.C.	H. Kobs	#14097	L2370 P409
1979	n/a	Survey	R. Smith	#16052	L3168 P965
1980	Iron	Survey	W. Soderberg	#17635	L3263 P916
1986	1/2" Iron bar	L.C.R.C.	W. Avey	#30076	L4080 P893

B. Description of corner evidence found and/or method applied in restoring or reestablishing corner:

A 1/2" iron rod in asphalt pavement currently marks this corner. The following witness ties were used to recover and verify its position:
2 ties from L.C.R.C. L4080 P893

Field measurements were made between the following corners:

C-7 to D-7	2672.61	meas.	G.L.O.	Notes	2647.92
	2672.63	rec.	L3263 P916	Survey	
D-7 to E-7	2672.69	meas.	G.L.O.	Notes	2647.26
	2673.57	rec.	L3168 P965	Survey	
	2672.66	rec.	L4080 P893	L.C.R.C.	

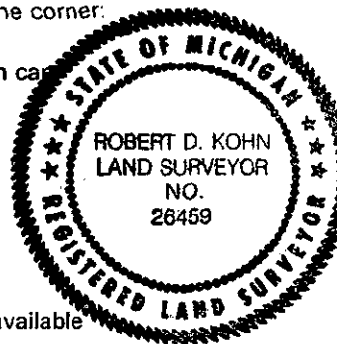
ACCEPTED BY THE MACOMB COUNTY SURVEY PEER GROUP AS THE OFFICIAL CORNER UNDER MICHIGAN PUBLIC ACT 345 OF 1990 AT A MEETING HELD ON 9-27-94

William E. Soderberg
WILLIAM E. SODERBERG, P.S., CHAIRMAN

C. Description of monument for corner and accessories established to perpetuate locating the position of the corner:

I replaced the 1/2" iron in asphalt pavement with a 3/4" x 24" iron rod with 2" diameter aluminum cap stamped "Macomb County Monument MI Act 345 #26459" and a new monument box.

N.02° E.	36.14'	Set P.K. and remon. washer E. face U-pole
S.59° E.	63.46'	Set P.K. and remon. washer in top of curb at expansion joint
S.74° W.	117.65'	Set P.K. and remon. washer in top of curb at return
N.35° W.	65.01'	Chiseled "+" in north rim of manhole



The selected location is accepted by me and generally accepted by Professional Surveyors as the best available evidence of the position of the original corner.

Signed by Robert D. Kohn Date November 9, 1994
Surveyor's Michigan License No. 26459