

**SURVEY & REMONUMENTATION**

APR 28 1995

**COMMISSION**

**LAND CORNER RECORDATION CERTIFICATE**  
**Filing Requirement of Act 74, Mich. P.A. 1970**  
**Macomb Twp.**

C150770

94 DEC -9 PM 2:48

CAROL A. GAUGH  
 REGISTER OF DEEDS  
 MACOMB COUNTY, MI

For corners in Macomb

(County)

Located In: Corner Code #

	3N	13E	D-11
1. Public Land Survey	T	R	
	T	R	
	T	R	
	T	R	
2. Property Controlling in Section	S	T	R
	S	T	R
3. Miscellaneous Property in Sec.	S	T	R
	S	T	R

LIBER 6523 PAGE 917

Register of Deeds Stamp & File Number

4. Lot No. \_\_\_\_\_, Recorded Plat \_\_\_\_\_  
 5. Private Claims \_\_\_\_\_

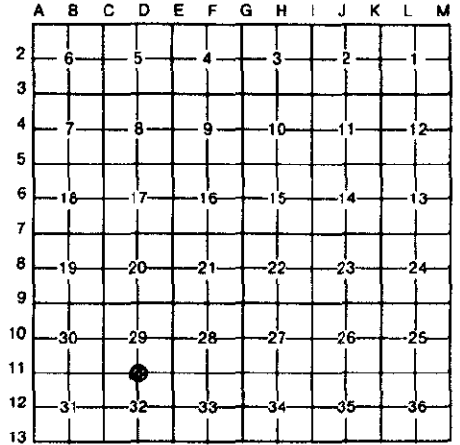
Robert D. Kohn

July 22

94

I, \_\_\_\_\_, in a field survey on \_\_\_\_\_, 19 \_\_\_\_\_, do hereby certify that under requirements of P.A. 74, Michigan P.A. of 1970, the corner points mentioned in lines 1 and 2 above were in conformance with regulations and rules therefore as required in the current manual of survey instructions of the United States Department of the Interior, Bureau of Land Management or by a decree of a Court of Law and/or that the corner points mentioned in lines 3, 4 and 5 above were in conformance with the rules of the Michigan Board of Land Surveyors or by a Decree of a Court of Law; established, re-established, monumented, re-monumented, recovered, found as expressed below:

**NOTE: Not more than 4 corners, all in the same town and range, may be recorded on this certificate.**



A. Description of original monument and accessories and/or subsequent restoration:

Date	Description	Surveyor	Accessories	Notes
1817	Set post	G.L.O.	W. Preston	N/A
1972	1/2" Iron	L.C.R.C.	G. Avendt, Jr.	#16034
1975	1/2" Iron bar	L.C.R.C.	H. Kobs	#14097
1975	1/2" Iron bar	Survey	H. Kobs	#14097
1977	1/2" Iron	L.C.R.C.	W. Soderberg	#17635
1977	Iron	Survey	W. Soderberg	#17635
1978	1/2" Re-rod	L.C.R.C.	R. Patterson	#17631

B. Description of corner evidence found and/or method applied in restoring or reestablishing corner:

A 1/2" iron rod in a monument box in asphalt pavement marks this corner. The following witness ties were used to recover and verify its position:

- 1 tie from L.C.R.C. L2302 P902
- 3 ties from L.C.R.C. L2640 P939
- 2 ties from L.C.R.C. L2844 P958
- 3 ties from L.C.R.C. L2940 P351

Field measurements were made between the following corners:

C-11 to D-11	2676.66	meas.		
	2646.6	rec.	G.L.O.	
	2676.44	rec.	L83 P11	Plats
	2676.73	rec.	L3031 P738	Survey
D-11 to E-11	2679.87	meas.		
	2646.6	rec.	G.L.O.	
	2679.76	rec.	L70 P37-38	Plats
	2679.56	rec.	L2640 P930	Survey

ACCEPTED BY THE MACOMB COUNTY SURVEY PEER GROUP AS THE OFFICIAL CORNER UNDER MICHIGAN PUBLIC ACT 345 OF 1990 AT A MEETING HELD ON 9-27-94

*William E. Soderberg*  
 WILLIAM E. SODERBERG, P.S., CHAIRMAN

C. Description of monument for corner and accessories established to perpetuate locating the position of the corner:

I replaced the 1/2" rod with a 3/4"x 24" iron rod with a 2" diameter aluminum cap stamped "Macomb County Monument MI Act 345 #26459" in an existing monument box in asphalt pavement.

N.82° E.	174.56'	Center top of a fire hydrant
S.02° E.	80.97'	P.K. & remon. tag in the west face of a U-pole
S.79° W.	163.19'	P.K. and remon. washer at top of curb for island
N.67° W.	83.47'	P.K. and remon. tag in the N. face of a guy pole

The selected location is accepted by me and generally accepted by Professional Surveyors as the best available evidence of the position of the original corner.

Signed by *Robert D. Kohn*

Date November 9, 1994

Surveyor's Michigan License No. 26459

