

SURVEY & REMONUMENTATION

APR 28 1995

COMMISSION

LAND CORNER RECORDATION CERTIFICATE

Filing Requirement of Act 74, Mich. P.A. 1970

For corners in _____
Macomb
(County)

Macomb Twp.

C150774

Located In: _____ Corner Code # _____

LIBER 6523 PAGE 921

94 DEC -9 PM 2:48

CARMEL S. BAUGH
REGISTER OF DEEDS
MACOMB COUNTY, MI

Register of Deeds Stamp & File Number

		3N	13E	E-6	
1. Public Land Survey	T	_____	R	_____	_____
	T	_____	R	_____	_____
	T	_____	R	_____	_____
	T	_____	R	_____	<i>Seg-1</i>
2. Property Controlling in Section	S	_____	T	_____	_____
	S	_____	T	_____	_____
3. Miscellaneous Property in Sec.	S	_____	T	_____	_____
	S	_____	T	_____	_____

4. Lot No. _____, Recorded Plat _____
5. Private Claims _____

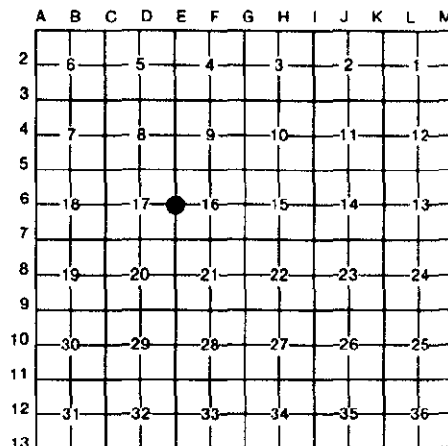
Robert D. Kohn

September 19

94

I, _____, in a field survey on _____, 19____, do hereby certify that under requirements of P.A. 74, Michigan P.A. of 1970, the corner points mentioned in lines 1 and 2 above were in conformance with regulations and rules therefore as required in the current manual of survey instructions of the United States Department of the Interior, Bureau of Land Management or by a decree of a Court of Law and/or that the corner points mentioned in lines 3, 4 and 5 above were in conformance with the rules of the Michigan Board of Land Surveyors or by a Decree of a Court of Law; established, re-established, monumented, re-monumented, recovered, found as expressed below:

NOTE: Not more than 4 corners, all in the same town and range, may be recorded on this certificate.



A. Description of original monument and accessories and/or subsequent restoration:

1817 4" Beech	G.L.O.	W. Preston	N/A	Notes
1972 5/8" Iron	L.C.R.C.	H. Kobs	#14097	L2332 P295
1972 5/8" Iron	Survey	H. Kobs	#14097	L2332 P277
1976 5/8" Iron bar	Survey	H. Kobs	#14097	L2762 P23
1989 5/8" Iron	L.C.R.C.	R. Stecker	#30103	L4602 P725

B. Description of corner evidence found and/or method applied in restoring or reestablishing corner:

^{5/8"}
A 1/2" iron rod in a field currently marks this corner.
No accessories existing from L.C.R.C. to-date.

Field measurements were made between the following corners:

E-6 to E-5	2679.45	meas.		
	2640	rec.	G.L.O.	
	2679.78	rec.	L2332 P277	Survey
E-6 to E-7	2688.34	meas.		
	2640	rec.	G.L.O.	
	2688.01	rec.	A.E.W. #095-242	Survey

A 1/2" iron rod in a field currently occupies this corner.

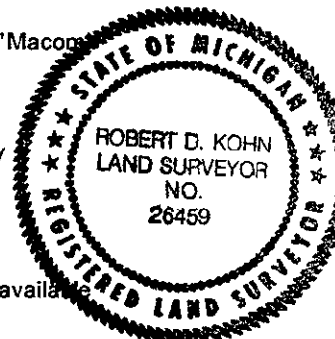
ACCEPTED BY THE MACOMB COUNTY SURVEY PEER GROUP AS THE OFFICIAL CORNER UNDER MICHIGAN PUBLIC ACT 345 OF 1990 AT A MEETING HELD ON 10-18-94

William E. Soderberg
WILLIAM E. SODERBERG, P.S., CHAIRMAN

C. Description of monument for corner and accessories established to perpetuate locating the position of the corner:

I replaced the 5/8" iron rod with a 3/4" x 24" iron rod with 2" diameter aluminum cap stamped "Macomb County Monument MI Act 345 #26459".

N.40° E.	14.19'	Set nail and Macomb Co. remon washer in S.E. face clump Cherry
N.81° E.	14.90'	Set nail and Macomb Co. remon washer in N. face Twin 18" Cherry
S.35° E.	4.09'	Set nail and Macomb Co. remon washer in N.E. face 16" Box Elder
N.87° W.	25.74'	Set nail and Macomb Co. remon washer in N. face 6" Ash



The selected location is accepted by me and generally accepted by Professional Surveyors as the best available evidence of the position of the original corner.

Signed by *Robert D. Kohn* Date NOVEMBER 9, 1994
Surveyor's Michigan License No. 26459