

# SURVEY & REMONUMENTATION

APR 28 1995

C150776

## COMMISSION

### LAND CORNER RECORDATION CERTIFICATE

Filing Requirement of Act 74, Mich. P.A. 1970

For corners in Macomb

Macomb Twp.

LIBER 6523 PAGE 923

94 DEC -9 PM 2:48

CARMEL S. SGAUGH  
REGISTER OF DEEDS  
MACOMB COUNTY, MI

Register of Deeds Stamp & File Number

	Located In:		Corner Code #
	3N	13E	
1. Public Land Survey	T _____ R _____	_____ E-8	_____
	T _____ R _____	_____	_____
	T _____ R _____	_____	_____
	T _____ R _____	_____	_____
2. Property Controlling in Section	S _____ T _____ R _____	_____	_____
	S _____ T _____ R _____	_____	_____
3. Miscellaneous Property in Sec.	S _____ T _____ R _____	_____	_____
	S _____ T _____ R _____	_____	_____

4. Lot No. \_\_\_\_\_, Recorded Plat \_\_\_\_\_  
5. Private Claims \_\_\_\_\_

Robert D. Kohn

September 22

94

I, \_\_\_\_\_, in a field survey on \_\_\_\_\_, 19 \_\_\_\_\_, do hereby certify that under requirements of P.A. 74, Michigan P.A. of 1970, the corner points mentioned in lines 1 and 2 above were in conformance with regulations and rules therefore as required in the current manual of survey instructions of the United States Department of the Interior, Bureau of Land Management or by a decree of a Court of Law and/or that the corner points mentioned in lines 3, 4 and 5 above were in conformance with the rules of the Michigan Board of Land Surveyors or by a Decree of a Court of Law; established, re-established, monumented, re-monumented, recovered, found as expressed below:

**NOTE: Not more than 4 corners, all in the same town and range, may be recorded on this certificate.**

**A. Description of original monument and accessories and/or subsequent restoration:**

Date	Description	Surveyor	Notes
1817	Post	G.L.O. W. Preston	N/A
1973	1/2" Pipe	L.C.R.C. H. Kobs	#14097 L2393 P615
1973	1/2" Pipe	Survey H. Kobs	#14097 L2393 P602
1979	Re-set iron from recorded ties	Survey R. Smith	#16052 L3184 P663
1991	1/2" Bar	Survey W. Avey	#30076 L5063 P828
1991	1/2" Pipe	Survey H. Kobs	#14097 L5300 P223

**B. Description of corner evidence found and/or method applied in restoring or reestablishing corner:**

A concrete monument in a field currently marks this corner. No accessories existing from previously recorded L.C.R.C.

Field measurements were made between the following corners:

From	To	Measurement	Method	Notes
E-8 to E-7	2661.17	meas.		
	2640	rec.	G.L.O.	
	2661.10	rec.	L103 P6	Plats
	2661.10	rec.	N/A	A.E.W. section breakdown
E-8 to E-9	2675.01	meas.		
	2640	rec.	G.L.O.	
	2675.07	rec.	N/A	A.E.W. section breakdown

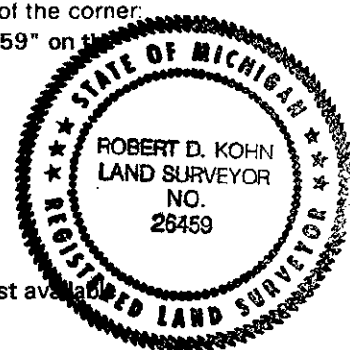
ACCEPTED BY THE MACOMB COUNTY SURVEY PEER GROUP AS THE OFFICIAL CORNER UNDER MICHIGAN PUBLIC ACT 345 OF 1990 AT A MEETING HELD ON 10-18-94

*William E. Soderberg*  
WILLIAM E. SODERBERG, P.S., CHAIRMAN

**C. Description of monument for corner and accessories established to perpetuate locating the position of the corner:**

I placed a 2" diameter aluminum cap stamped "Macomb County Monument MI Act 345 #26459" on the existing monument.

N.36° E.	62.62'	Concrete monument.
N.01° E.	4.65'	Set P.K. nail and Macomb Co. remon. tag in W. face fence post
N.41° E.	57.59'	Set P.K. nail and Macomb Co. remon. tag in E. face twin 8" tree
N.52° E.	48.75'	Set P.K. nail and Macomb Co. remon. tag in E. face Thorn Apple



The selected location is accepted by me and generally accepted by Professional Surveyors as the best available evidence of the position of the original corner.

Signed by Robert D. Kohn Date November 9, 1994  
Surveyor's Michigan License No. 26459