

SURVEY & REMONUMENTATION

APR 28 1995

COMMISSION

LAND CORNER RECORDATION CERTIFICATE
Filing Requirement of Act 74, Mich. P.A. 1970

C150787

For corners in Macomb
 (County)

Macomb Twp.

Located In: Corner Code #

3N 13E G-6

| | | | |
|------------------------------------|---|---|---|
| 1. Public Land Survey | T | R | |
| | T | R | |
| | T | R | |
| | T | R | |
| 2. Property Controlling in Section | S | T | R |
| | S | T | R |
| 3. Miscellaneous Property in Sec. | S | T | R |
| | S | T | R |

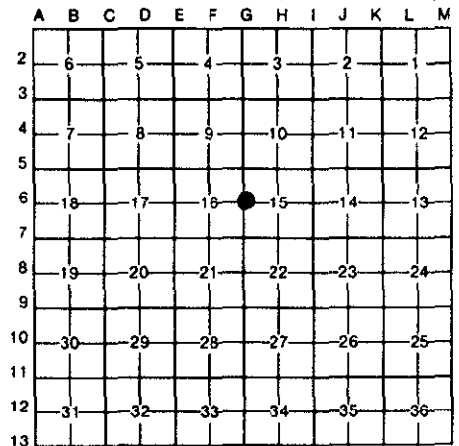
LIBER **6523** PAGE **934**
 94 DEC -9 PM 2:49
 CARMEL L. SABAUGH
 REGISTER OF DEEDS
 MACOMB COUNTY, MI

Register of Deeds Stamp & File Number

4. Lot No. _____, Recorded Plat _____
 5. Private Claims _____

Robert D. Kohn September 26 94

I, _____, in a field survey on _____, 19 _____, do hereby certify that under requirements of P.A. 74, Michigan P.A. of 1970, the corner points mentioned in lines 1 and 2 above were in conformance with regulations and rules therefore as required in the current manual of survey instructions of the United States Department of the Interior, Bureau of Land Management or by a decree of a Court of Law and/or that the corner points mentioned in lines 3, 4 and 5 above were in conformance with the rules of the Michigan Board of Land Surveyors or by a Decree of a Court of Law; established, re-established, monumented, re-monumented, recovered, found as expressed below:



NOTE: Not more than 4 corners, all in the same town and range, may be recorded on this certificate.

A. Description of original monument and accessories and/or subsequent restoration:

| | | | | | Notes |
|------|---------------|----------|--------------|--------|------------|
| 1817 | 6" Ironwood | G.L.O. | W. Preston | N/A | |
| 1977 | 1/2" Iron bar | L.C.R.C. | H. Kobs | #14097 | L2923 P873 |
| 1978 | 1/2" Iron bar | Survey | H. Kobs | #14097 | L2923 P850 |
| 1984 | 1/2" Iron Bar | Survey | H. Kobs | #14097 | L3705 P121 |
| 1986 | 1/2" Iron Bar | Survey | H. Kobs | #14097 | L4220 P451 |
| 1989 | Concrete mon. | L.C.R.C. | R. Stecker | #30103 | L4602 P724 |
| 1994 | Concrete mon. | Survey | W. Soderberg | #17635 | L6281 P168 |

B. Description of corner evidence found and/or method applied in restoring or reestablishing corner:

A concrete monument still marks this corner. The following witness ties were used to recover and verify its position.

3 ties from L.C.R.C. L2923 P873
 3 ties from L.C.R.C. L4602 P724

Field measurements were made between the following corners:

| | | | | |
|------------|---------|--------|------------|---------------------|
| G-5 to G-6 | 2669.96 | meas. | | |
| | 2640 | G.L.O. | Notes | |
| | 2669.80 | rec. | L2923 P850 | Survey |
| G-6 to G-7 | 2692.28 | meas. | | |
| | 2640 | G.L.O. | Notes | |
| | 2692.09 | rec. | L3705 P121 | Survey |
| | 2692.09 | rec. | L4220 P451 | Survey |
| | 2692.28 | rec. | L6281 P168 | Survey |
| | | | | Through calculation |

ACCEPTED BY THE MACOMB COUNTY SURVEY PEER GROUP AS THE OFFICIAL CORNER UNDER MICHIGAN PUBLIC ACT 345 OF 1990 AT A MEETING HELD ON 9-27-94

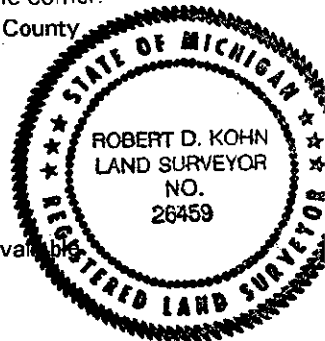
 WILLIAM E. SODERBERG, P.S., CHAIRMAN

C. Description of monument for corner and accessories established to perpetuate locating the position of the corner:

I left the concrete monument in place and placed a 2" diameter aluminum cap stamped "Macomb County Monument, Michigan Act 345 #26459" over iron rod.

| | | |
|----------|--------|--|
| N.17° E. | 32.37' | Monitor well |
| N.22° E. | 12.06' | Set P.K. nail & remon. tag in triple 12' Ash |
| N.87° E. | 14.67' | Set P.K. nail & remon. tag in N. face of a 10" Ash |
| S.01° W. | 18.93' | Set P.K. nail & remon. tag in E. face of Thorn Apple |

The selected location is accepted by me and generally accepted by Professional Surveyors as the best available evidence of the position of the original corner.



Signed by Robert D. Kohn
 Surveyor's Michigan License No. 26459

Date November 9, 1994