

**SURVEY & REMONUMENTATION**

APR 28 1995

**COMMISSION**

**LAND CORNER RECORDATION CERTIFICATE**  
**Filing Requirement of Act 74, Mich. P.A. 1970**

**C150792**

For corners in Macomb

Macomb Twp.

LIBER **6523** PAGE **939**

94 DEC -9 PM 2:49

CAROL ANN BAUGH  
 REGISTER OF DEEDS  
 MACOMB COUNTY, MI

Register of Deeds Stamp & File Number

	Located In:		Corner Code #
	3N	13E	
1. Public Land Survey	T	R	H-7
	T	R	
	T	R	
	T	R	
2. Property Controlling in Section	S	T	R
	S	T	R
3. Miscellaneous Property in Sec.	S	T	R
	S	T	R

4. Lot No. \_\_\_\_\_, Recorded Plat \_\_\_\_\_  
 5. Private Claims \_\_\_\_\_

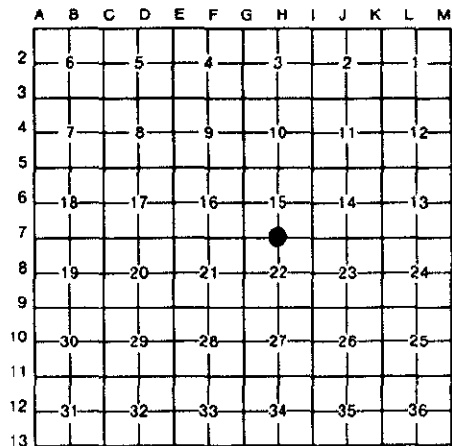
Robert D. Kohn

July 20

94

I, \_\_\_\_\_, in a field survey on \_\_\_\_\_, 19 \_\_\_\_\_, do hereby certify that under requirements of P.A. 74, Michigan P.A. of 1970, the corner points mentioned in lines 1 and 2 above were in conformance with regulations and rules therefore as required in the current manual of survey instructions of the United States Department of the Interior, Bureau of Land Management or by a decree of a Court of Law and/or that the corner points mentioned in lines 3, 4 and 5 above were in conformance with the rules of the Michigan Board of Land Surveyors or by a Decree of a Court of Law; established, re-established, monumented, re-monumented, recovered, found as expressed below:

**NOTE: Not more than 4 corners, all in the same town and range, may be recorded on this certificate.**



**A. Description of original monument and accessories and/or subsequent restoration:**

Date	Description	G.L.O.	W. Preston	N/A	Notes
1817	Post				
1954	1/2" R.R. in monument box	M.C.R.C.	N/A	N/A	File 84
1979	1/2" R.R. in monument box	L.C.R.C.	J. Fenn	#23505	L3168 P259
1984	1/2" R.R. in monument box	L.C.R.C.	H. Kob	#14097	L3705 P144
1984	1/2" Bar in monument box	Survey	H. Kob	#14097	L3705 P121

**B. Description of corner evidence found and/or method applied in restoring or reestablishing corner:**

A 1/2" re-rod in a monument box in an asphalt road currently marks this corner. The following witness ties were used to recover and verify its position:  
 2 ties from L.C.R.C. L3705 P144  
 3 ties from L.C.R.C. L3168 P259

Field measurements were made between the following corners:  
 G-7 to H-7

2676.65 meas.  
 2635.38 rec. G.L.O.  
 2676.53 rec. Survey

H-7 to I-7

2666.19 meas.  
 2634.72 rec. G.L.O.  
 2666.23 rec. A.E.W.  
 2665.67 rec. A.E.W.

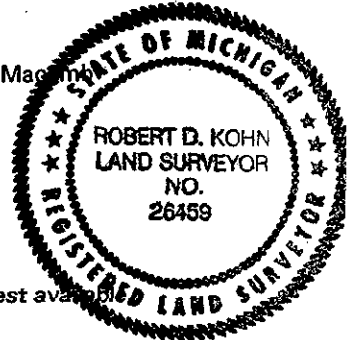
ACCEPTED BY THE MACOMB COUNTY SURVEY PEER GROUP AS THE OFFICIAL CORNER UNDER MICHIGAN PUBLIC ACT 345 OF 1990 AT A MEETING HELD ON 9-27-94  
 WILLIAM E. SODERBERG, P.S., CHAIRMAN  
 L3705 P121

**C. Description of monument for corner and accessories established to perpetuate locating the position of the corner:**

I replaced the 1/2" iron with a 3/4" x 24" iron rod with 2" diameter aluminum cap stamped "Macomb County Monument MI Act 345 #26459" in an existing monument box.

N.62° E.	81.18'	P.K. nail and remon tag S. face P. pole
S.06° W.	88.90'	P.K. & remon. tag E. face 8" tree
N.72° W.	130.28'	P.K. & remon. tag N.E. face U-pole
S.75° W.	110.39'	P.K. and remon. tag N. face 30" Maple

The selected location is accepted by me and generally accepted by Professional Surveyors as the best available evidence of the position of the original corner.



Signed by Robert D. Kohn  
 Surveyor's Michigan License No. 26459

Date NOVEMBER 9, 1994