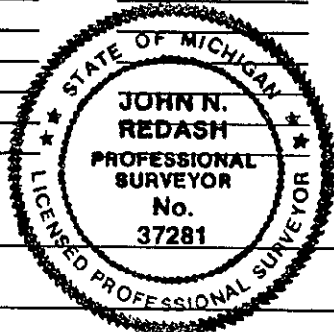


LAND CORNER RECORDATION CERTIFICATE
Filing Requirement of Act 74, Mich. P.A. 1970

For corners in

Macomb Located In: Macomb Twp. Corner Code #
 (County)

1. Public Land Survey T-3-N R-13-E K-4
 T R
 T R
 T R
2. Property Controlling in Section S T R
 S T R
3. Miscellaneous Property in Sec. S T R
 S T R
4. Lot No. , Recorded Plat
5. Private Claims

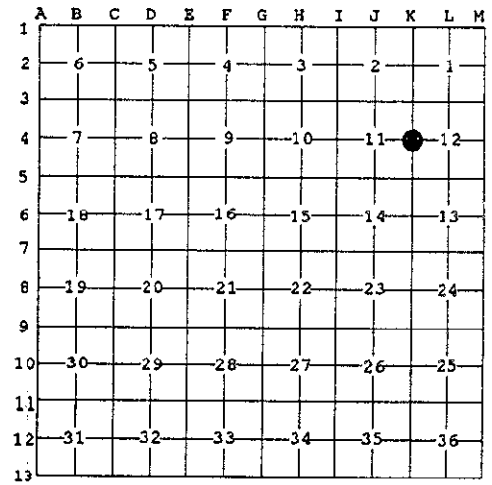


SURVEY &
 REMONUMENTATION

MAR 15 1999

SECTION

Register of Deeds Stamp & File Number



I, John N. Redash, in a field survey on Jan. 8, 1998 do hereby state that under requirements of P.A. 74, Michigan P.A. of 1970, the corner points mentioned in lines 1 and 2 above were in conformance with regulations and rules therefore as required in the current manual of survey instructions of the United States Department of the Interior, Bureau of Land Management or by a decree of a Court of Law and /or that the corner points mentioned in lines 3, 4 and 5 above were in conformance with the rules of the Michigan Board of Land Surveyors or by a Decree of a Court of Law; established, re-established, monumented, recovered, found as expressed below:

NOTE: Not more than 2 corners, all in the same town and range, may be recorded on this certificate.

A. Description of original monument and accessories and/or subsequent restoration:

1817	Set post	G.L.O. Notes	W. Preston	N/A	N/A
1956	"James Light Subdivision"	Plat	F. Bridges	#5779	L36, P31
1986	Set P.K. nail from sub monuments	L.C.R.C.	D. King	#30085	L4077, P537

B. Description of corner evidence found and/or method applied in restoring or reestablishing corner:

A P.K. nail in asphalt pavement at the intersection of North Avenue and Chapman Road currently occupies this corner. The following witness ties were used to recover and verify its position: Two ties match current measurements from L.C.R.C. L4077, P537. Field measurements were obtained between the following corners:

K-3 to K-4		K-4 to K-5	
2655.50	Meas.	2661.11	Meas.
2640.00	G.L.O.	2640.00	G.L.O.
2655.93	Rec. Tax Desc.	2661.24	Rec. Tax Desc.

ACCEPTED BY THE MACOMB COUNTY SURVEY PEER GROUP AS THE OFFICIAL CORNER UNDER MICHIGAN PUBLIC ACT 345 OF 1990 AT A MEETING HELD ON 10/18/98

 WILLIAM E. SODERBERG, P.S., CHAIRMAN

NOTE: Concrete monuments found from Plat Liber 36, Page 31 measured as shown on face of plat.

C. Description of monument for corner and accessories established to perpetuate locating the position of the corner:

I replaced the found P.K. nail with a 3/4" X 24" iron rod with a 2" aluminum cap stamped "Macomb County Monument MI Act 345 #37281" in a new monument box. Witness ties are as follows:

- AZ. 15° 117.12' Set mag. nail and Macomb County Remon. tag W. face utility pole
- AZ. 142° 44.57' Set P.K. nail and Macomb County Remon. tag in S.W. face utility pole
- AZ. 232° 43.91' Set P.K. nail and Macomb County Remon. tag in N.W. face utility pole
- AZ. 283° 55.70' Set P.K. nail and Macomb County Remon. tag in N. face 18" Ash
- AZ. 348° 101.82' Set P.K. nail and Macomb County Remon. tag in S.W. face utility pole

The selected location is accepted by me and generally accepted by Professional Surveyors as the best available evidence of the position of the original corner.

Signed by Date 12-23-98
 Surveyor's Michigan License No. 37281

829