

SURVEY &
REMONUMENTATION

APR 07 1998

LAND CORNER RECORDATION CERTIFICATE
Filing Requirement of Act 74, Mich. P.A. 1970

For corners in

Macomb Located In: Chesterfield Corner Code #
(County) Twp.

1. Public Land Survey T-3-N R-14-E C-3
T R
T R
T R

2. Property Controlling S T R
in Section S T R

3. Miscellaneous S T R
Property in Sec. S T R

SECTION

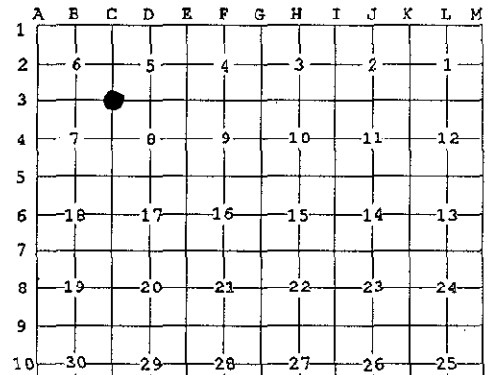
Register of Deeds Stamp & File Number

4. Lot No. _____, Recorded Plat _____

5. Private Claims _____

I, John N. Redash, in a field survey on October 16, 1997 do hereby state that under requirements of P.A. 74, Michigan P.A. of 1970, the corner points mentioned in lines 1 and 2 above were in conformance with regulations and rules therefore as required in the current manual of survey instructions of the United States Department of the Interior, Bureau of Land Management or by a decree of a Court of Law and for that the corner points mentioned in lines 3, 4 and 5 above were in conformance with the rules of the Michigan Board of Land Surveyors or by a Decree of a Court of Law; established, re-established, monumented, recovered, found as expressed below:

NOTE: Not more than 2 corners, all in the same town and range, may be recorded on this certificate.



ACCEPTED BY THE MACOMB COUNTY SURVEY PEER GROUP AS THE OFFICIAL CORNER UNDER MICHIGAN PUBLIC ACT 345 OF 1990 AT A MEETING HELD ON 12/22/97

William E. Soderberg
WILLIAM E. SODERBERG, P.S., CHAIRMAN

A. Description of original monument and accessories and/or subsequent restoration:

Year	Description	G.L.O. Notes	Surveyor	License #	File #
1817	set post		W. Preston	N/A	N/A
1984	1/2" Iron rod	Survey	G. Dely	#5234	L3684, P876
1986	1/2" Iron rod	L.C.R.C.	R. Donnelly	#21563	L4105, P602
1986	1/2" Iron rod	Survey	R. Donnelly	#21563	L4105, P604
1986	1/2" Iron rod	Survey	H. Kobs	#14097	L4220, P471
1987	1/2" Iron	L.C.R.C.	H. Kobs	#14097	L4220, P492
1988	1/2" Iron rod	Survey	M. Dunn	#30081	L4484, P587
1989	1/2" Iron rod	L.C.R.C.	R. Donnelly	#21563	L4723, P620
1993	1/2" Iron with cap (not legible)	L.C.R.C.	G. Platz	#38121	L6185, P654

B. Description of corner evidence found and/or method applied in restoring or reestablishing corner:

A 1/2" Iron rod in gravel road at the intersection of 25 Mile Road and Chesterfield Road currently occupies this corner. The following witness ties were used to recover and verify its position; current measurements match the following ties: 2 ties from L.C.R.C. L3684, P876; 2 ties from L4220, P471 and L.C.R.C. L4220, P492; 4 ties from L.C.R.C. L6185, P654. Field observations were obtained between the following corners:

From Corner	To Corner	Measurement
B-3 to C-3	C-3 to C-4	2669.59 meas.
2669.58 Rec. Survey L4220, P471	2687.17 meas.	2686.94 Rec. Survey L3684, P876
	2687.05 Rec. Survey L4105, P604	2686.62 Rec. Survey L4484, P587

C. Description of monument for corner and accessories established to perpetuate locating the position of the corner

I replaced the 1/2" iron rod in gravel road with a 3/4" X 24" iron rod with a 2" aluminum disk stamped "Macomb County Monument MI Act 345 #37281". Witness ties are as follows:

Direction	Distance	Found
Due North	32.79'	Found 1/2" iron
N. 51° E.	37.25'	Found P.K. Nail and tag #21563 NW face U-pole
S. 46° E.	72.69'	Found P.K. Nail and Tag #21563 SW face wood fence post
S. 53° W.	61.08'	Found P.K. Nail and tag #21563 NW face U-pole

The selected location is accepted by me and generally accepted by Professional Surveyors as the best available evidence of the position of the original corner.

Signed by John N. Redash
Surveyor's Michigan License No. 37281

Date December 46, 1997

