

LAND CORNER RECORDATION CERTIFICATE
Filing Requirement of Act 74, Mich. P.A. 1970

For corners in

MACOMB County Located In: Chesterfield Township Corner Code # C-9
1. Public Land Survey T 3N R 14E
2. Property Controlling in Section S T R
3. Miscellaneous Property in Sec. S T R
4. Lot No. , Recorded Plat
5. Private Claims

RECORDED IN MACOMB COUNTY RECORDS AT: 8:30 AM.

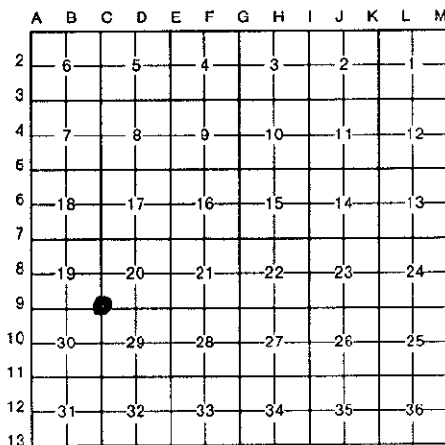
DEC 28 1993

Signature of Clerk-Registered of Deeds, Macomb County, Michigan

Register of Deeds Stamp & File Number

I, Shelby W. Money, in a field survey on November 18, 1993, do hereby certify that under requirements of P.A. 74, Michigan P.A. of 1970, the corner points mentioned in lines 1 and 2 above were in conformance with regulations and rules therefore as required in the current manual of survey instructions of the United States Department of the Interior, Bureau of Land Management or by a decree of a Court of Law and/or that the corner points mentioned in lines 3, 4 and 5 above were in conformance with the rules of the Michigan Board of Land Surveyors or by a Decree of a Court of Law; established, re-established, monumented, re-monumented, recovered, found as expressed below:

NOTE: Not more than 4 corners, all in the same town and range, may be recorded on this certificate.



A. Description of original monument and accessories and/or subsequent restoration:

LCRC (1973) L.2383 P.861 AVENDT #16034
GLO POST. NO WITNESSES REMAIN
FOUND 4" CONCRETE MONUMENT
S 15° E 36.60' PK NAIL IN 20" HICKORY TREE
WSW 38.51' PK NAIL IN 18" HICKORY TREE
NORTHEAST 20.57' PK NAIL IN 24" ASH TREE
LCRC (1988) L.4484 P.578 DUNN #30081
FOUND 3/8" PIPE IN CONCRETE
N 75° W 31.46' SET PK NORTH SIDE 12" DOGWOOD
NORTH 58.81' CENTERLINE OF STEEL FENCE POST
S 15° E 77.84' NE CORNER CONCRETE FOUNDATION
S 60° W 27.59' SE CORNER DE CONCRETE TRANS PAD

LCRC (1989) L.4662 P.736 DUNN #30081
FOUND 3/8" PIPE IN CONCRETE
N 75° W 31.46' SET PK NORTH SIDE 12" DOGWOOD
NORTH 58.81' CENTERLINE OF STEEL FENCE POST
S 15° E 77.84' NE CORNER CONCRETE FOUNDATION
S 60° W 27.59' SE CORNER DE CONCRETE TRANS PAD

B. Description of corner evidence found and/or method applied in restoring or reestablishing corner:

C-9 FOUND 4" CONCRETE MONUMENT WITH 3/4" PIPE

THIS CORNER VERIFIED BY:

CERTIFICATE OF SURVEY LIBER 2383 PAGE 860
CERTIFICATE OF SURVEY LIBER 4484 PAGE 592
CHESTERFIELD MEADOWS SUBDIVISION LIBER 74 PAGE 39
QUEEN JOSEPHINE COURTS SUBDIVISION LIBER 66 PAGES 13-14

C. Description of monument for corner and accessories established to perpetuate locating the position of the corner:

C-9 SET MACOMB COUNTY REMONUMENTATION MARKER #39002 ON FOUND 4" CONCRETE MONUMENT WITH 3/4" PIPE AND WITNESSES:

N 75° W 31.19' SET PK NAIL W/MCW TAG IN THE SOUTH FACE OF A 12" DOGWOOD TREE
SOUTH 3.80' SET CORNER OF STEEL FENCE POST
S 65° W 29.53' SET NORTHWEST CORNER OF CONCRETE OF D.E. TRANSFORMER PAD
S 15° E 77.84' SET NORTHEAST CORNER OF HOUSE #26931 CLARK STREET

The selected location is accepted by me and is generally accepted by Professional Surveyors as the best available evidence of the position of the original corner.

Signed by Shelby W. Money Date 12/14/93

Surveyor's Michigan License No. 38092

ACCEPTED BY THE MACOMB COUNTY SURVEY PEER GROUP AS THE OFFICIAL CORNER UNDER MICHIGAN PUBLIC ACT 345 1990 AT A MEETING HELD ON 12-15-93

Signature of Frank J. Decker, FS, PE, Chairman

