

LAND CORNER RECORDATION CERTIFICATE
 Filing Requirement of Act 74, Mich. P.A. 1970

For corners in

Macomb Located In: Washington Township Corner Code #
 (County)

- | | | | |
|---------------------------------------|-------------|--------------|------------|
| 1. Public Land Survey | <u>T 4N</u> | <u>R 12E</u> | <u>D-3</u> |
| | T | R | |
| | T | R | |
| | T | R | |
| 2. Property Controlling
In Section | <u>S</u> | <u>T</u> | <u>R</u> |
| | S | T | R |
| 3. Miscellaneous
Property in Sec. | <u>S</u> | <u>T</u> | <u>R</u> |
| | S | T | R |

SURVEY &
REMONUMENTATION

OCT 19 1998

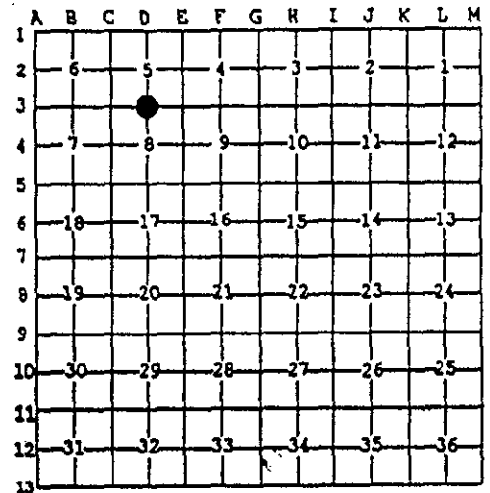
SECTION

4. Lot No. _____ Recorded Plat _____
 5. Private Claims _____

Register of Deeds Stamp & File Number

C0738448 LIBER:08156 PAGE:812 09:45A 07/20/1998
 CARMELLA SABAUGH-MACOMB COUNTY, MI REG/DEEDS

I, Huston K. Kennedy, in a field survey on April 6, 1998 do hereby state that under requirements of P.A. 74, Michigan P.A. of 1970, the corner points mentioned in lines 1 and 2 above were in conformance with regulations and rules therefore as required in the current manual of survey instructions of the United States Department of the Interior, Bureau of Land Management or by a decree of a Court of Law and/or that the corner points mentioned in lines 3, 4 and 5 above were in conformance with the rules of the Michigan Board of Land Surveyors or by a Decree of a Court of Law; established, re-established, monumented, recovered, found as expressed below:



NOTE: Not more than 2 corners, all in the same town and range, may be recorded on this certificate. ACCEPTED BY THE MACOMB COUNTY SURVEY DEER GROUP AS THE OFFICIAL CORNER UNDER MICHIGAN PUBLIC ACT 345 OF 1990 AT A MEETING HELD ON 6-13-98

William E. Soderberg
 WILLIAM E. SODERBERG, P.S. CHAIRMAN

- A. Description of original monument and accessories and/or subsequent restoration:
 1817-GLO Wampler, D.S.; Set Post 18" White Oak N17°W 15 Links; 11" White Oak S38°E 10 Links
 1.) 1980-AEW, Inc., unrecorded witnesses - Set a 1/2" Iron Rod w/cap #17635
- B. Description of corner evidence found and/or method applied in restoring or reestablishing corner:
 1998-Kennedy Surveying, Inc. - Kennedy, PS #17623 - I set a 3/4" X 24" Iron Rod with a 2" diameter aluminum cap stamped Macomb County Monument, MI Act #345.

HOW THE CORNER WAS RECOVERED

I received a copy of a Survey for the North 1/2 of Section 8 by Anderson, Eckstein and Westrick, Inc., Job No. 15039. The survey had a distance between C-3 to D-3 to E-3 and stated that a 1/2" Iron Rod was set at D-3 point #51.

The distance between C-3 to E-3 as per the Survey is 5465.98 feet and I measured 5465.02 feet, I also recovered point #50 which is located 2574.70 feet West of E-3. I prorated the distance between C-3 to D-3 to E-3 to the distance I measured between C-3 to E-3 and recovered D-3 on the line projected from E-3 thru point #50. Point #50 appears on a Survey recorded in Liber 2268, page 665 of Macomb County Records.

FIELD MEASUREMENTS BETWEEN

<u>D-3 to C-3</u> GLO = 40.75 chains or 2689.50 Ft. AEW = 2733.05 Ft. 2732.57 Ft. (GPS-GROUND)	<u>D-3 to E-3</u> GLO = 40.75 chains or 2689.50 AEW = 2732.83 Ft. 2732.45 Ft. (GPS-GROUND)	Angle @ D-3, E-3 & E-2 89°58'35" @ 89°58'15" (M)
---	---	--

- C. Description of monument for corner and accessories established to perpetuate locating the position of the corner:
 D-3 I set a 3/4" X 24" Iron Rod with a 2" diameter aluminum cap stamped "Macomb County Monument" Act #345 #17623.
 N58°W 64.37' Set Mag Nail & Remon Washer SW face 6" Elm
 N76°E 125.40' Set Mag Nail & Remon Washer SE face 5" Elm
 S42°E 61.92' Set Mag Nail & Remon Washer NE face Power Pole
 S73°E 162.03' Set Mag Nail & Remon Washer North face Power Pole

The selected location is accepted by me and is generally accepted by Professional Surveyors as the best available evidence of the position of the original corner.

Signed by: *Huston K. Kennedy* Date 7-2-98
 Surveyor's Michigan License No. 17623

