

MAR 17 2000

LAND CORNER RECORDATION CERTIFICATE
Filing Requirement of Act 74, Mich. P.A. 1970

SECTION

For corners in

Macomb (County) Located in: Bruce Township Corner Code #
1. Public Land Survey T 4N R 12E M-8
2. Property Controlling in Section S T R
3. Miscellaneous Property in Sec. S T R

1091804
LIBER 9267 PAGE 960
12/27/1999 01:11:49 P.M.
MACOMB COUNTY, MI
CARMELLA SABAUGH, REG/DEEDS

Register of Deeds Stamp & File Number

4. Lot No. Recorded Plat
5. Private Claims

I, Huston K. Kennedy, in a field survey on April 15, 1999 do hereby state that under requirements of P.A. 74, Michigan P.A. of 1970, the corner points mentioned in lines 1 and 2 above were in conformance with regulations and rules therefore as required in the current manual of survey instructions of the United States Department of the Interior, Bureau of Land Management or by a decree of a Court of Law and/or that the corner points mentioned in lines 3, 4 and 5 above were in conformance with the rules of the Michigan Board of Land Surveyors or by a Decree of a Court of Law; established, re-established, monumented, recovered, found as expressed below:

NOTE: Not more than 2 corners, all in the same town and range, may be recorded on this certificate.

Grid table with columns A-M and rows 1-13. Contains numbers 1-36 in a grid pattern.

- A. Description of original monument and accessories and/or subsequent restoration: 1817-GLO Wampler, D.S.; Set Post 18" Elm N51°W 23 Links; 16" Elm N36°W 28 Links; 1.) 1986-Kobs, PS #14097; Survey L.4077, Pgs.594-596 - Section corner falls in a river 2.) 1993-King, PS #30085; unrecorded Survey - Section corner falls in a river
B. Description of corner evidence found and/or method applied in restoring or reestablishing corner: 1999-Kennedy Surveying, Inc. - Kennedy, PS #17623 Fnd a 1/2" Iron Rod located 3 feet South of the South edge of the North branch of the Clinton River extending to the South and East. Old fence line extends to the South and East. The West 1/4 corner of Section 19, T5N, R13E, Armada Township (A-8) is located N87°06'54" West 3.82 feet. The location of this corner was verified by using the description of parcel 012-440-002, but this position was not accepted by the Peer Group Committee or myself.

After a lengthy discussion with the Peer Group Committee it was generally agreed upon that the recovered position of the corner would be based upon the position as shown on a recorded survey by Herbert J. Kobs, PS #14097, dated May 20, 1986 in Liber 4077, pages 594-596 and a unrecorded survey by Donald King, PS #30085 dated April 20, 1993. The recovered position of this corner falls in the North branch of the Clinton River. A reference monument was set on the East-West 1/4 of Section 24 35.00 feet West of the corner, also a reference corner was set on the East line of Section 24, 78.35 feet South of the corner. The West 1/4 corner of Section 19, T5N, R13E, Aramda Township (A-9) is located 78.35 feet to the South.

Field measurements on back side

- C. Description of monument for corner and accessories established to perpetuate locating the position of the corner: M-8 I set a 4" diameter Concrete Monument with a 1/2" Iron Rod 36" long w/2" diameter aluminum cap stamped "Macomb County Monument, MI Act #345", PS #17623 as a reference monument to M-8
S07°E 15.72' Set Mag Nail & Remon Washer West face 9" Maple East 35.00 feet East 1/4 corner of Section 24, T4N, R12E (M-8)
N85°W 23.25' Set Mag Nail & Remon Washer North face 26" Poplar
N47°W 24.20' Set Mag Nail & Remon Washer NE face 9" Box Elder
N10°W 17.35' Set Mag Nail & Remon Washer West face 8" Box Elder
South 78.35 feet West 1/4 corner of Section 19, T5N, R13E, Armada Township (A-8)

The selected location is accepted by me and is generally accepted by Professional Surveyors as the best available evidence of the position of the original corner.

Signed by: [Signature] Date 11-19-99
Surveyor's Michinan License No. 17623



ACCEPTED BY THE MACOMB COUNTY SURVEY PEER GROUP AS THE OFFICIAL CORNER UNDER MICHIGAN PUBLIC ACT 345 OF 1990 AT A MEETING HELD ON 8/31/99
WILLIAM E. SODERBERG, P.S., CHAIRMAN

TOWN 5 NORTH, RANGE 12 EAST, BRUCE TOWNSHIP, MACOMB COUNTY M-8

FIELD MEASUREMENTS BETWEEN

M-8 to A-8

LIBER 9267 PAGE 961

No GLO
 No recorded distances
 N87°06'54" West 3.82 Ft. & N02°14'60" W 0.30 Ft. of
 M-8 after setting on the range line

M-8 to M-7

GLO = 40 chains or 2640.00 Ft.
 No recorded distances
 2811.22 Ft. (MEA 1999)

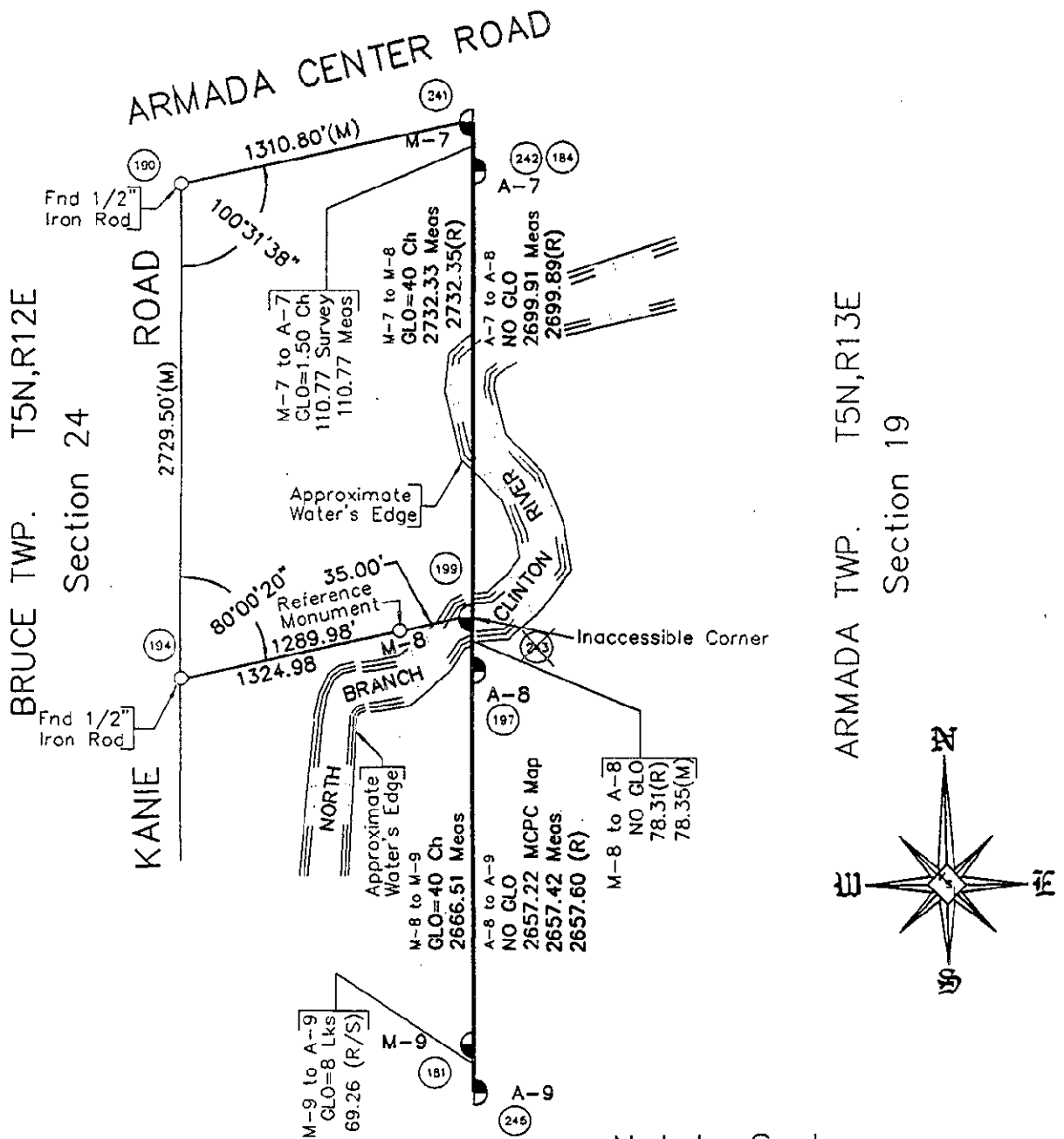
SURVEY &
 REMONUMENTATION

MAR 17 2000

M-8 to M-9

GLO = 40 chains or 2640.00 FT.
 No recorded distances
 2587.97 Ft. (MEA 1999)

SECTION



Not to Scale