

LAND CORNER RECORDATION CERTIFICATE
Filing Requirement of Act 74, Mich. P.A. 1970

For corners in

Macomb

(County)

Located In: Ray Twp.

Corner Code #

1091830
LIBER 9268 PAGE 18
12/27/1999 01:15:42 P.M.
MACOMB COUNTY, MI
CARNELLA SABAUGH, REG/DEEDS

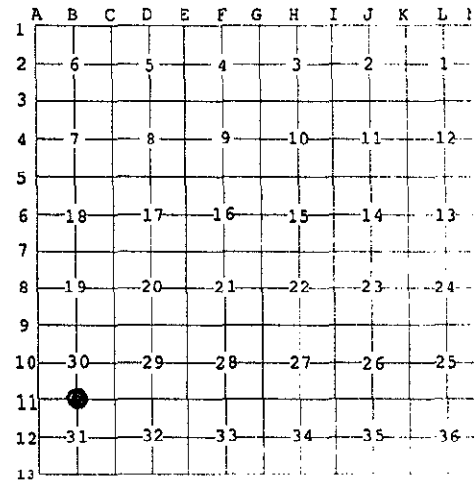
- 1. Public Land Survey T-4-N R-13-E
2. Property Controlling in Section S T R
3. Miscellaneous Property in Sec. S T R

B-11
SURVEY &
RECORDATION
MAR 17 2000
SECTION

Register of Deeds Stamp & File Number

- 4. Lot No. , Recorded Plat
5. Private Claims

I, John N. Redash, in a field survey on Jan. 14, 1999 do hereby state that under requirements of P.A. 74, Michigan P.A. of 1970, the corner points mentioned in lines 1 and 2 above were in conformance with regulations and rules therefore as required in the current manual of survey instructions of the United States Department of the Interior, Bureau of Land Management or by a decree of a Court of Law and/or that the corner points mentioned in lines 3, 4 and 5 above were in conformance with the rules of the Michigan Board of Land Surveyors or by a Decree of a Court of Law; established, re-established, monumented, recovered, found as expressed below:



NOTE: Not more than 2 corners, all in the same town and range, may be recorded on this certificate.

A. Description of original monument and accessories and/or subsequent restoration:

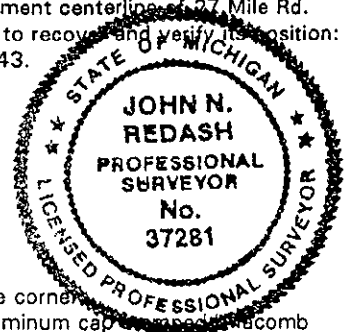
Table with 6 columns: Year, Description, G.L.O., Surveyor, File No., and Reference. Rows include entries for 1817, 1973, 1975, 1979, 1981, 1984, 1990, and 1998.

B. Description of corner evidence found and/or method applied in restoring or reestablishing corner:

A 1/2" iron bar in an existing monument box in asphalt pavement, approximately 1.5' north of pavement centerline of 27 Mile Rd. currently occupies this corner. Evidence of tree line to north. The following witness ties were used to recover and verify its position: 1 tie matches current measurements from LCRC L2590, P344; while 2 ties match LCRC L2426, P343.

Field measurements were observed between the following corners:

Table with 2 columns: Corner pair and Measurement. Includes B-11 to C-11 (2668.67 meas.), A-11 to B-11 (2018.22 meas.), 2640.00 Rec. G.L.O. (40 Chains), 2026.00 Rec. G.L.O. (30.7 Chains), 2668.47 Rec. KOB Survey L2590 P334, 2017.39 Survey L2393 P192, and 2668.67 Rec. Survey L8045 P007.



C. Description of monument for corner and accessories established to perpetuate locating the position of the corner: I replaced the found 1/2" iron in an existing monument box with a 3/4" x 24" iron rod with a 2" aluminum cap as shown on Macomb County Monument MI ACT 345 #37281"

Witnesses are as follows:

Table with 3 columns: Azimuth, Distance, and Description. Includes entries for Az 72°, 97.07', Az 100°, 114.15', Az 237°, 50.66', Az 284°, 95.44', and Az 351°, 31.98'.

The selected location is accepted by me and generally accepted by Professional Surveyors as the best available evidence of the position of the original corner.

Signed by [Signature]

Date 11/22/99

Surveyor's Michigan License No. 37281

ACCEPTED BY THE MACOMB COUNTY SURVEY PEER GROUP AS THE OFFICIAL CORNER UNDER MICHIGAN PUBLIC ACT 345 OF 1990 AT A MEETING HELD ON 9/28/99

FORM APPROVED BY MICHIGAN STATE BOARD OF PROFESSIONAL SURVEYORS, JAN. 28, 197; REVISED MAY 14, 197; REVISED JAN., 191; REVISED OCT., 191

[Signature] WILLIAM E. SODERBERG, P.S., CHAIRMAN