

MAR 17 2000

LAND CORNER RECORDATION CERTIFICATE
Filing Requirement of Act 74, Mich. P.A. 1970

SECTION

For corners in

Macomb
(County)

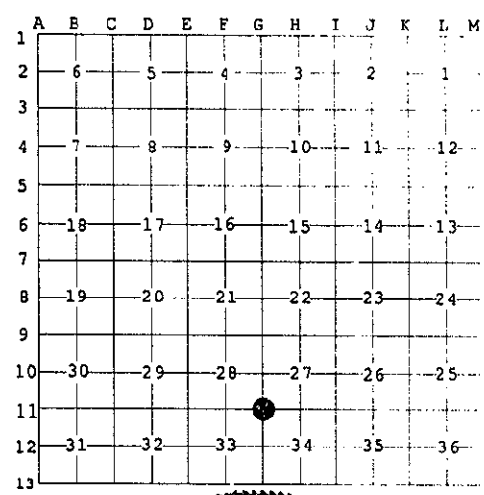
Located in: Ray Twp. Corner Code #

1091836
LIBER 9268 PAGE 24
12/27/1999 01:15:42 P.M.
MACOMB COUNTY, MI
CARHELLA SABAUGH, REG/DEEDS

- 1. Public Land Survey T-4-N R-13-E G-11
 T _____ R _____
 T _____ R _____
 T _____ R _____
- 2. Property Controlling S _____ T _____ R _____
 in Section S _____ T _____ R _____
- 3. Miscellaneous S _____ T _____ R _____
 Property in Sec. S _____ T _____ R _____

Register of Deeds Stamp & File Number

4. Lot No. _____, Recorded Plat _____ ACCEPTED BY THE MACOMB COUNTY SURVEY PEER GROUP AS THE OFFICIAL CORNER UNDER MICHIGAN PUBLIC ACT 345 OF 1990 AT A MEETING HELD ON 9/28/99
 5. Private Claims _____
William E. Soderberg
 WILLIAM E. SODERBERG, P.S., CHAIRMAN



I, John N. Redash, in a field survey on January 13, 19 99 do hereby state that under requirements of P.A. 74, Michigan P.A. of 1970, the corner points mentioned in lines 1 and 2 above were in conformance with regulations and rules therefore as required in the current manual of survey instructions of the United States Department of the Interior, Bureau of Land Management or by a decree of a Court of Law and /or that the corner points mentioned in lines 3, 4 and 5 above were in conformance with the rules of the Michigan Board of Land Surveyors or by a Decree of a Court of Law; established, re-established, monumented, recovered, found as expressed below:

NOTE: Not more than 2 corners, all in the same town and range, may be recorded on this certificate.

A. Description of original monument and accessories and/or subsequent restoration:

Date	Description	Material	Surveyor	License No.	Reference
1817	Set post	GLO	W. Preston	N/A	N/A
1973	3/8" iron bar	Survey	E. O'Rourke	#16937	L 2461, P 680
1973	3/8" iron bar	LCRC	E. O'Rourke	#16937	L 2461, P 682
1978	5/8" iron bar	LCRC	H. Kobs	#14097	L 3021, P 207
1978	5/8" iron bar	Survey	H. Kobs	#14097	L 3021, P 155
1987	5/8" iron bar	Survey	D. King	#30085	L 4306, P 707
1990	5/8" iron bar	Survey	D. King	#30085	L 4866, P 834
1996	5/8" iron bar	Survey	D. King	#30085	L 7148, P 079



B. Description of corner evidence found and/or method applied in restoring or reestablishing corner:

A 1/2" iron bar in an existing monument box located at the intersection of 27 Mile Road (asphalt) and Broughton Road currently occupies this corner.
 The following witness ties were used to verify its position:
 One tie matches current measurements from LCRC Liber 2461, Page 682; while two ties match LCRC Liber 3021, Page 207.

Field measurements were observed between the following corners:
 F-11 to G-11 2667.64 meas. G-11 to G-12 2684.87 meas. G-11 to H-11 2686.24 meas.
 2640.00 Rec. G.L.O. (40 Chains) 2640.00 Rec. G.L.O. (40 Chains) 2648.25 Rec. G.L.O. (40.13 Chains)
 2685.24 Rec. Survey L3021 P155

C. Description of monument for corner and accessories established to perpetuate locating the position of the corner:

I replaced the 1/2" iron bar with a 3/4" x 24" iron rod with a 2" diameter aluminum cap stamped "Macomb County Monument MI ACT 345 #37281" in the existing monument box.

- Witnesses are as follows:
- Az 70° 69.09 feet Set mag nail with Macomb County Remon Tag in S face of 30" poplar.
 - Az 206° 64.04 feet Found P.K. nail; set mag nail with Macomb County Remon Tag in NW face utility pole.
 - Az 257° 132.12 feet Set mag nail with Macomb County Remon Tag in north face of 30" maple.
 - Az 342° 40.33 feet Found P.K. nail; set mag nail with Macomb County Remon Tag in east face of utility pole.

The selected location is accepted by me and generally accepted by Professional Surveyors as the best available evidence of the position of the original corner.

Signed by John N. Redash Date 11/22/99
 Surveyor's Michigan License No. 37281

9167