

LAND CORNER RECORDATION CERTIFICATE
Filing Requirement of Act 74, Mich. P.A. 1970

**SURVEY &
REMONUMENTATION**

FEB 27 1997

COMMISSION

For corners in

<u>Macomb</u> (County)	Located In:	Corner Code #
	<u>Lenox Township</u>	
1. Public Land Survey	T 4N R 14E	<u>A3</u>
	T _____ R _____	_____
	T _____ R _____	_____
	T _____ R _____	_____
2. Property Controlling in Section	S _____ T _____ R _____	_____
	S _____ T _____ R _____	_____
3. Miscellaneous Property in Sec.	S _____ T _____ R _____	_____
	S _____ T _____ R _____	_____

Register of Deeds Stamp & File Number

4. Lot No. _____, Recorded Plat _____
5. Private Claims _____

*C0458171 LIBER:07298 PAGE:192 10:47A 01/02/1997
CARMELLA SABAUGH-MACOMB COUNTY, MI REG/DEEDS*

I, Craig P. Amey, in a field survey on June 15, 1996 do hereby certify that under requirements of P.A. 74, Michigan P.A. of 1970, the corner points mentioned in lines 1 and 2 above were in conformance with regulations and rules therefore as required in the current manual of survey instructions of the United States Department of the Interior, Bureau of Land Management or by a decree of a Court of Law and/or that the corner points mentioned in lines 3, 4 and 5 above were in conformance with the rules of the Michigan Board of Land Surveyors or by a Decree of a Court of Law; established, re-established, monumented, re-monumented, recovered, found as expressed below:

NOTE: Not more than 4 corners, all in the same town and range, may be recorded on this certificate.

1	A	B	C	D	E	F	G	H	I	J	K	L	M
2		6		5		4		3		2		1	
3													
4		7		8		9		10		11		12	
5													
6		18		17		16		15		14		13	
7													
8		19		20		21		22		23		24	
9													
10		30		29		28		27		26		25	
11													
12		31		32		33		34		35		36	
13													

A. Description of original monument and accessories and/or subsequent restoration:

1817 William Preston	Set post	GLO
1986 Herbert J. Kobs 14097	Found 1/2" iron	LCRC L4055 P671

B. Description of corner evidence found and/or method applied in restoring or reestablishing corner:

Found 1/2" iron bar with cap nearby. Iron is on the edge of a crushed concrete driveway on the north side of 31 Mile Road. The iron matched the recorded witnesses. Additionally, a 1/2" pipe was found approximately 2' north of the iron. A 1" pipe was also found approximately 9' north of the iron. Both pipes are in the crushed concrete driveway. With no supporting recorded or occupation evidence to support the pipes, the iron is accepted as the corner location. See sketch on reverse side.

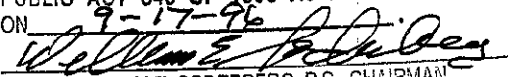
North	2665.53	East Quarter Post of Section 6 (A2)	2640' or 40 ch GLO, 2678.18' protracted
South	2728.79	East Quarter Post of Section 7 (A4)	2640' or 40 ch GLO, 2707.28' protracted

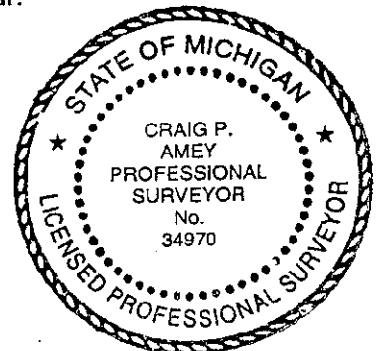
C. Description of monument for corner and accessories established to perpetuate locating the position of the corner:

Replaced existing found iron with a 3/4" by 24" rebar with a 2" diameter aluminum cap stamped "Macomb County Monument MI ACT 345 A3 34970"

- 175° 82.05' Found PK and MCRC tag in the E face of a 36" Oak.
- 115° 82.76' Set PK and Macomb County Remonumentation tag in the NE face of a utility pole
- 5° 22.03' Set PK and Macomb County Remonumentation tag in the W face of a utility pole.
- 245° 4.51' Set PK and Macomb County Remonumentation tag in the S face of a 4" Cedar.
- 180° 162.77' Set 3/4" rebar with Macomb County Remonumentation cap (M3, T4N, R13E)

The selected location is accepted by me and is generally accepted by Professional Surveyors as the best available evidence of the position of the original corner.

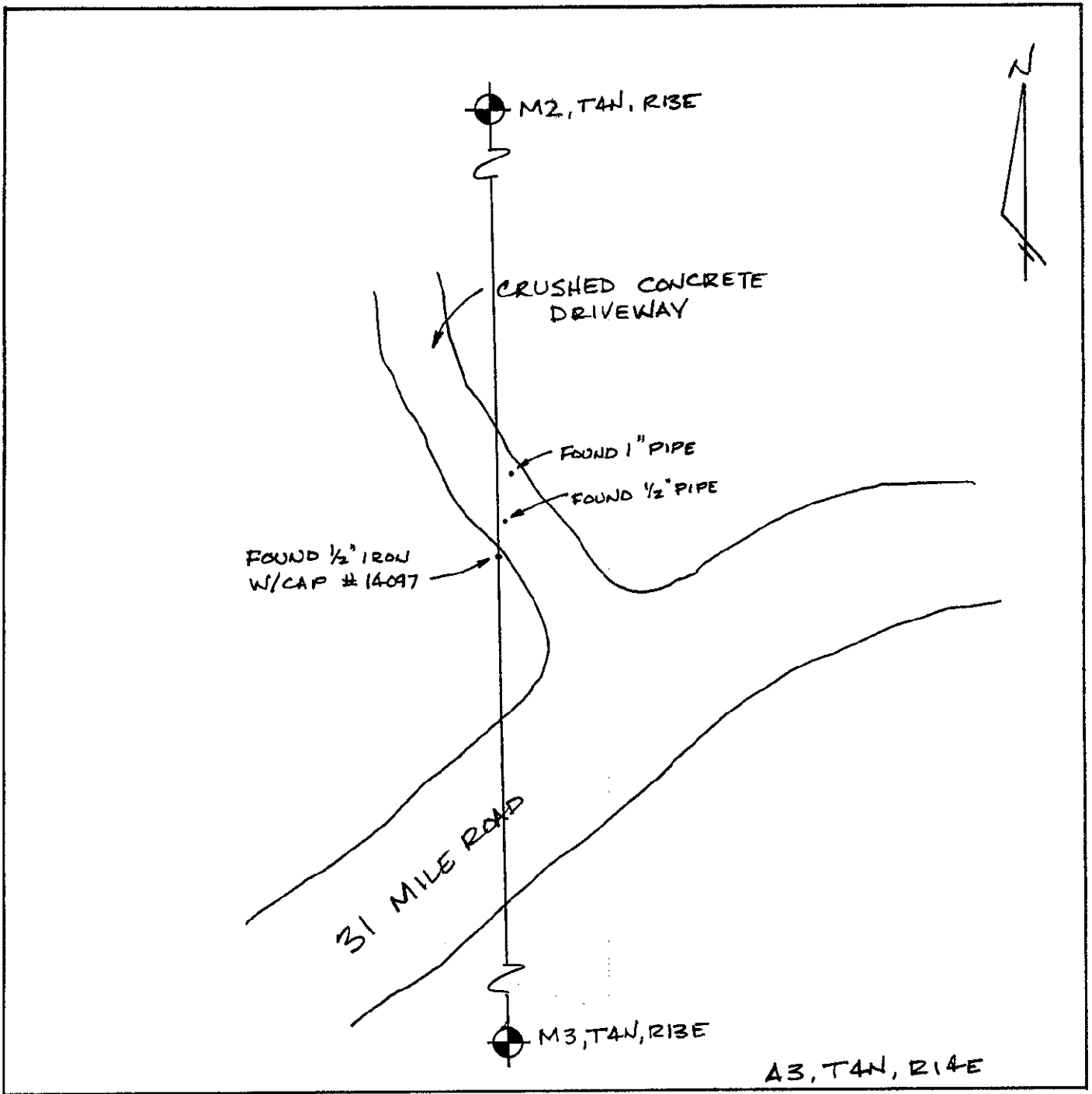
ACCEPTED BY THE MACOMB COUNTY SURVEY PEER GROUP AS THE OFFICIAL CORNER UNDER MICHIGAN PUBLIC ACT 345 OF 1990 AT A MEETING HELD ON 9-17-96

WILLIAM E. SODERBERG, P.S., CHAIRMAN



Signed by  Date November 30, 1996

Surveyor's Michigan License No. 34970

580



C0458171 LIBER:07298 PAGE:193 10:47A 01/02/1997
 CARMELLA SABAUGH-MACOMB COUNTY, MI REG/DEEDS

SURVEY &
 REMONUMENTATION

FEB 27 1997

COMMISSION