

LAND CORNER RECORDATION CERTIFICATE
Filing Requirement of Act 74, Mich. P.A. 1970

For corners in

<u>Macomb</u> (County)	Located in: Bruce Township	Corner Code # E-13
1. Public Land Survey	T <u>5N</u> R <u>12E</u>	<u>E-13</u>
	T <u> </u> R <u> </u>	<u> </u>
	T <u> </u> R <u> </u>	<u> </u>
	T <u> </u> R <u> </u>	<u> </u>
2. Property Controlling in Section	S <u> </u> T <u> </u> R <u> </u>	<u> </u>
	S <u> </u> T <u> </u> R <u> </u>	<u> </u>
3. Miscellaneous Property in Sec.	S <u> </u> T <u> </u> R <u> </u>	<u> </u>
	S <u> </u> T <u> </u> R <u> </u>	<u> </u>

SURVEY &
REMONUMENTATION

APR 07 1998

SECTION

Register of Deeds Stamp & File Number

4. Lot No. _____, Recorded Plat _____
 5. Private Claims _____

I, Huston K. Kennedy, in a field survey on 5/12, 19 97 do hereby state that under requirements of P.A. 74, Michigan P.A. of 1970, the corner points mentioned in lines 1 and 2 above were in conformance with regulations and rules therefore as required in the current manual of survey instructions of the United States Department of the Interior, Bureau of Land Management or by a decree of a Court of Law and /or that the corner points mentioned in lines 3, 4 and 5 above were in conformance with the rules of the Michigan Board of Land Surveyors or by a Decree of a Court of Law; established, re-established, monumented, recovered, found as expressed below:

A	B	C	D	E	F	G	H	I	J	K	L	M
1												
2	6		5		4		3		2		1	
3												
4	7		8		9		10		11		12	
5												
6	18		17		16		15		14		13	
7												
8	19		20		21		22		23		24	
9												
10	30		29		28		27		26		25	
11												
12	31		32		33		34		35		36	
13												

NOTE: Not more than 2 corners, all in the same town and range, may be recorded on this certificate.

A. Description of original monument and accessories and/or subsequent restoration:
 1817-GLO Wampler, D.S.; Post falls in a lake
 1.) 1979-Penn & Associates - Unrecorded Certificate of Survey

ACCEPTED BY THE MACOMB COUNTY SURVEY PEER GROUP AS THE OFFICIAL CORNER UNDER MICHIGAN PUBLIC ACT 345 OF 1990 AT A MEETING HELD ON 7/10/97

William E. Soderberg
 WILLIAM E. SODERBERG, P.S., CHAIRMAN

B. Description of corner evidence found and/or method applied in restoring or reestablishing corner:
 1997 Kennedy Surveying, Inc. - Kennedy, PS #17623 - The corner as recovered falls in Cusick Lake. I set a reference corner on the line between D-13 and E-13 858.63 feet to the West of the recovered position of the corner. The reference corner is 45 feet South of the existing centerline of 32 Mile Road extending West around Cusick Lake to the East which has a bituminous surface. Corner common to Sections 4 & 5, T4N, R12E, Washington Township is located 338.17 feet to the East (E-1).

See back side of LCRC for Field Measurements

C. Description of monument for corner and accessories established to perpetuate locating the position of the corner.
 E-13 I set a 3/4" x 24" Iron Rod w/2" diameter aluminum cap stamped "Macomb County Monument MI Act 345 of 1990 #17623 AS A REFERENCE CORNER TO E-13 TO THE WEST OF THE CALCULATED CORNER
 S79°W 50.46' Center of Brass USGS Monument
 S70°W 95.16' Set PK & Remon Washer North face Power Pole
 N09°W 87.28' Set PK & Remon Washer North face Power Pole
 N14°E 106.62' Center of bell on bell manhole
 N29°E 171.32' Set PK & Remon Washer South face 10" Osage Orange
 East 338.17 feet, corner common to Sections 4 & 5, T4N, R12E, Washington Twp., (E-1) from calculated corner

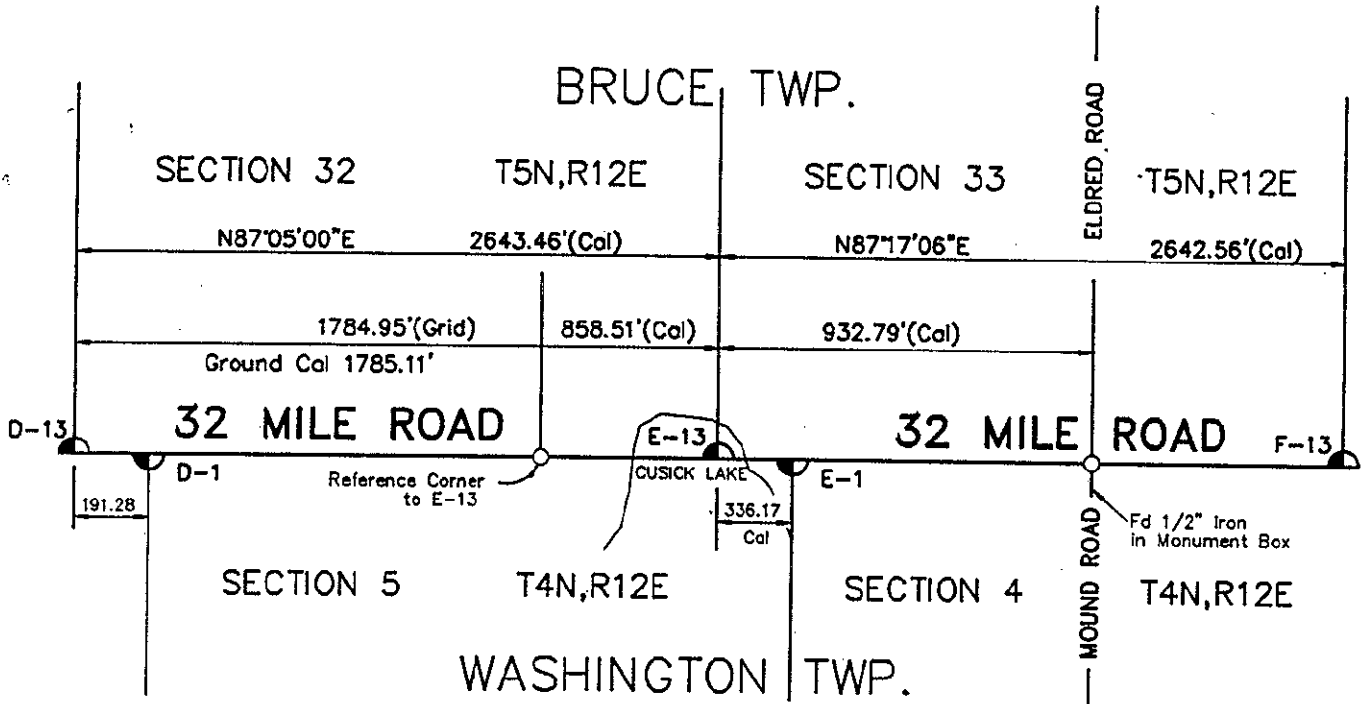
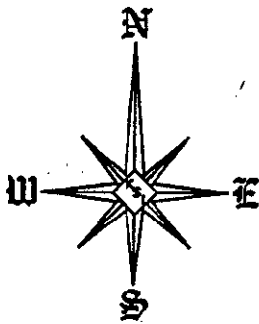


The selected location for this reference corner is accepted as a careful and faithful determination of the position as indicated.

Signed by [Signature]
 Surveyor's Michigan License No. 17623

Date 8-8-97

91 ✓



FIELD MEASUREMENTS BETWEEN

E-13 To D-13

No GLO
 Unrecorded Survey by Fenn & Associates dated 5/2/79 = 2643.63 Ft.
 Calculated = 2643.46 Ft.

E-13 To E-1

No GLO
 Calculated = 338.17 Ft.

E-13 To F-13

No GLO
 Unrecorded Survey by Fenn & Associates dated 5/2/79 = 2643.63 Ft.
 Calculated = 2646.56 Ft.