

MAY 16 1997

COMMISSION

LAND CORNER RECORDATION CERTIFICATE
Filing Requirement of Act 74, Mich. P.A. 1970

For corners in Manistee (County) Located In: _____ Corner Code # _____

1. Public Land Survey	T	<u>21N</u>	R	<u>15W</u>	<u>C-10</u>
	T	_____	R	_____	_____
	T	_____	R	_____	_____
	T	_____	R	_____	_____
2. Property Controlling in Section	S	_____	T	_____	R
	S	_____	T	_____	R
3. Miscellaneous Property in Section	S	_____	T	_____	R
	S	_____	T	_____	R

4. Lot No. _____, Recorded Plat _____

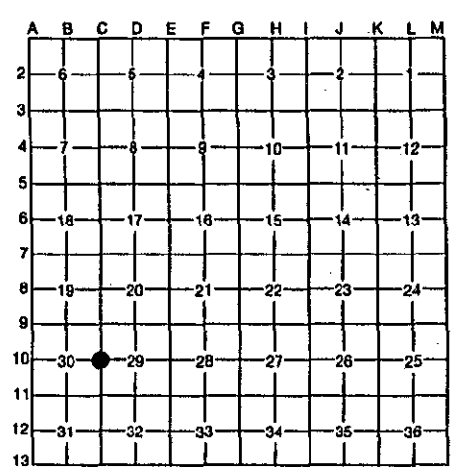
5. Private Claims _____

REGISTER'S OFFICE
MANISTEE COUNTY
96-184 at 1:16pm
MAY 15 1996
Reborah Six
REGISTER OF DEEDS

Register of Deeds Stamp & File Number

I, Richard L. Hays, in a field survey on April, 1996, do hereby certify that under requirements of P.A. 74, Michigan P.A. of 1970, the corner points mentioned in lines 1 and 2 above were in conformance with regulations and rules therefore as required in the current manual of survey instructions of the United States Department of the Interior, Bureau of Land Management or by a decree of a Court of Law and/or that the corner points mentioned in lines 3, 4 and 5 above were in conformance with the rules of the Michigan Board of Professional Surveyors or by a Decree of a Court of Law; established, re-established, monumented, re-monumented, recovered, found as expressed below:

NOTE: Not more than 4 corners, all in the same town and range, may be recorded on this certificate.



A. Description of original monument and accessories and/or subsequent restoration:

C-10 QUARTER CORNER COMMON TO SECTIONS 29 & 30
1837:G.L.O. Survey 1975:Roser #12028 L.C.R.C. 77-11
18" W. Pine N-73°-E 29 Lks(1) Fd. No Corner. Re-Established Quarter
17" Y. Pine S-47°-W 35 Lks(2) Corner per Standard B.L.M. Instructions
6" B. Oak N-60°-W 8.8'(3)
1982:Hays #25847 Act 132, 5" Maple N-25°-W 23.1'(4)
Liber 1, Pg 734 4" R. Pine N-40°-E 45.1'(5)

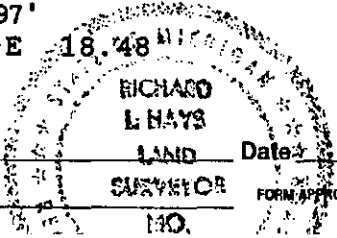
B. Description of corner evidence found and/or method applied in restoring or reestablishing corner:

C-10 QUARTER CORNER COMMON TO SECTIONS 29 & 30
1996:Found D.N.R. Monument set by Carl Roser. Condition of the Recorded Witnesses are as follows:
18" W. Pine N-73°-E 29 Lks(1) GONE
17" Y. Pine S-47°-W 35 Lks(2) GONE
6" B. Oak N-60°-W 8.8'(3) GOOD
5" Maple N-25°-W 23.1'(4) GOOD
4" R. Pine N-40°-E 45.1'(5) GOOD

Corner C-10 ratified by the Manistee County Peer Group according to the county plan adopted pursuant to P.A. 345 of 1990, as amended, (being the State Survey and Remonument Act, MCL 54.261 et seq.). Date of Peer Review: MAY 07 1996

C. Description of monument for corner and accessories established to perpetuate locating the position of the corner:

C-10 QUARTER CORNER COMMON TO SECTIONS 29 & 30
1996:Accepted D.N.R. Monument with cap stamped to identify Corner. Accepted Monument as a careful and faithful re-establishment of the position of the Original Corner.
9" W. Oak N-52°-E 36.42'
Tw. 6"&9" Maple N-24°-W 23.38'(4)
4" B. Oak N-60°-W 9.16'(3)
19" B. Oak S-38°-W 21.97'
17" B. oak S-28°-E 18.48'



Signed by Richard Hays
Surveyor's Michigan License No. 25847

Date: May 7 1996
FORM APPROVED BY MICHIGAN STATE BOARD OF PROFESSIONAL SURVEYORS, JAN. 28, 1971
REVISED MAY 14, 1975