

1993

LAND CORNER RECORDATION CERTIFICATE
Filing Requirement of Act 74, Mich. P.A. 1970

COMMISSION

For corners in

Manistee (County)

Located In: Corner Code -#

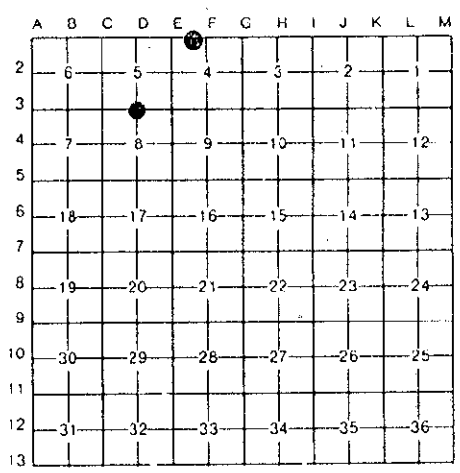
Table with columns for survey type (Public Land Survey, Property Controlling, etc.), section/quarter, township/range, and corner code. Includes handwritten 'D-3' and '4-1-2'.

REGISTER'S OFFICE
MANISTEE COUNTY
# 93-362 HT 11 35 A.M.
MAY 24 1993
[Signature]
REGISTER OF DEEDS

Register of Deeds Stamp & File Number

4. Lot No. Recorded Plat
5. Private Claims

Norman C. Caldwell September 19 92
I, Norman C. Caldwell, in a field survey on
do hereby certify that under requirements of P.A. 74, Michigan P.A. of 1970, the corner points mentioned
in lines 1 and 2 above were in conformance with regulations and rules therefore as required in the
current manual of survey instructions of the United States Department of the Interior, Bureau of Land
Management or by a decree of a Court of Law and/or that the corner points mentioned in lines 3, 4 and 5
above were in conformance with the rules of the Michigan Board of Land Surveyors or by a Decree of a
Court of Law; established, re-established, monumented, re-monumented, recovered, found as
expressed below:



NOTE: Not more than 4 corners, all in the same town and range, may be recorded on this certificate.

A. Description of original monument and accessories and/or subsequent restoration:

D-3 Post placed by Orange Risdon, 1847. 4-1-2 Oct. 11, 1937 J. Brink intersected East line of Indian Reserve in River, no monument or references established.

Position established by J. Brink May 1837 in running East line of Indian Reserve, position fall in river, no monument or references marked.

B. Description of corner evidence found and/or method applied in restoring or reestablishing corner:

D-3 1/4 cor., Sec. 5 & 8, T21N-R13W 4-1-2 East Line I.R. & Township Line T21N-R13W

Survey by Fargo Eng. Co. July & August 1909. Fnd. stump of U.S. pine and remains of U.S. Hemlock Set conventional iron lime monument North 0.01 ch. (0.66') 10" Hemlock (O.B.T.) South 0.05 ch. (3.3') 12" W. Pine (O.B.T.)

Survey by Richard L. Hays recorded in Liber 1, page 742 indicates a position for this corner and was established using improper procedures and is not utilized in the course of this survey.

Unrecorded survey by Anthony M. Slawinski, March 1970 indicates a position for this corner.

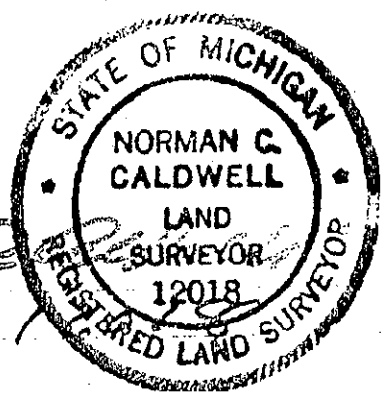
C. Description of monument for corner and accessories established to perpetuate locating the position of the corner:

D-3 1/4 cor., Sec. 5 & 8, T21N-R13W 4-1-2 East Line I.R. & Township Line T21N-R13W

Position falls in back waters of Tippy Dam. The calc. position is accepted as a careful and faithful perpetuation of the position of the original corner.

Position falls in back waters of Tippy Dam. No monument placed. Utilized record position by orig. gov't. survey and Fargo Eng. Co by single proportion between record position of NE cor. Sec. 6, T21N-R13W and recovered orig. NE cor. Sec. 4, T21N-R13W and is accepted as a careful and faithful reestablishment of the position of the original corner. East 340.42' 1/4 Cor., Sec.4, T21N-R13W, & Sec.33, T22N-R13W

Corner D-3 3/4 Cor. 5 & 8, T21N-R13W, Sec. 5 & 8, T21N-R13W, & Sec. 33, T22N-R13W, as shown on plat of 1909, as recorded Dec. 11, 1909.



Signed by Surveyor's Michigan License No.

Date 12 JAN 93