

1993

LAND CORNER RECORDATION CERTIFICATE  
Filing Requirement of Act 74, Mich. P.A. 1970

For corners in  
Manistee

(County)

Located In:

Corner Code #

1. Public Land Survey

T 21N R 13W

G-8, G-12

T R

T R

T R

T R

2. Property Controlling  
in Section

S T R

S T R

3. Miscellaneous  
Property in Sec.

S T R

S T R

COMMISSION

REGISTER'S OFFICE  
MANISTEE COUNTY

# 93-299 AT 11:36 A.M.

MAY 12 1993

*Norman C. Caldwell*  
REGISTER OF DEEDS

Register of Deeds Stamp & File Number

4. Lot No. \_\_\_\_\_ Recorded Plat \_\_\_\_\_

5. Private Claims \_\_\_\_\_

Norman C. Caldwell

September 19 92

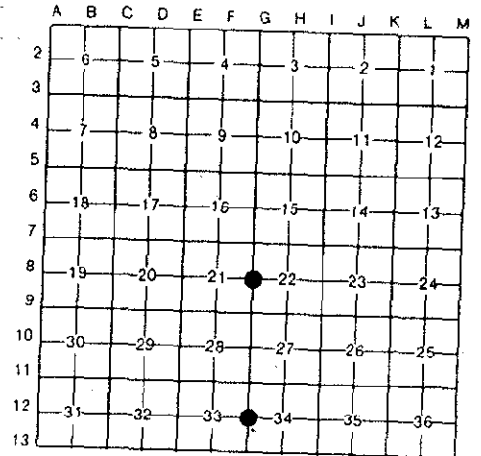
I, Norman C. Caldwell, in a field survey on September 19 92, do hereby certify that under requirements of P.A. 74, Michigan P.A. of 1970, the corner points mentioned in lines 1 and 2 above were in conformance with regulations and rules therefore as required in the current manual of survey instructions of the United States Department of the Interior, Bureau of Land Management or by a decree of a Court of Law and/or that the corner points mentioned in lines 3, 4 and 5 above were in conformance with the rules of the Michigan Board of Land Surveyors or by a Decree of a Court of Law; established, re-established, monumented, re-monumented, recovered, found as expressed below:

NOTE: Not more than 4 corners, all in the same town and range, may be recorded on this certificate.

A. Description of original monument and accessories and/or subsequent restoration:

G-8 Post Placed by John Brink, 1839  
S63°E 21 lks. (13.86') 8" P. Pine  
S29°W 18 lks. (11.88') 9" P. Pine

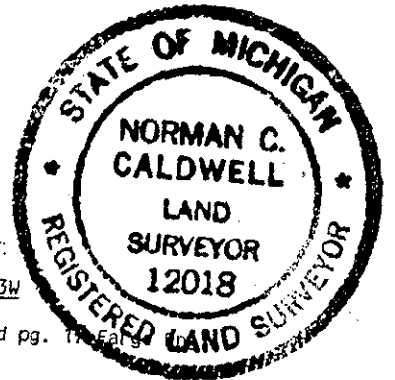
G-12 10" W. Pine cor. tree by John Brink, 1839



B. Description of corner evidence found and/or method applied in restoring or reestablishing corner:

G-8 1/4 cor., Sec. 21 & 22, T21N-R13W  
Survey by Fargo Eng. Co. in July & Aug. 1909  
Fnd. stump of U.S. Y. Pine witness  
established/accepted position and set a  
typical "Fargo Monument"  
N67°W 101' 6" B. Oak  
S42½°E 65½' 6" B. Oak

G-12 1/4 cor., Sec. 33 & 34, T21N-R13W  
Manistee County Surveyors record pg. 11  
Co. W.O.W. July 1930  
No Monument Given  
N12°E 23.5 10" W. P. Stump  
Remark: Probable Stump of U.S. B.T.



Manistee County Surveyors record pg. 11  
E.W.M. July 14, 1914, Fargo Eng. Co.  
N67°W 101' 6" B. Oak  
S42½°E 65½' 6" B. Oak  
No Monument Given  
"Found Stump of U.S. Pine"

U.S. Forest Service land cor. record card  
Robert Griffin searched for the corner in  
1963, and found nothing. Presumed it was a lost cor.

U.S. Forest Service land cor. record card  
Robert Griffin searched for iron in 1963,  
and found nothing. Presumed cor. to be lost

C. Description of monument for corner and accessories established to perpetuate locating the position of the corner:

G-8 1/4 cor., Sec. 21 & 22, T21N-R13W  
At midpt. on line.  
Placed 2" iron pipe w/brass cap and is  
accepted as a careful and faithful  
reestablishment of the position of the  
original corner.  
N63°E 29.15' 6" Quad. B. Cherry  
S45°E 44.58' 7" W. Oak  
S48°W 10.65' 8" W. Oak  
N52°W 37.45' 6" W. Oak  
S86°E 77.90' 3/4" Pipe #12018  
South 1.0' Carsonite Witness Post

G-12 1/4 cor., Sec. 33 & 34, T21N-R13W  
At midpt. on line.  
Placed 2" iron pipe w/brass cap and is  
accepted as a careful and faithful  
reestablishment of the position of the  
original corner.  
N75°E 45.57' 5" W. Oak  
S01°W 55.58' 6" W. Pine  
S42°W 48.77' 6" Trip. W. Oak  
N22°W 37.35' 16" B. Oak  
S23°E 119.15' 3/4" Pipe #12018  
South 1.0' Carsonite Witness Post

Corner 5 - 25-12 ratified by the Manistee  
County Peer Group pursuant to P.A. 123 of  
1915, as amended by P.A. 945 of 1990, as  
amended. Date of Peer Review: APR 25 1993

Signed by *Norman C. Caldwell*  
Surveyor's Michigan License No. 12018

Date 12 JAN 93