

1993

LAND CORNER RECORDATION CERTIFICATE
Filing Requirement of Act 74, Mich. P.A. 1970

For corners in
Manistee

(County)

Located In:

Corner Code =#

1. Public Land Survey	T	21N	R	13W	J-11	
	T		R			
	T		R			
	T		R			
2. Property Controlling in Section	S	25	T	21N	R 13W	25-3
	S		T		R	
3. Miscellaneous Property in Sec.	S		T		R	
	S		T		R	

COMMISSION

REGISTER'S OFFICE
MANISTEE COUNTY

93-265 AT 10:40 A.M.

MAY - 7 1993

Fenny O. Pears
REGISTER OF DEEDS

Register of Deeds Stamp & File Number

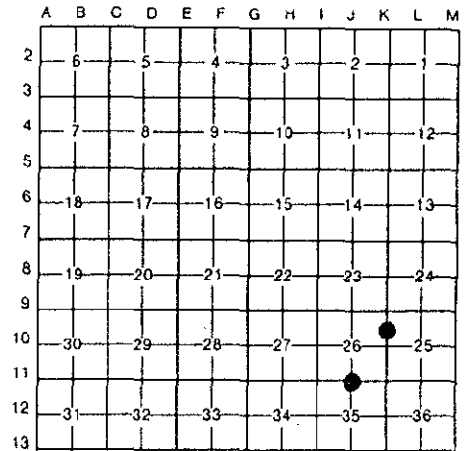
4. Lot No. _____, Recorded Plat _____
5. Private Claims _____

I, Norman C. Caldwell, in a field survey on September, 1992, do hereby certify that under requirements of P.A. 74, Michigan P.A. of 1970, the corner points mentioned in lines 1 and 2 above were in conformance with regulations and rules therefore as required in the current manual of survey instructions of the United States Department of the Interior, Bureau of Land Management or by a decree of a Court of Law and/or that the corner points mentioned in lines 3, 4 and 5 above were in conformance with the rules of the Michigan Board of Land Surveyors or by a Decree of a Court of Law; established, re-established, monumented, re-monumented, recovered, found as expressed below:

NOTE: Not more than 4 corners, all in the same town and range, may be recorded on this certificate.

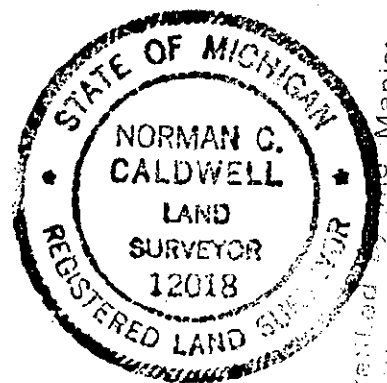
A. Description of original monument and accessories and/or subsequent restoration:

J-11 Post Placed by J. Brink, 1838 25-3 This position not established by original government survey.
12" W. Pine N79°E 355 lks. (234.30')



B. Description of corner evidence found and/or method applied in restoring or reestablishing corner:

J-11 1/4 cor., Sec. 26 & 35, T21N-R13W 25-3 N 1/16 cor., Sec. 25 & 26, T21N-R13W
Clinton Cole L.77, pg.43 No Subsequent Record
Found dock spike.
S14°E 30.8' 24" Oak stump (O.B.T.)
N64°W 120.32' P. Pole
S32°W 62.62' 8" W. Oak
S72°E 105.61' P. Pole



Corner J-11 re-established by Manistee County Peer Group pursuant to P.A. 123 of 1915, as amended by P.A. 845 of 1990, as amended. Date of Peer Review: APR 8 1993

C. Description of monument for corner and accessories established to perpetuate locating the position of the corner:

J-11 1/4 cor., Sec. 26 & 35, T21N-R13W 25-3 N 1/16 cor., Sec. 25 & 26, T21N-R13W
Placed 5" x 5" x 36" conc. post w/brass tablet .5' below road surface in mon. box per record surveys and is accepted as the best available evidence of the position of the original corner.
S20°W 44.19' 5" W. Pine
S59°E 72.34' 12" W. Oak
N31°W 114.12' 8" W. Oak
N35°E 74.35' 6" W. Oak
South 33.00' Carsonite Witness Post
Placed 5/8" iron rod w/alum. cap. This position not established by original government survey. This monument is accepted as a careful and faithful determination of the position of the corner.
S62°E 56.87' 7" Black Oak
N12°W 60.71' 4" Red Pine
S66°W 46.24' 4" Red Pine
S27°W 100.96' 4" Red Pine
West 1.0' Carsonite Witness Post

Signed by *Norman C. Caldwell*

Date 12 JAN 93

Surveyor's Michigan License No. 12018